

92
463
113
V.2
Ent.

A I D
TO THE
IDENTIFICATION
OF
I N S E C T S .

EDITED BY
CHARLES OWEN WATERHOUSE.
///
LITHOGRAPHS BY
EDWIN WILSON and MAUD HORMAN-FISHER.

VOL. II.

c
199645

LONDON :
E. W. JANSON, 35, LITTLE RUSSELL STREET, W.C.

1882-90

London :

PRINTED BY ARLISS ANDREWS,
MUSEUM WORKS,
MUSEUM STREET, BLOOMSBURY, W.C.

PREFACE.

I REGRET that from change of circumstances the publication of 'Aid' must, at least for the present, be discontinued. In my second volume I have as far as possible adhered to my original design. After part 15, however, acting on the suggestion of some of my subscribers, I introduced the system of figuring more than one species on each plate, by which means I was able to give representations of twenty-five species for a subscription up till that time paid for sixteen figures.

Although this plan certainly has its advantages, it increased very greatly my labours as editor, a circumstance which would not in itself have prevented me carrying on the work, but which, when combined with others, has had considerable weight in deciding me to discontinue the publication.

I originally undertook the work on account of the great need which I felt of good figures. Thousands of species are annually described, but few descriptions are accompanied even by a wood-cut, and the difficulty of determining insects without such help is only too well known. I felt therefore that I could scarcely do the cause of systematic entomology greater service than by publishing a work of this kind, and it is with the greatest reluctance that I discontinue it. That I do not believe species can (except in a few cases) be determined with certainty from a figure

only is testified by the title of my book ; a drawing, however, is a great help, and it not only assists in the identification of the species figured, but provides a definite object with which describers may compare new species.

Of the 416 species figured in this second volume, 375 are drawn from actual type specimens ; 29 are from specimens kindly sent to me by Captain Broun from New Zealand, and are mostly species described by him ; and the remaining twelve are from various sources, but are all from specimens the correct determination of which cannot, I think, be questioned.

I tender my best thanks to those Entomologists who have placed their specimens at my disposal, particularly to Messrs. H. W. Bates, W. L. Distant, H. Druce, O. Janson, F. Moore, F. P. Pascoe, the Rev. H. S. Gorham, Captain Broun and Miss Sharpe.

August 16th, 1890.

SYSTEMATIC INDEX.

COLEOPTERA.

GEODEPHAGA.

Carabidæ.

				PART.	PLATE.
Carabus Gehini, Fairm.	Japan	16	125
Damaster capito, Lewis	Japan	16	125
Cychrus convexus, Morawitz	Japan	16	125
Cymindis damio, Bates	Japan	16	125
Mouhotia Batesi, Lewis	Burmah	16	125
„ convexus, Lewis...	Laos	17	129
Lecanomerus fuliginosus, Broun	New Zealand	19	138
Anchomenus Batesi, Bröun	New Zealand	22	149
„ parabilis, Broun	New Zealand	22	149
Calathus (?) deformipes, Broun	New Zealand	22	149
Tropopterus patulus, Broun	New Zealand	28	174
Pselaphanax setosus, Walker	Ceylon	15	120
Bembidium latiusculum, Broun	New Zealand	28	174

BRACHELYTRA.

Trygæus princeps, Sharp...	Japan	18	133
----------------------------	-----	-----	-------	----	-----

NECROPHAGA.

Pselaphidæ.

Batrissus antennatus, Weise	Japan	21	146
„ pilosus, Sharp	Japan	21	146
Triomicrus simplex, Sharp	Japan	21	146
Bythinus glabratus, Rye	England	21	146
Euplectus trisulcicollis, Broun	New Zealand	21	146
Lasinus spinosus, Sharp	Japan	21	146
Pselaphus Lewisii, Sharp	Japan	21	146

			PART.	PLATE.
Diartiger fossulatus, Sharp	Japan	21 146
„ spinipes, Sharp	Japan	21 146
Silphidæ.				
Nodinus leucofasciatus, Lewis	Japan	18 133
Scaphidiidæ.				
Scaphisoma concinna, Broun	New Zealand	19 138
Histeridæ.				
Phylloscelis orbicularis, Olliff	Borneo	18 134
Syntelia histeroides, Lewis	Japan	18 133
Nitidulidæ.				
Lasiodactylus notabilis, Olliff	Ceram	18 134
Colydiidæ.				
Gempylodes superans, Pascoe	Siam	13 101
Paraphylax squamiger, Broun	New Zealand	23 153
Ulonotus aberrans, Broun	New Zealand	22 149
Narcisa lynceus, Olliff	Borneo	18 134
Peltidæ.				
Ancyrona Pryeri, Olliff	Borneo	18 134
Prometopia rhombus, Olliff	Borneo	18 134
Cucujidæ.				
Brontes pleuralis, Sharp	New Zealand	21 145
Psammœcus hirsutus, Olliff	Borneo	18 134
Platycotylus inusitatus, Olliff	Borneo	18 134
Inopeplus borneensis, Olliff	Borneo	18 134
Dryocora Howitti, Pascoe	New Zealand	13 102

PECTINICORNIA.

Lucanidæ.

			PART.	PLATE.
Lucanus laminifer, Waterh.	Assam	31 185
Auxicerus platyceps, Waterh.	Peru	30 181

LAMELLICORNIA.

Cetoniidæ

Mycteristes telifer, Bates	Kini Balu	31 186
Prigenia viridiaurata, Bates	Kini Balu	31 185
Heterorhina malayana, Wallace...	Penang	23 153
Eudicella Trimeni, O. Janson	Natal	30 182
Lomaptera Du Boulayi, Thomson	E. Australia	20 144
Xenoloba speciosa, Bates	Kini Balu	31 185
Plectrone spathulifera, Bates	Kini Balu	31 185
„ auripes, Westwood	Kini Balu	31 185
„ viridipes, Bates	Kini Balu	31 185
Chalcothea pomacea, Bates	Kini Balu	31 185
„ planiuscula, Bates	Kini Balu	31 185
Glyptothea Whiteheadi, Bates	Kini Balu	31 186
Tæniodera ditissima, Bates	Kini Balu	31 185
Gnathocera hyacinthina, O. Janson	E. Africa	30 182
Celidota splendens, Waterh.	Madagascar	29 180
Stenotarsia punctiventris, Waterh	Madagascar	30 182
Simorrhina Staudingeri, Kraatz	Africa	30 182
Charadronota curvata, O. Janson	W. Africa	30 182
Macroma Oberthüri, O. Janson	Thibet	30 182

Trichiidæ.

Polyplastus assarius, O. Janson	W. Africa	30 182
---------------------------------	-----	-----	-----------	--------

SERRICORNIA.

Buprestidæ.

Sternocera syriaca, Saunders	Syria	15 121
Chrysodema Lambii, Saunders	Penang	23 153

			PART.	PLATE.
Armenosoma atrum, Waterh.	...	Cape of Good Hope	30	181
Corœbus Pascoei, Saunders	...	Penang	23	153
Stigmodera tibialis, Waterh.	...	Australia	14	111
Maschalix latipennis, Waterh.	...	Queensland	30	181
Callipyndax cupreiventris, Waterh.	...	Brazil	30	181

Eucnemidæ.

Hylotastes terminatus, Pascoe	...	Borneo	13	103
-------------------------------	-----	--------	----	-----

Elateridæ.

Psorochroa granulata, Broun	...	New Zealand	27	171
Melanus sculptus, Broun	...	New Zealand	28	174

MALACODERMATA.

Rhipidoceridæ.

Callirhipis longicornis, Waterh.	...	Andaman Is.	21	145
----------------------------------	-----	-------------	----	-----

Drilidæ.

Diplocladon Hasseltii, Gorham	...	Sumatra	26	167
-------------------------------	-----	---------	----	-----

Cleridæ.

Hemitrachys bizonatus, Gorham	...	Singapore	16	126
Paratillus basalis, Gorham	...	Moreton Bay	17	129
Olesterus gracilis, Gorham	...	Australia	15	123
Phymatophaea testacea, Broun	...	New Zealand	28	174
„ ignea, Broun	...	New Zealand	28	174
Omadius abscissus, Gorham	...	Batchian	16	126
„ vespiformis, Gorham	...	Philippine Is.	16	126
Tenerus flavicollis, Gorham	...	Laos	15	122
Ichnea mitella, Gorham	...	Amazons	16	126
Pelonium ruficolle, Gorham	...	Parana	16	126
„ Badeni, Gorham	...	Brazil	16	126
„ extraneum, Gorham	...	Laos	16	126

Bostrichidæ				PART.	PLATE.
<i>Cænophrada anobioides</i> , Waterhouse	...	India		30	181

Cupesidæ.

<i>Cupes clathratus</i> , Solsky	...	Japan		18	133
----------------------------------	-----	-------	--	----	-----

HETEROMERA.

Tenebrionidæ.

<i>Chærodes lætus</i> , Broun	...	New Zealand	22	149
<i>Eulytus nodipennis</i> , Waterhouse	...	E. Africa	14	109
<i>Gnesis helopioides</i> , Pascoe	...	Mantchuria	24	158
<i>Arthropus Brouni</i> , Sharp	...	New Zealand	21	145
<i>Diopethes arachnoides</i> , Pascoe	...	Bahia	24	158
<i>Phymæus pustulosus</i> , Pascoe	...	Ceylon	24	158
<i>Ænomia femorata</i> , Pascoe	...	Para	24	158
<i>Immedia occulta</i> , Pascoe	...	Bahia	24	158
<i>Alymon prolatus</i> , Pascoe	...	Natal	24	158
<i>Diestica viridipennis</i> , Pascoe	...	Amazons	24	158
<i>Calydonis refulgens</i> , Pascoe	...	Para	24	158

Cistelidæ.

<i>Chromomæa picta</i> , Pascoe	...	Queensland	24	158
<i>Prostenus militaris</i> , Pascoe	...	Ega	17	129

Meloidæ.

<i>Meloëtaphlus fuscus</i> , Waterhouse	...	Peru	25	161
---	-----	------	----	-----

Ædemeridæ.

<i>Thelyphassa diaphana</i> , Pascoe	...	New Zealand	18	133
--------------------------------------	-----	-------------	----	-----

RHYNCHOPHORA.

Brenthidæ.

<i>Higonius crux</i> , Olliff	...	Andaman Is.	21	145
„ <i>Poweri</i> , Lewis	...	Penang	21	145

			Anthribidæ.		PART.	PLATE.
Tophoderes annulatus, Waterhouse	Madagascar	27	171	
Diastatropis olivaceus, Waterhouse	Madagascar	27	171	
Mecocerus sulphureus, Waterhouse	Andaman Is.	27	171	
Doticus palmaris, Pascoe	Queensland	13	104	
Exilis spectabilis, Broun	New Zealand	19	138	

			Curculionidæ.		
Ancistropterus prasinus, Broun	New Zealand	27	171
Stephanorhynchus crassus, Broun	New Zealand	19	138
Pactola variabilis, Pascoe	New Zealand	17	129
Pachyura rubicunda, Broun	New Zealand	19	138
Lysizone alternata, Pascoe	Nicol Bay	24	157
Siteutes cæruleatus, Pascoe	New Guinea	25	161
Apirocalus cornutus, Pascoe	Fiji	17	129
Novitas nigrans, Broun	New Zealand	19	138
Agrilochilus prolixus, Broun	New Zealand	21	145
Canthorhynchus bellus, Broun	New Zealand	21	145
Lipothyrea chloris, Pascoe	E. Australia	24	157
Amphialus turgidus, Pascoe	Ceylon	24	157
Pachydon linearis, Broun	New Zealand	28	174
Alcides trifidus, Pascoe	Cambodia	25	161
„ crassus, Pascoe	Andaman Is.	25	161
Crisius variegatus, Broun	New Zealand	21	145
Paromalina vestita, Broun	New Zealand	28	174
Sphenophorus Cumingii, Waterhouse	Philippine Is.	30	181

LONGICORNIA.

			Prionidæ.		
Tithoes Palinii, Hope	Sierra Leone	26	167

Cerambycidæ.

Opsamates dimidiatus, Waterh.	Madagascar	27	171
„ purpureipennis, Waterh.	Madagascar	27	171

			PART.	PLATE.
<i>Demelius semirugosus</i> , Waterh.	Queensland	25	161	
<i>Phoracantha hospita</i> , Pascoe	Queensland	25	161	
<i>Trypocharia Mastersii</i> , Pascoe	Melbourne	25	161	
<i>Thoris eburifera</i> , Pascoe	E. Australia	25	161	
<i>Tritocosmia Digglesii</i> , Pascoe	Queensland	31	188	
<i>Hesthesis acutipennis</i> , Pascoe	New South Wales	31	188	
<i>Erythresthes Bowringii</i> , Pascoe	Hong Kong	31	188	
<i>Promeces viridis</i> , Pascoe	Natal	29	180	
<i>Euporus ignicollis</i> , Pascoe... ..	Natal	29	180	
<i>Polyzonus scalaris</i> , Pascoe	Grahamstown	29	180	
<i>Clytus Balyi</i> , Pascoe	India	18	133	
„ <i>podagricus</i> , White	St. Domingo	22	149	
„ <i>protogenes</i> , Newman	Philippine Is.	22	149	
<i>Chlidones lineolatus</i> , Waterh.	Madagascar	29	180	
<i>Stenaspis plagiatus</i> , Waterh.	Guatemala	27	171	
<i>Anastetha raripila</i> , Pascoe	Rockhampton	31	188	

Lamiidæ.

<i>Tmesisternus lotor</i> , Pascoe	Batchian	24	157
<i>Anexodus aquilus</i> , Pascoe	Borneo	28	175
<i>Periaptores testator</i> , Pascoe	New Guinea	14	110
<i>Monohammus x-fulvum</i> , Bates	Gaboon	27	170
„ <i>pictor</i> , Bates	Mt. Cameroons	27	170
<i>Batomena multispinis</i> , Bates	Mt. Cameroons	27	170
<i>Tricholamia plagiata</i> , Bates	Mt. Cameroons	27	170
<i>Melanopolia farinosa</i> , Bates	Gaboon	27	170
<i>Noserocera tuberosa</i> , Bates	Mt. Cameroons	27	170
<i>Planodes luctuosus</i> , Pascoe	Ceram	31	188
<i>Agnia eximia</i> , Pascoe	Molucca	23	154
<i>Megacriodes Forbesii</i> , Waterh.	Sumatra	22	149
<i>Symphyletes torquatus</i> , Pascoe	Queensland	23	154
<i>Cereopsius tricinctus</i> , Pascoe	Batchian	23	154

			PART.	PLATE.
<i>Nynenon larvatus</i> , Pascoe	Andaman Is.	23 154
<i>Cylindrepomus lætus</i> , Pascoe	Singapore	28 175
„ <i>grammicus</i> , Pascoe	Waigiou	28 175
<i>Olenecamptus optatus</i> , Pascoe	Penang	28 175
<i>Chreostes Oberthüri</i> , Pascoe	Zambesi	28 175
<i>Thylactus longipennis</i> , Pascoe	W. Africa	28 175
<i>Pelargoderus meleagris</i> , Pascoe	Tondano	29 180
<i>Tanylamia melanurus</i> , Pascoe	Madagascar	28 175
<i>Penthea pardalis</i> , Newman	S. Australia	20 144
„ <i>scenica</i> , Pascoe	Australia	23 154
<i>Rhytiphora Dallasii</i> , Pascoe	W. Australia	24 157
„ <i>argus</i> , Pascoe	Australia	23 154
„ <i>caprina</i> , Newman	E. Australia	20 144
<i>Dioristus albolateralis</i> , Waterh.	Madagascar	24 157
<i>Biasmia guttata</i> , Pascoe	Natal	31 188
<i>Ærenea trigona</i> , Pascoe	Brazil	31 188
<i>Isse punctata</i> , Pascoe	Natal	31 188
<i>Glenida suffusa</i> , Gahan	China	30 181
„ <i>cyanipennis</i> , Gahan	China	30 181
<i>Glenea adelia</i> , Pascoe	Sarawak	17 130
„ <i>coris</i> , Pascoe	Singapore	17 130
„ <i>detrita</i> , Pascoe	Macassar	17 130
„ <i>eclectica</i> , Pascoe	Sarawak	17 130
„ <i>concinata</i> , Pascoe	Menado	17 130
„ <i>honora</i> , Pascoe	Penang	17 130
„ <i>tringaria</i> , Pascoe	Menado	17 130
„ <i>extensa</i> , Pascoe	Singapore	17 130
<i>Blepisanis Bohemani</i> , Pascoe	Natal	29 180
<i>Ites plagiatus</i> , Waterh.	Ecuador	24 157
<i>Chrysaperda collaris</i> , Pascoe	Ecuador	31 188
<i>Calliphenges cuprascens</i> , Waterh.	Ecuador	22 149

PHYTOPHAGA.

Eumolpidæ.

PART. PLATE.

Peniticus robustus, Broun	New Zealand	19	138
---------------------------	-----	-----	-------------	----	-----

Chrysomelidæ.

Doryphora miliaris, Jacoby	Columbia	17	129
„ insulans, Jacoby	Peru	17	129
„ fulvicollis, Jacoby	Peru	17	129
„ fulvonotata, Jacoby	Peru	17	129

Halticidæ.

Notozona elegans, Clark	Mexico	26	167
„ humilis, Clark	Mexico	26	167
„ rufofusca, Clark	Honduras	26	167
„ sparsa, Clark	Mexico	26	167

Galerucidæ.

Rhopalotoma tuberculata, Clark	New Grenada	29	180
Adoxia vulgaris, Broun	New Zealand	23	153

Hispidæ.

Gonophora Wallacei, Baly	Borneo	23	153
--------------------------	-----	-----	--------	----	-----

Cassididæ.

Mesomphalia latissima, Baly	Ecuador	24	157
-----------------------------	-----	-----	---------	----	-----

PSEUDOTRIMERA.

Endomychidæ.

Monocoryna decempunctata, Gorham	Sumatra	26	167
----------------------------------	-----	-----	---------	----	-----

Helotidæ.

Helota cereopunctata, Lewis	Japan	18	133
„ gemmata, Gorham	Japan	18	133

				PART.	PLATE.
<i>Helota africana</i> , Olliff	Angola	23 153
„ <i>semifulva</i> , Ritsema	Java	23 153
„ <i>lævigata</i> , Oberthür	Darjeeling	20 144
„ <i>pusilla</i> , Oberthür	Darjeeling	20 144

HYMENOPTERA

Tenthredinidæ

<i>Athalia maritima</i> , Kirby	Greece	23 156
<i>Hylotoma fumipennis</i> , Smith	Punjab	23 156
<i>Allantus simillimus</i> , Smith	Punjab	23 156
„ <i>terminalis</i> , Smith	Kashmir	23 156
„ <i>providus</i> , Smith	Punjab	23 156
„ <i>multicolor</i> , Smith	Punjab	23 156
<i>Macrophya opposita</i> , Smith	Kashmir	23 156
<i>Tenthredo simulata</i> , Smith	Kashmir	23 156

Chalcididæ.

<i>Leucospis coxalis</i> , Kirby	Buenos Ayres	27 169
----------------------------------	-----	-----	-----	--------------	--------

Ichneumonidæ.

<i>Paniscus quadrilineatus</i> , Smith	Yarkand	25 162
<i>Ophion dentatus</i> , Smith	Kashmir	25 162
„ <i>albopictus</i> , Smith	Yarkand	25 162
<i>Campoplex longipes</i> , Smith	Kashmir	25 162
<i>Cryptus insidiator</i> , Smith	Kashmir	25 162
<i>Ichneumon bipustulatus</i> , Smith	Murree	27 169
[<i>Pompilus</i>] <i>divisus</i> , Smith	Sind Valley	27 169
[<i>Priocnemis</i>] <i>Pascoei</i> , Kirby	New Zealand	19 137

Mutillidæ.

<i>Mutilla aurifex</i> , Smith	Bombay	27 169
„ <i>rufitarsis</i> , Smith	India	27 169

Pompilidæ.

				PART. PLATE.	
Priocnemis	Huttoni, Kirby	New Zealand	19 137
„	maculipennis, Smith	New Zealand	19 137
„	Wakefieldii, Kirby	New Zealand	19 137
„	xenos, Kirby	New Zealand	19 137
„	conformis, Smith	New Zealand	19 137
„	monachus, Smith	New Zealand	19 137

Apidæ.

Megachile	fulva, Smith	Yarkand	27 169
-----------	--------------	-----	-----	---------	--------

LEPIDOPTERA.**Nymphalidæ.**

Erebia	scoparia, Butler	Japan	13 105
Ypthima	apicalis, Moore	Deyra Doon	29 179
„	mahratta, Moore	Deccan	29 179
„	Horsfieldii, Moore	Java	29 179
„	howra, Moore	Calcutta	29 179
„	kasmira, Moore	Cashmir	29 179
„	avanta, Moore	Cashmir	29 179
„	newara, Moore	Nepal	29 179
„	nikæa, Moore	N.W. Himalaya	29 179
Vanessa	lunigera, Butler	Japan	13 106
„	Thomsonii, Butler	Brit. Honduras	29 178
Cyrestis	Whitmei, Butler	Lifu	28 176
„	irmæ, Forbes	Sumatra	28 176
„	achates, Butler	Mysol	28 176
„	sericens, Butler	Borneo	28 176
Pseudacræa	Colvillei, Butler	Natal	22 150
Planema	Jacksoni, E. M. Sharpe	E. Africa	31 189
Apatura	bhavana, Moore	N.E. Bengal	16 127
Tenaris	buruensis, Forbes	Borneo	26 166

Lycænidæ.

			PART. PLATE.	
Lampides Goodenovii, Butler	New Hebrides	26 165
Lycæna iburiensis, Butler	Japan	13 108
Thecla orsedice, Butler	Japan	13 107
„ ibara, Butler	Japan	14 113
„ regina, Butler	Japan	14 114
„ signata, Butler	Japan	14 114
„ Butleri, Fenton	Japan	14 115
Strymon Fentoni, Butler	Japan	14 115
Theritas Oakesii, Butler	Colombia	25 163
Aphnæus tigrinus, Moore	Bengal	25 163
„ orcus, Drury	W. Africa	25 163
„ himalayana, Moore	Nepal	25 163
Drupadia Lisias, Fabricius...	Pulo Condor	26 165
Satadra canaraica, Moore	S. India	26 165
Darasana newara, Moore	Nepal	26 165

Pieridæ.

Ixias satadra, Moore	Simla	16 127
Idmais maimuna, Kirby	Africa	20 143
„ eris, Klug	Abyssinia	20 143
Teracolus bifasciatus, E. M. Sharpe	E. Africa	31 189
„ Jacksoni, E. M. Sharpe	E. Africa	31 189
„ Eliza, E. M. Sharpe	E. Africa	31 189
Pinacopteryx nigropunctata, E. M. Sharpe	E. Africa	31 189

Papilionidæ.

Papilio tibullus, Kirby	Zanzibar	19 139
„ albolineatus, Forbes	Borneo	26 166

Ægeriidæ.

Melitta gigantea, Moore	Masuri	17 131
-------------------------	-----	-----	--------	--------

Sphingidæ.			PART.	PLATE.
Macroglossum cynniris, Guérin	Sylhet	19 140
Enyo excisa, Walker	Pt. Natal	19 140
Aleuron Butleri, Kirby	W. Indies	19 140
Chærocampa andamanensis, Kirby	Andaman Is.	20 141
„ margarita, Kirby	Queensland	19 140
Daphnis torena, Druce	Fiji Is.	18 136
Ambulyx argentata, Druce	Cochin China	18 136
„ Elwesi, Druce	Darjeeling	18 136
Nephele charoba, Kirby	Madagascar	20 141
„ infernalis, Kirby	Ashantee	20 141
Diludia bethia, Kirby	Queensland	19 140
Acherontia sculda, Kirby	Borneo	20 141
Triptogon rectilinea, Moore	N. India	19 140

Agaristidæ.

Cocytia Veitchii, Butler	Batchian	23 155
Ægocera tricolor, Druce	E. Africa	23 155
Eusemia grandis, Druce	W. Africa	23 155
„ Hornimani, Druce	W. Africa	23 155
„ funebris, Moore	Darjeeling	16 127
„ medeba, Druce	Old Calabar	27 172
„ opheltes, Druce	N. Burmah	27 172
Seudyra venosa, Moore	Darjeeling	17 131
Campylotes Atkinsoni, Moore	Darjeeling	14 112

Chalcosiidæ.

Chalcosia nympha, Moore	Hainan	17 131
Amesia hyala, Druce	Darjeeling	27 172
Eterusia shahama, Moore	Darjeeling	16 127
Milionia Güntheri, Butler	Sumatra	30 183
„ pyrozonis, Butler	Tenasserim	30 183
„ latifasciata, Butler	Malacca	30 183

				PART.	PLATE.
Milionia basalis, Walker	Java	30 183
„ Drucei, Butler	Celebes	30 183
„ Snelleni, Butler	Celebes	30 183
Chelura basiflava, Moore	Darjeeling	17 131
Pedophila nemopteridea, Butler	Cape Coast	26 165

Arctiidæ.

Pangora matherana, Moore	Bombay	17 131
Glancyus tricolor, Moore	Darjeeling	17 131

Lithosiidæ.

Bizone rubrifasciata, Druce	N. Celebes	27 172
-----------------------------	-----	-----	-----	------------	--------

Hypsidæ.

Damalis concana, Moore	S. India	17 132
------------------------	-----	-----	-----	----------	--------

Nyctemeridæ.

Aletis Monteironis, Druce	Delagoa Bay	27 172
Nyctemera apicalis, Walker	W. Africa	29 17 ⁸

Callidulidæ.

Cleosiris fasciata, Moore	Borneo	22 150
---------------------------	-----	-----	-----	--------	--------

Liparidæ.

Aroa discalis, Walker	Natal	29 178
Redoa cygna, Moore	Bengal	25 164
Chærotricha marginata, Moore	Darjeeling	25 164
Dasychira strigata, Moore	Simla	25 164
Lymantria similis, Moore	Calcutta	25 164

Limacodidæ.

Monema ocellata, Moore	Darjeeling	31 187
------------------------	-----	-----	-----	------------	--------

Psychidæ.

Acousmaticus magnicornis, Butler	Chili	17 132
----------------------------------	-----	-----	-----	-------	--------

				No todontidæ.	PART. PLATE	
Celeia sikkima, Moore	Darjeeling	31	187
„ auritracta, Moore	Darjeeling	31	187
Ceira junctura, Moore	Darjeeling	31	187
Pheosia costalis, Moore	Darjeeling	31	187
Heterocampa maculata, Moore	N.W. Himalaya	31	132	
Lophopteryx argentata, Moore	Darjeeling	17	172	
„ ferruginosa, Moore	Darjeeling	17	132	
Zaranga pannosa, Moore	UmLalla	25	164	
Cerura prasana, Moore	Darjeeling	31	187	

Saturniidæ.

Bunæa aslauga, Kirby	Madagascar	20	142
„ Thomsonii, Kirby	Cameroons	20	142
Attacus Andromeda, Philippi	Valdivia	15	119
Polythysana Edmondsii, Butler	Chili	15	119

Lasiocampidæ.

Eupterote gyra, Swinhoe	Belgaum	29	177
„ diabolica, Swinhoe	Belgaum	29	177
Murlida fraterna, Moore	Darjeeling	28	173
„ lineosa, Walker	Nepal	28	173

Bombycidæ

Ocinara comma, Hutton	Darjeeling	25	164
Andraca trilochoides, Moore	Darjeeling	17	132

Cossidæ.

Cossus cadambæ, Moore	Bengal	31	187
„ tessellata, Moore	Calcutta	31	187

Hepialidæ.

Philanglaus ornatus, Butler	Chili	15	116
-----------------------------	-----	-----	-----	-------	----	-----

			Noctuidæ.	PART.	PLATE.
Gonophora armata, Moore	Khasia Hills	15	117
Tycacona obliqua, Moore	Darjeeling	15	118
Calpe bicolor, Moore	Punjab	22	150
Rusicada diversalis, Moore	Singapore	22	150
Arthisma scissuralis, Moore	Singapore	22	150
Ercheia Zygia, Swinhoe	Poona	29	177
„ Zura, Swinhoe	Bombay	29	177
Briarda conturbata, Walker	Congo	29	178
Remigia congregata, Walker	W. Africa	29	178
Totoxampa cucullata, Moore	N.W. Himalayas	24	160
Callyna semivitta, Moore	Darjeeling	24	160
Sypna complicata, Butler	Madagascar	24	159
„ constellata, Moore	N.W. India	24	159
„ brunnea, Moore	Darjeeling	24	159
„ cyanivitta, Moore	Bengal	24	159
„ Kirbyi, Butler	Darjeeling	24	159
„ prunosa, Moore	Darjeeling	24	159
„ renisigna, Moore	Khasia Hills	24	160
Chalciope disjuncta, Moore	Bengal	24	160
Daddala quadrisignata, Walker	India	24	160
Saraca pannosa, Moore	Darjeeling	28	173

Hypenidæ.

Egnasia castanea, Moore	Khasia Hills	28	173
Rhynchina angulifascia, Moore	N.W. Himalaya	28	173
Hypena umbripennis, Moore	Khasia Hills	28	173
„ ophiusoides, Moore	Khasia Hills	28	173
Mastygophora scopigeralis, Moore	N. E. Bengal	28	173

Geometridæ.

Lagyra megaspila, Moore...	Bengal	22	151
Urapteryx margaritata, Moore	Bengal	30	184

				PART.	PLATE.
<i>Cimicodes cruentaria</i> , Moore	Bengal	22	151
<i>Ennomos viridata</i> , Moore	Bengal	30	184
<i>Geometra vittata</i> , Moore	Bengal	22	151
„ <i>dentisignata</i> , Moore	Darjeeling	22	151
<i>Agathia quinaria</i> , Moore	Bengal	30	184
„ <i>arcuata</i> , Moore	Bengal	30	184
<i>Anisodes similarea</i> , Moore	Bengal	22	151
„ <i>pallivittata</i> , Moore	Bengal	22	151
<i>Arichanna maculata</i> , Moore	Bengal	30	184
<i>Gandaritis flavata</i> , Moore	Bengal	30	184
<i>Cidaria reticulata</i> , Moore	Bengal	30	184

DIPTERA.

<i>Phellus glaucus</i> , Walker	W. Australia	15	124
---------------------------------	-----	-----	--------------	----	-----

RHYNCHOTA

HEMIPTERA.

Pentatomidæ.

<i>Neoglypsus viridicatus</i> , Distant	Japan	18	135
<i>Niarius illuminatus</i> , Distant	Australia	18	135
<i>Cephaloplatys fasciatus</i> , Distant	Queensland	18	135
<i>Tropicoris japonicus</i> , Distant	Japan	18	135
<i>Tesseratoma Hornimani</i> , Distant	Cameroons	18	135

HOMOPTERA.

Cicadidæ.

<i>Zammara columbia</i> , Distant	Colombia	16	128
<i>Pæcilocsaltria leopardina</i> , Distant	E. Africa	16	128
<i>Platypleura inquinata</i> , Distant	E. Africa	16	128
„ <i>signifera</i> , Walker	S. Africa	22	152
„ <i>fulviger</i> a, Walker	Philippine Is.	22	152

				PART.	PLATE.
<i>Tosena splendida</i> , Distant	Assam	21	147		
„ <i>albata</i> , Distant	N.W. Himalaya	21	147		
<i>Carineta obtusa</i> , Walker	Brazil	26	168		
<i>Tympanoterpes elegans</i> , Berg	Argentine Republic	26	168		
„ <i>arechavaletæ</i> , Berg	Uruguay	26	168		
<i>Proarna capistrata</i> , Distant	Buenos Ayres	26	168		
„ <i>pulverea</i> , Olivier	Brazil	26	168		

Cercopidæ.

<i>Tomaspis binotata</i> , Distant	W. Africa	21	148
„ <i>conspicua</i> , Distant	Lake Nyassa	21	148
„ <i>modesta</i> , Distant	W. Africa	21	148
„ <i>Monteironis</i> Distant	Delagoa Bay	21	148
<i>Sphenorhina grandis</i> , Distant	New Grenada	21	148
„ <i>bogotana</i> , Distant	Bogota	22	152

Fulgoridæ.

<i>Aphæna chionæma</i> , Butler	Sumatra	22	152
<i>Clonia lurida</i> , Walker	Ceram	22	152

Flattidæ.

<i>Phromnia rubicunda</i> , Distant	Tenasserim	22	152
--	------------	----	-----

OBSERVATIONS.

PSELAPHANAX SETOSUS. Plate 120.

This species, described by Mr. Walker as one of the *Scydmaenidae*, is of course Carabideous, and as has already been pointed out, is the same as *Selina Westermanni* Mots.

CYCHRUS CONVEXUS. Plate 125.

The figure of this species is taken from an example obtained by Mr. George Lewis in Japan.

HELOTA CEREOPUNCTATA & GEMMATA. Plate 133.

As the sexes of these species differ in the form of the apex of the elytra, outlines of this part in the females are represented in figures 1a, and 2a.

TESSERATOMA HORNIMANI. Plate 135.

I have in figures 1b and 1a represented the larva and pupa of this species on the authority of Mr. Distant, who received them at the same time with the imago.

PRIOCNEMIS PASCOEI. Plate 137.

This insect, as will be seen by a reference to the figure, is an Ichneumon. The specimen from which it was described being in a somewhat bad condition, it was, by an oversight, included by Mr. Kirby among the new *Priocnemides* with which it was received.

NOVITAS NIGRANS. Plate 138.

This species is figured from the unique specimen in Captain Broun's collection. It was most kindly sent for that purpose (with a large number of others) by that gentleman.

MACROGLOSSUM CYNIRIS. Plate 140.

This is figured from a specimen in the Dublin Museum determined by Mr. W. F. Kirby.

ALEURON BUTLERI. Plate 140.

The type specimen from which this species is figured has unfortunately lost the antennæ.

IDMAIS MAIMUNA AND ERIS. Plate 143.

The figures of *I. maimuna* are taken from Mr. Kirby's types in the Dublin Museum. A male example of *I. eris* agreeing perfectly with the figure given by Klug, (Symb. Phys. t. vi. t. 15, 16) was received at the Dublin Museum from Abyssinia, and with it the specimen figured here as the female of this species, and described as such by Mr. Kirby. The specimen had no antennæ.

LOMAPTERA DU BOULAYI. Plate 144.

The specimen figured is in the British Museum, determined from M. Thomson's description by the Editor.

HYLOTOMA FUMIPENNIS. Plate 156.

This species, and many other Hymenoptera, are figured from the type specimens described by the late Mr. F. Smith, in the Second Yarkand Expedition. The specimens appear to have been in spirit, and many of them are in bad condition, which has given the artist much trouble in drawing them. I have figured all the types from this Expedition which were in sufficiently good condition to make a drawing possible.

IMMEDIA OCCULTA. Plate 158.

In order to show the form of the head and thorax, these parts of the insect are represented in the figure in a somewhat unnatural position. The insect is sub-globular, and the head and thorax in their proper position are much deflexed, so that the head is scarcely visible from above.

MELOETYPHLUS FUSCUS. Plate 161.

By an unfortunate oversight this species has been figured with only four instead of five joints to the anterior and intermediate tarsi.

CRYPTUS INSIDIATOR. Plate 162.

See remarks on *Hylotoma*. The side views of the abdomen of this and other species figured on the plate are given in the position in which they are in the types. The abdomen of *Paniscus quadrilineatus* was too much distorted to be figured.

APHNEUS ORCAS. Plate 163.

My figure is taken from a specimen determined by Mr. A. G. Butler, to be referable to this species.

TITHOES PALINI. Plate 167.

Some years ago Prof. Westwood kindly furnished me with a sketch of the type of this species, which is in the University Museum at Oxford. The British Museum example here figured only differs from Prof. Westwood's sketch in being a little smaller. It is quite distinct from *T. yolofofus* with which it is associated in the Munich Catalogue.

DIPLOCLADON HASSELTHI. Plate 167.

The antennæ in this species do not appear so broad as they are drawn in the figure, the branches of the joints being represented as expanded but in a natural position they are much deflexed. The punctuation is much more delicate on the thorax than on the elytra.

POMPILUS DIVISUS. Plate 169.

This species, as will be seen by a reference to the figure, is an *Ichneumon*, but by some unaccountable oversight was described by the late Mr. Smith as a *Pompilus*; it is very closely allied to *I. bipustulatus* which I figure on the same plate.

INDEX TO GENERA.

	PLATE		PLATE		PLATE
Acherontia ...	141	Arthisma ...	150	Celidota ...	180
Acousmaticus ...	132	Arthropus... ..	145	Cephaloplatus ...	135
Adoxia	153	Athalia	156	Cereopsius ...	154
Ægocera	155	Attacus	119	Cerura	187
Ærenea	188	Auxicerus	181	Chærocampa 140,	141
Agathia	184	Batomena	170	Chærodes ...	149
Agnia	154	Batrisus	146	Chærotricha ...	164
Agrilochilus ...	145	Bembidium	174	Chalciope ...	160
Alcides	161	Biasmia	188	Chalcosia ...	131
Aletis	172	Bizone	172	Chalcothea ...	185
Aleuron	140	Blepisanis	180	Charadronota ...	182
Allantus	156	Briarda	178	Chelura	131
Alymon	158	Brontes	145	Chleosiris ...	150
Ambulyx	136	Bunea	142	Chlidones ...	180
Amesia	172	Bythinus	146	Chreostes ...	175
Amphialus	157	Cænophrada	181	Chromomæa ...	158
Anastetha	188	Calathus	149	Chrysaperda ...	188
Anchomenus ...	149	Calipe	150	Chrysodema ...	153
Ancistropterus ...	171	Calliphenges	149	Cidaria	184
Ancyrona	134	Callipyndax	181	Cimicodes ...	151
Andracea	132	Callirhipis	145	Clonia	152
Anexodus	175	Callyna	160	Cocytia	155
Anisodes	151	Calydonis	158	Clytus	133, 149
Apatura	127	Campoplex	162	Coræbus	153
Aphæna	152	Campylotes	112	Cossus	187
Aphnæus	163	Canthorhynchus	145	Crisius	145
Apirocalus	129	Carabus	125	Cryptus	162
Arichanna	184	Carineta	168	Cupes	133
Armenosoma	181	Ceira	187	Cychrus	125
Aroa	178	Celeia	187	Cylindrepomus ..	175

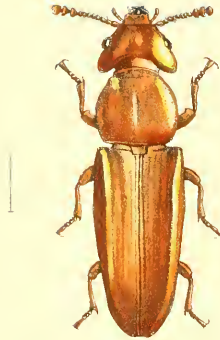
	PLATE		PLATE		PLATE
Cymindis...	... 125	Eupterote	... 177	Lasinus 146
Cyrestis 176	Eusemia	127, 155, 172	Lasiodactylus ...	134
Daadala 160	Exilis 138	Lecanomerus ..	138
Damaster 125	Gandaritis	... 184	Leucospis ...	169
Damalis 132	Gempylodes	... 101	Lipothyrea ...	157
Daphnis 136	Geometra	... 151	Lomaptera ...	144
Darasana 165	Glancyus 131	Lophopteryx ...	132
Dasychira 164	Glenea 130	Lucanus 186
Demelius 161	Glenida 181	Lycæna 108
Diartiger...	... 146	Glyptothea	... 186	Lymantria ...	164
Diastotropis	... 171	Gnathocera	... 182	Lysizone 157
Diestica 158	Gnesis 158	Macroglossum ...	140
Diludia 140	Gonophora...	117, 153	Macroma ...	182
Diopethes	... 158	Helota	133, 144, 153	Macrophyta ...	156
Dioristus 157	Hemitrachys	... 126	Maschalix ...	181
Diplocladon	... 167	Hesthesis...	... 188	Mastygophora ...	173
Doryphora	... 129	Heterocampa	... 132	Mecocerus ...	171
Doticus 104	Heterorhina	... 153	Megachile ...	169
Drupadia	... 165	Higonius 145	Megacriodes ...	149
Dryocora	... 102	Hylotastes	... 103	Melanopolia ...	170
Egnasia 173	Hylotoma	... 156	Melanus 174
Elezira 133	Hypena 173	Melittia 131
Ennomos	... 184	Jchnea 126	Meloëtyphlus ...	161
Enyo 140	Ichneumon	... 169	Mesomphalia ...	157
Ercheia 177	Idmais 143	Milionia 183
Erebia 105	Immedia 158	Monema 187
Erythresthes	... 188	Inopeplus	... 134	Monocoryna ...	167
Eterusia 127	Isse 188	Monohammus ...	170
Eudicella...	... 182	Ites 157	Mouhotia	125, 129
Eulytus 109	Ixias 127	Murlida 173
Euplectus	... 146	Lagyra 151	Mutilla 169
Euporus 180	Lampides	... 165	Mycteristes	... 186

	PLATE		PLATE		PLATE
Narcisa 134	Pheosia 187	Rhynchnia ...	173
Neoglypsus ...	135	Philanglaus ...	116	Rhytiphora 144, 154,	157
Nephele ...	141	Phoracantha ...	161	Rusicada ...	150
Niarius ...	135	Phromnia ...	152	Saraca ...	173
Nodinus ...	133	Phylloscelis ...	134	Satadra ...	165
Noserocera ...	170	Phymæus ...	158	Scaphisoma ...	138
Notozona ...	167	Pinacopteryx ...	189	Seudyra ...	131
Novitas ...	138	Phymatophæa ...	174	Simorrhina ...	182
Nyctemera ...	178	Planema ...	189	Siteutes ...	161
Ocinara ...	164	Planodes ...	188	Sphenophorus ...	181
Ænomia ...	158	Platycotylus ...	134	Sphenorhina 148,	152
Olenecamptus ...	175	Platypleura 128,	152	Stenaspis ...	171
Olesterus ...	123	Plectrone ...	185	Stenotarsia ...	182
Omadius ...	126	Pœcilopsaltria ...	128	Stephanorhynchus	138
Ophion ...	162	Polyplastus ...	182	Sternocera ...	121
Opsamates ...	171	Polythysana ...	119	Stigmodera ...	111
Pachydon ...	174	Polyzonus ...	180	Strymon ...	115
Pachyura ...	138	Pompilus ...	169	Symphyletes ...	154
Pactola ...	129	Prigenia ...	185	Syntelia ...	133
Pangora ...	131	Priocnemis ...	137	Sypna 159,	160
Paniscus ...	162	Prorana ...	168	Tæniodera ...	185
Papilio 139,	166	Promeces ...	180	Tanylamia ...	175
Paraphylax ...	153	Prometopia ...	134	Tenaris ...	166
Paratillus ...	129	Prostenus ...	129	Tenerus ...	122
Paromaliala ...	174	Psammœcus ...	134	Tenthredo ...	156
Pedoptila ...	165	Pselaphanax ...	120	Teracolus ...	189
Pelargoderus ...	180	Pselaphus ...	146	Tesseratoma ...	135
Pelonium ...	126	Pseudacræa ...	150	Thecla 107, 113, 114,	115
Peniticus ...	138	Psorochroa ...	171	Thelyphassa ...	133
Penthea ...	144, 154	Redoa ...	164	Theritas ...	163
Periaptodes ...	110	Remigia ...	178	Thoris ...	161
Phellus ...	124	Rhopalotoma ...	180	Thylactus ...	175

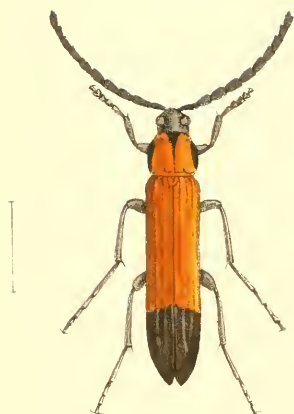
	PLATE		PLATE		PLATE
Tithoes ...	167	Triptogon ...	140	Ulonotus ...	149
Tmesisternus ...	157	Tritocosmia ...	188	Urapteryx ...	184
Tomaspis ...	148	Tropicoris ...	135	Vanessa ...	106, 178
Tophoderes ...	171	Tropopterus ...	174	Xenoloba ...	185
Tosena ...	147	Trygæus... ...	133	Xynenon ...	154
Toxocampa ...	160	Tryphocaria ...	161	Yphthima ...	179
Tricholamia ...	170	Tycracona ...	118	Zammara ...	128
Triomicrus ...	146	Tympanoterpes	168	Zaranga ...	164



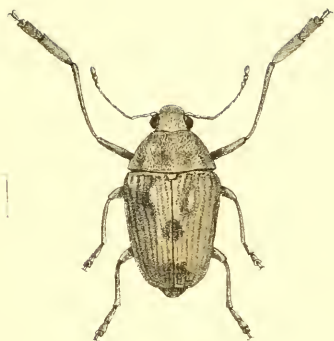
Gempylodes superans,
Pascoe, Ann & Mag Nat Hist., IX, (1882), p. 26
Siam



Dryocora Howitti,
Pascoe, Proc Ent Soc., (1868), p. XI
New Zealand



Hylotastes terminatus.
Pascoe, Ann & Mag Nat Hist., IX. (1882), p 26
Borneo.



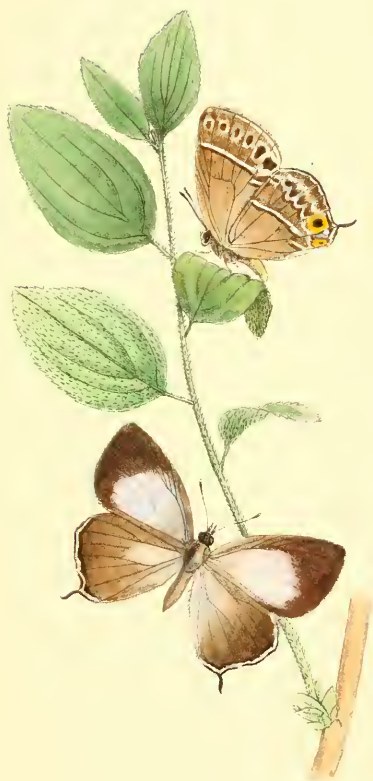
Doticus palmaris,
Pascoe, Ann & Mag. Nat Hist, IX, (1882), p. 27.
Queensland



Erebia scoparia,
Butler, Proc. Zool. Soc., (1881), p. 849
Japan.



Vanessa lunigera,
Butler, Proc. Zool. Soc., (1881), p. 850
Japan.



Thecla orsedice,
Butler, Proc. Zool. Soc., (1881), p. 852



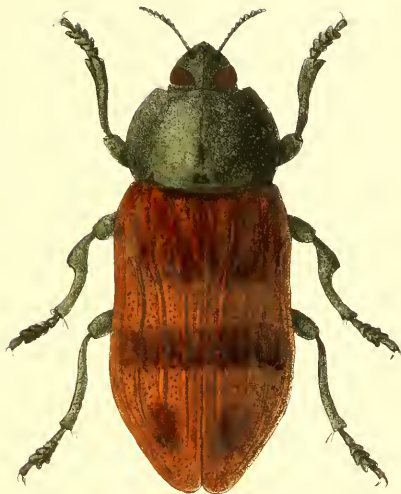
Lycæna iburiensis
Butler, Proc. Zool. Soc., (1881), p. 852



Eulytus nodipennis,
Waterhouse, Ann & Mag. Nat. Hist., IX, (1882), p. 175.
East Africa



Perilaptes testator,
Exon, *Trans Ent Soc.*, *Ill.*, (1866), p. 281
New Guinea



Stigmodera tibialis.
Waterhouse, Trans Ent Soc, (1874), p. 546
South Australia



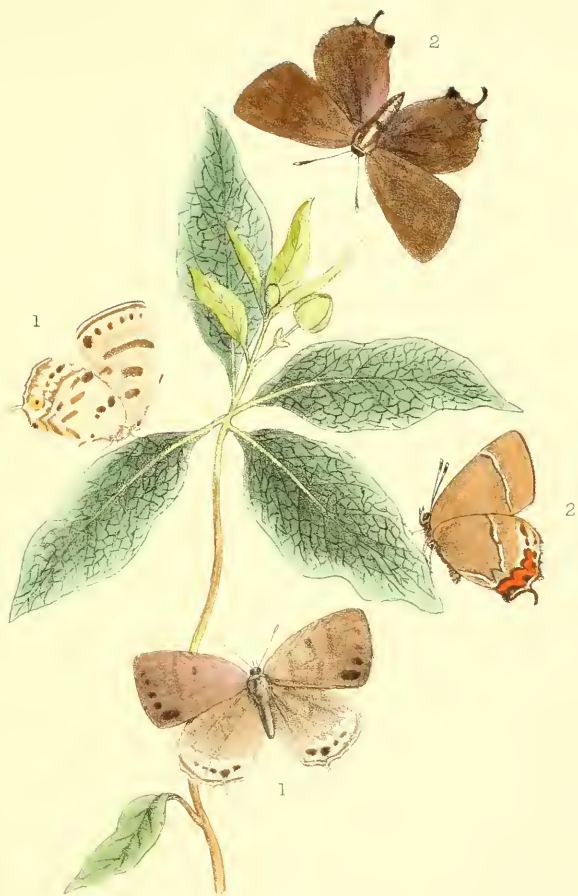
Campylotes Atkinsoni.
Moore, Deser of Lepid. Ins in Coll. Atkinsoni, I. (1879), p. 17
Darjiling.



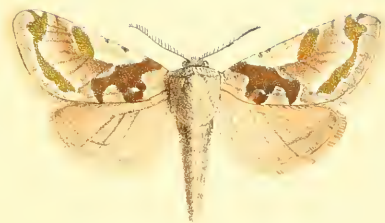
Thecla ibara,
Butler, Proc. Zool. Soc., (1881), p. 852.
Japan.



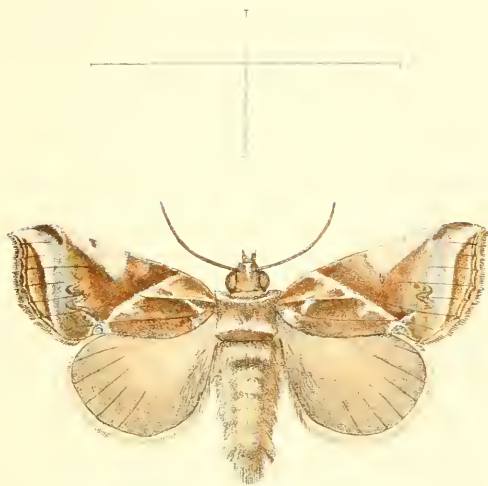
1 *Thecla regina*, 2 *Thecla signata*,
Butler, Proc Zool Soc., (1881), p 853-4
Japan



1 *Thecla butleri*, 2 *Strymon fentoni*,
Butler & Fenton, Proc. Zool. Soc., (1881), p 853-4.
Japan.

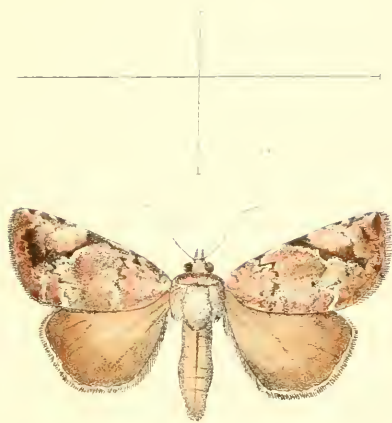


Phylangia ornatus,
Butler, Trans Ent. Soc., (1882), p. 23
Chil.

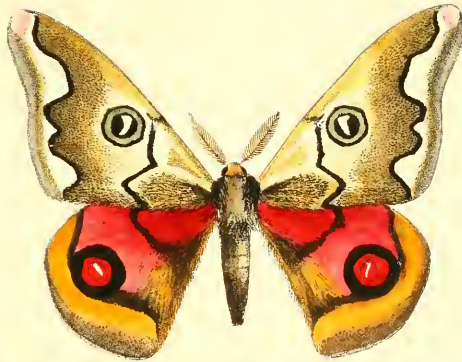


Comptosia *compta* *Moore*
Moore, 1891, Entomologist's Magazine, vol. 8, p. 120
Khasia Hills

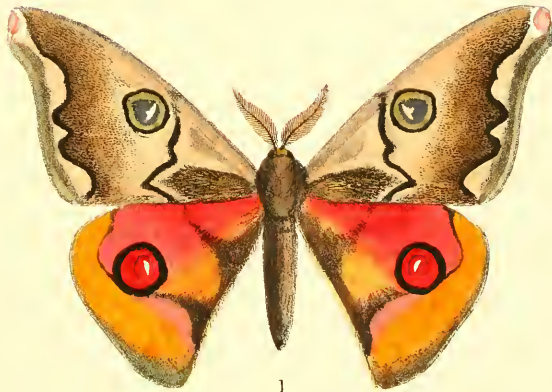




Tycraona obliqua,
Mon. Deser. Lep. Ins. Coll. Atkinson, pt. II, 1882, p. 95
Darjeeling



2.



1

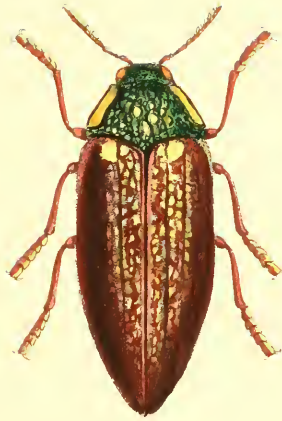
1.
Attacus Andromeda,
Philippi, Linn. Ent., XIV. (1860), p. 280.

Valdivia

2.
Polythysana Edmonsii,
Butler, Trans. Ent. Soc., (1882), p. 19.
 Chih.



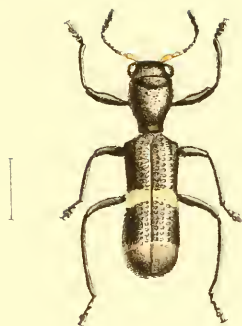
Pselaphanax setosus,
Walker, Ann & Mag Nat Hist., III, (1859), p. 52
Ceylon



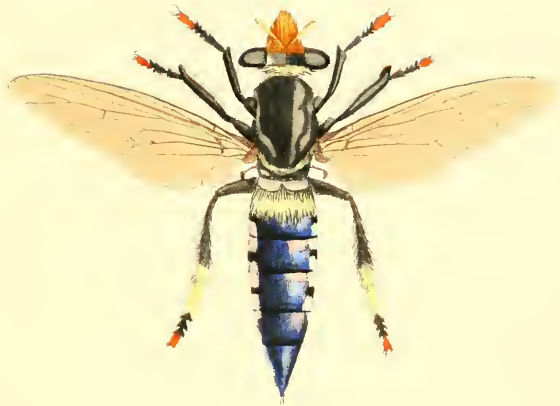
Sternocera Syriaca,
Saunders. Cist. Ent., I. (1874), p. 220.
Syria



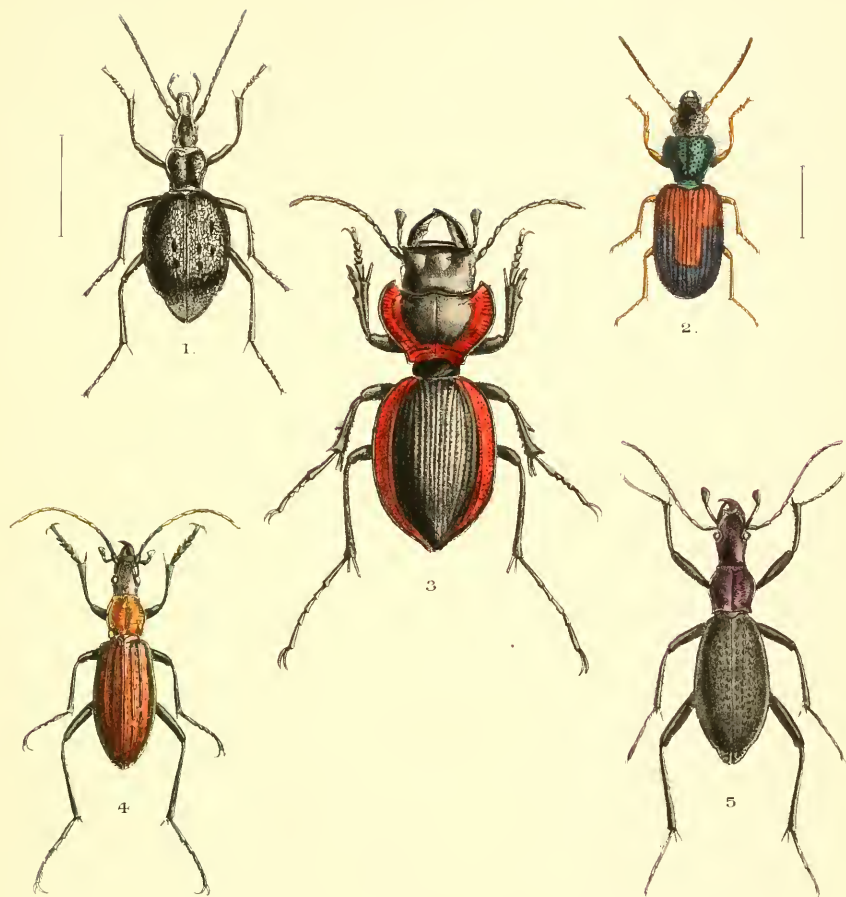
Tenerus flavicollis,
Gorham, Trans. Ent. Soc. Lond., (1877), p.404.
Laos.



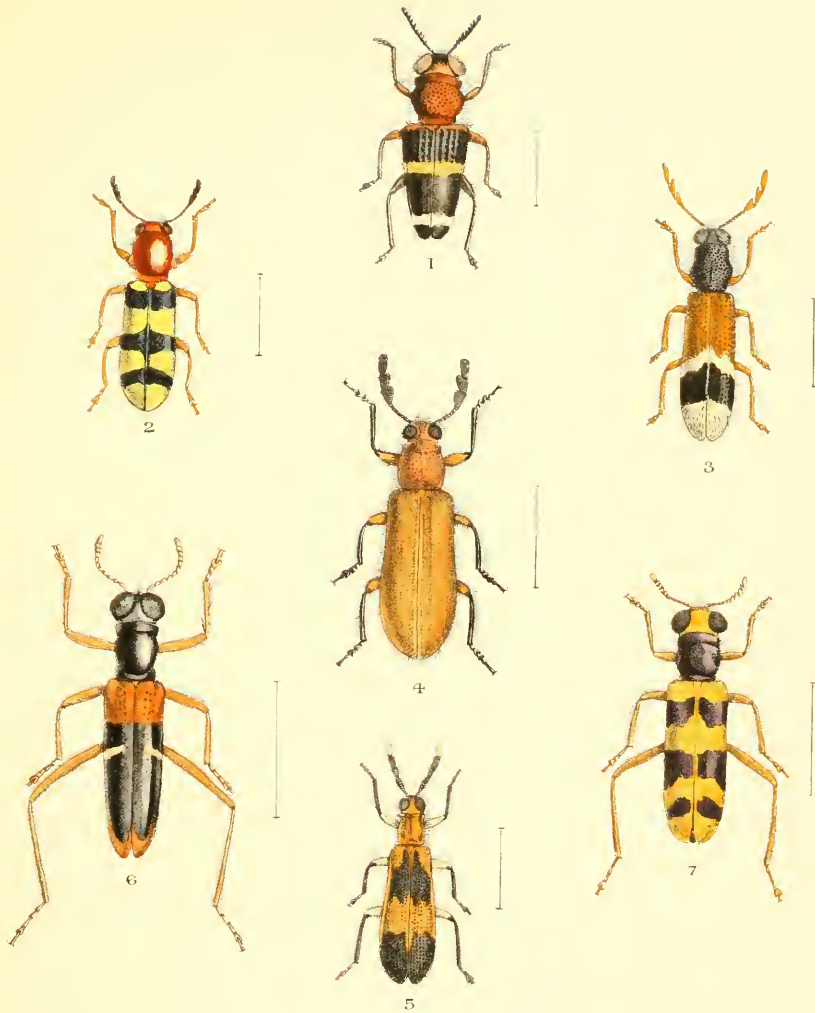
Olesterus gracilis,
Gorham, Cist. Ent., II, (1876), p. 87.
Australia.



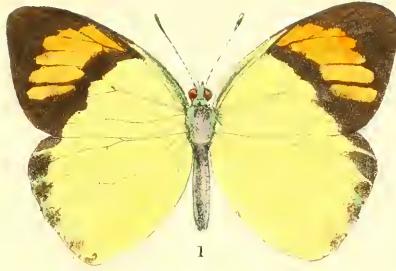
Phelus glaucus,
Walker, Insecta Saundersiana, (1850), p.110
W. Australia.



1. *Cychrus convexus*, *Morawitz, Mem. Ac. Sci. St. Petersb.*, VI, (1863), p. 7. Japan
 2. *Cymindis damio*, *Bates, Trans. Ent. Soc.*, (1873), p. 310. Japan.
 3. *Mouhotia Batesi*, *Lewis, Ent. Mo. Mag.*, XV, (1879), p. 186. Burmah.
 4. *Carabus Gehini*, *Fairmaire, Petit Nouvelle Ent.*, II, (1876), p. 37. Japan
 5. *Damaster capito*, *Lewis, Ent. Mo. Mag.*, XVII, (1881), p. 197. Japan



- | | | | |
|----|-------------------------------|---|-----------------|
| 1. | <i>Hemtrachys bizonatus</i> , | <i>Gorham, Cast Ent., II, (1876), p. 92</i> | Singapore |
| 2. | <i>Pelonium ruficolle</i> , | <i>Gorham, Trans Ent. Soc., (1877), p. 419.</i> | Parana |
| 3. | <i>Pelonium Badeni</i> , | <i>Gorham, Trans Ent. Soc., (1877), p. 420.</i> | Brazil. |
| 4. | <i>Pelonium extraneum</i> , | <i>Gorham, Trans Ent. Soc., (1877), p. 423.</i> | Laos. |
| 5. | <i>Ichnea mitella</i> , | <i>Gorham, Trans Ent. Soc., (1877), p. 411.</i> | Amazons. |
| 6. | <i>Omadius abscissus</i> , | <i>Gorham, Cast Ent., II, (1876), p. 106.</i> | Batchuan. |
| 7. | <i>Omadius vespiiformis</i> , | <i>Gorham, Cast Ent., II, (1876), p. 103.</i> | Phillippine Is. |



1



2



3.

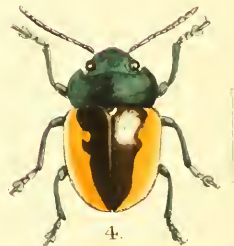
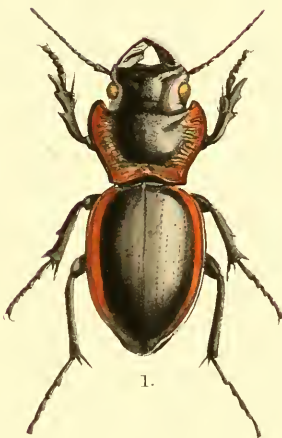
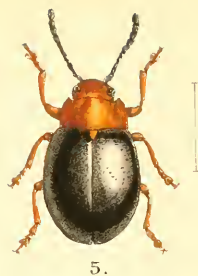


4

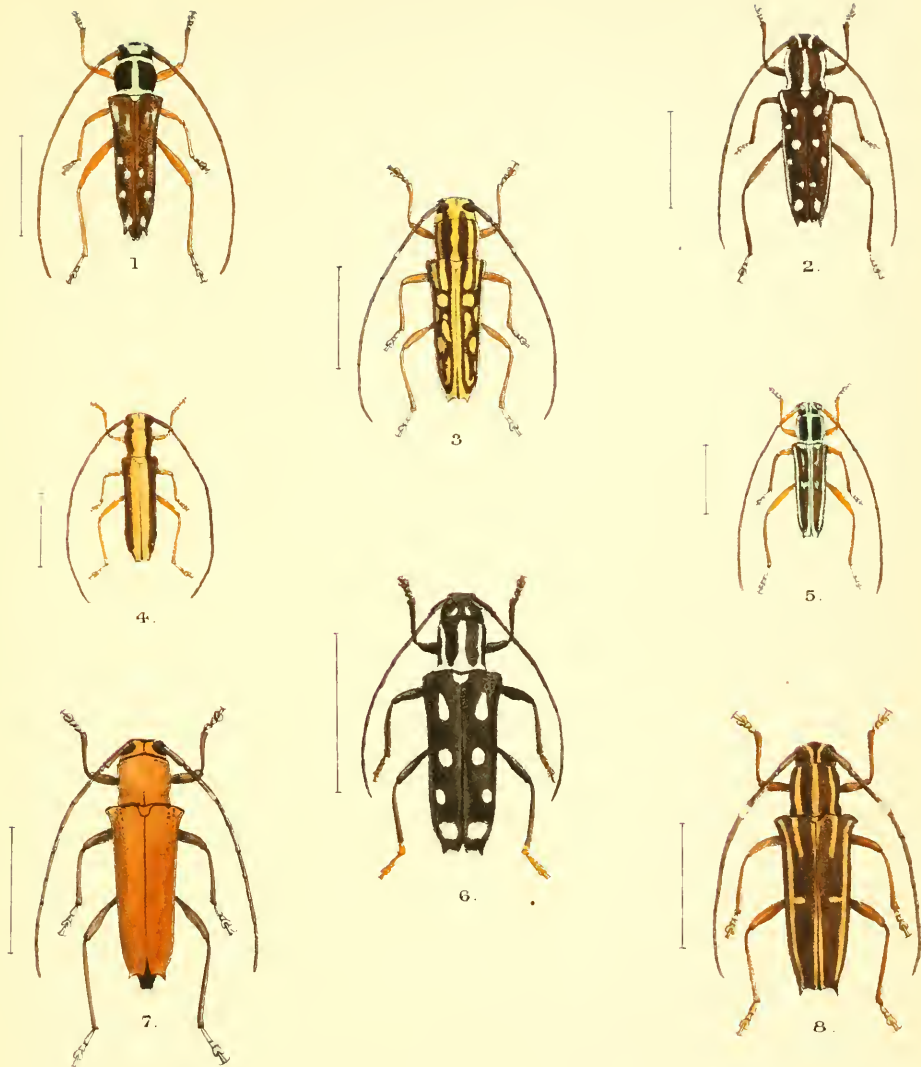
- 1 *Ixias satadra*, ♂, *Moore, Ann. Nat. Hist., XX, (1877), p. 50.* Simia
 2. *Apatura bhavana*, ♂, *Moore, Trans. Ent. Soc., (1881), p. 307.* N. E. Bengal.
 3. *Eterusia shahama*, ♀, *Moore, Proc. Zool. Soc. Lond., (1865), p. 801.* Darjeeling.
 4. *Eusemia funebris*, *Moore, Proc. Zool. Soc. Lond., (1872), p. 569.* Darjeeling.



1. *Zamnara columbia*, *Distant, Trans. Ent. Soc., (1881), p. 628.* Colombia.
 2. *Pœcilopsaltria leopardina*, *Distant, Trans. Ent. Soc., (1881), p. 630.* E. Africa.
 3. *Platyleura inquinata*, *Distant, Trans. Ent. Soc., (1881), p. 631.* E. Africa.



1. *Mouhotia convexa*, *Lewis, Ent. Mo. Mag.*, XIX, (1883.) p. 193. Laos
2. *Paratillus basalis*, *Gorham, Trans. Ent. Soc.*, (1878.) p. 158. Morton Bay
3. *Doryphora militaris*, *Jacoby, Proc. Zool. Soc.*, (1878.) p. 991. Colombia
4. *Doryphora insulans*, *Jacoby, Proc. Zool. Soc.*, (1878.) p. 147. Peru.
5. *Doryphora fulvicollis*, *Jacoby, Cistula Ent.*, II, (1879.) p. 516. Peru.
6. *Doryphora fulvotata*, *Jacoby, Cistula Ent.*, II, (1879.) p. 519. Peru.
7. *Prosthenus militaris*, *Pascoe, Ann. & Mag. Nat. Hist.*, IX, (1882.) p. 35. Ega.
8. *Pachtola variabilis*, *Pascoe, Ann. & Mag. Nat. Hist.*, XVII, (1876.) p. 38. N. Zealand.
9. *Apirocalus cornutus*, *Pascoe, Cistula Ent.*, II, (1882.) p. 590. Fiji.



1. *Glenea adelia*.
2. *Glenea coms*,
3. *Glenea detrita*,
4. *Glenea eclectica*,
5. *Glenea concinnata*,
6. *Glenea honora*.
7. *Glenea tringaria*,
8. *Glenea extensa*,

Pascoe, Trans. Ent. Soc., III, (1867), p. 367

Pascoe, Trans. Ent. Soc., III, (1867), p. 366.

Pascoe, Trans. Ent. Soc., IV, (1858), p. 259.

Pascoe, Trans. Ent. Soc., III, (1867), p. 399.

Pascoe, Trans. Ent. Soc., III, (1867), p. 403.

Pascoe, Trans. Ent. Soc., III, (1867), p. 373.

Pascoe, Trans. Ent. Soc., III, (1867), p. 412.

Pascoe, Trans. Ent. Soc., IV, (1858), p. 258.

Sarawak.
Singapore.
Macassar.
Sarawak
Menado.
Penang.
Menado
Singapore



1.



2.



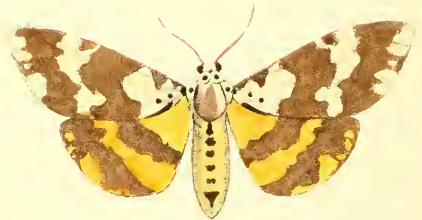
3.



4.

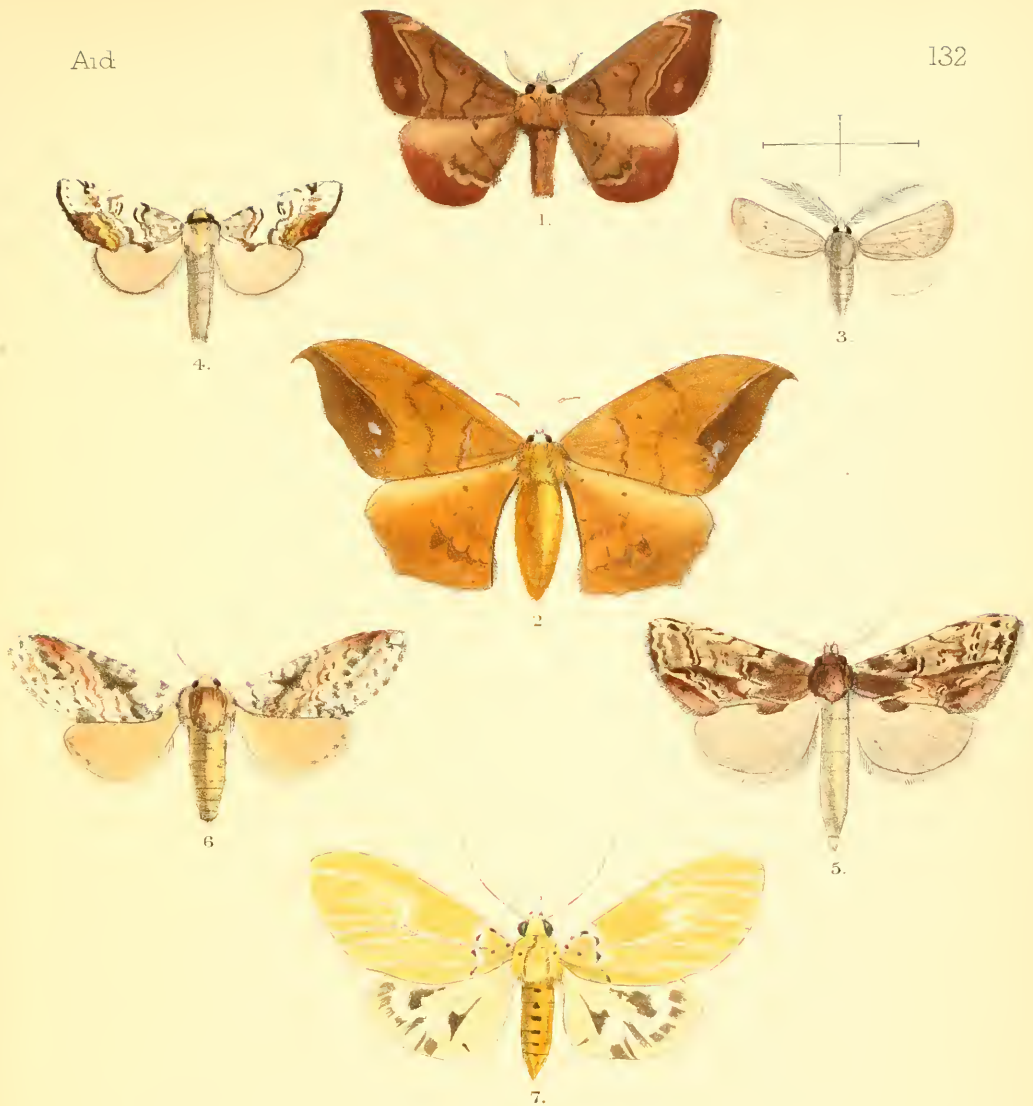


5.

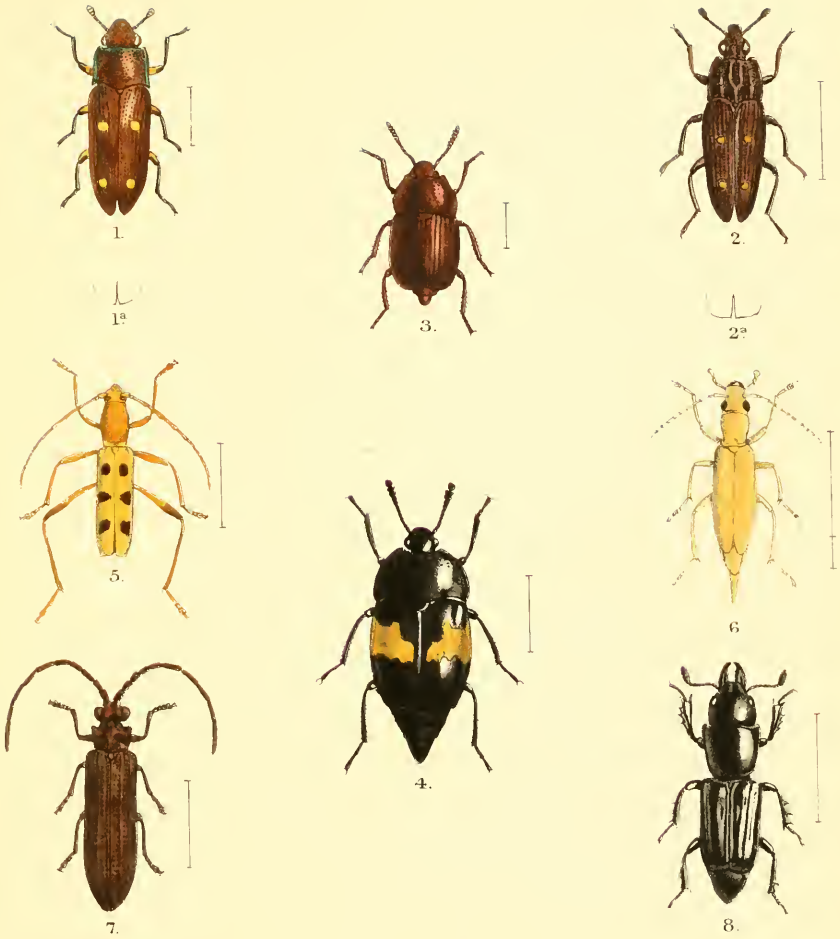


6.

1. *Glaryncus tricolor*, Moore, *Descr. of Lepid. in Coll. Atkinson*, I, (1879), p. 38 Darjeeling.
2. *Chalcosia nympha*, Moore, *Proc. Zool. Soc. Lond.*, (1879), p. 704 Hainan.
3. *Chelura basiflava*, Moore, *Proc. Zool. Soc. Lond.*, (1879), p. 391 Darjeeling.
4. *Melittia gigantea*, Moore, *Proc. Zool. Soc. Lond.*, (1879), p. 413 Masura.
5. *Seudyra venosa*, Moore, *Proc. Zool. Soc. Lond.*, (1879), p. 389 Darjeeling.
6. *Pangora matherana*, Moore, *Proc. Zool. Soc. Lond.*, (1879), p. 396 Bombay.



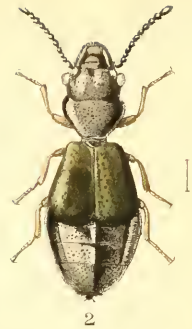
12. *Andracea trilochoides*, ♂, ♀, Moore, *Proc. Zool. Soc.*, (1865) p. 320. Darjeeling
 3. *Acousmaticus magnicornis*, Butler, *Trans. Ent. Soc.*, (1882) p. 8. Chili.
 4. *Lophopteryx argentata*, Moore, *Desc. Lep. Coll. Atkins*, I. (1879) Darjeeling
 5. *Lophopteryx ferruginosa*, Moore, *Desc. Lep. Coll. Atkins*, Darjeeling.
 6. *Heterocampa maculata*, ♀, Moore, *Proc. Zool. Soc.*, (1879) p. 61. NW Himalaya
 7. *Danalis concana*, Moore, *Proc. Zool. Soc.*, (1878.) p. 4. S. India.



1. *Helota cereopunctata*, Lewis, *Ent. Mo. Mag.*, XVII. (1881) p. 255. Japan.
2. *Helota gemmata*, Gorham, *Trans. Ent. Soc.*, (1874) p. 447. Japan.
3. *Trygæus princeps*, Sharp, *Trans. Ent. Soc.*, (1874) p. 421. Japan.
4. *Nodinus leucofasciatus*, Lewis, *Ann. & Mag. Nat. Hist.*, IV (1879) p. 460. Japan.
5. *Clytus (Elexira) Balyi*, Pascoe, *Trans. Ent. Soc.*, V. (1859) p. 27. India.
6. *Thelyphassa diaphana*, Pascoe, *Ann. & Mag. Nat. Hist.*, XVIII. (1876) p. 58. N Zealand.
7. *Cupes clathratus*, Solsky, *Hor. Soc. Ent. Ross.*, VII. (1870) p. 370. Japan.
8. *Syntelia histeroides*, Lewis, *Ent. Mo. Mag.*, XIX. (1883) p. 138. Japan.



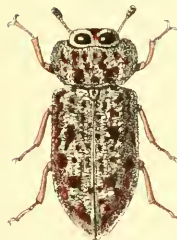
1



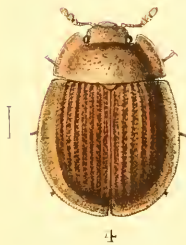
2



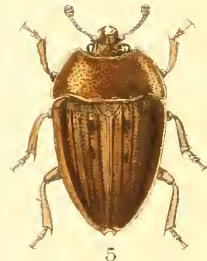
3a



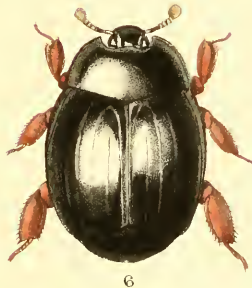
3



4



5



6



7



8.

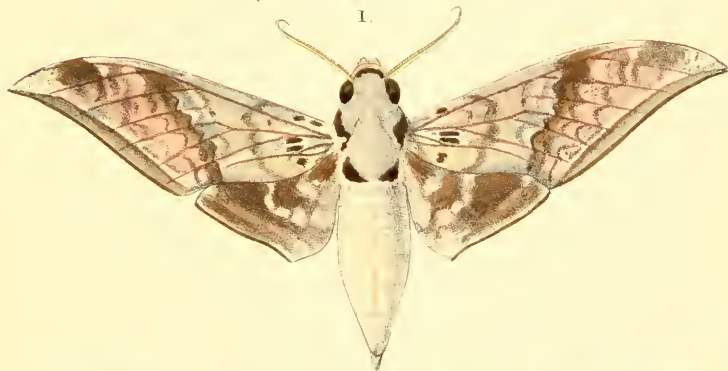
- | | | |
|--------------------------------------|---|---------|
| 1. <i>Prometopia rhombus</i> , | <i>Olliff. Trans. Ent. Soc.</i> , (1883), p. 176. | Borneo. |
| 2. <i>Inopeplus borneensis</i> , | <i>Olliff. Trans. Ent. Soc.</i> , (1883), p. 182. | Borneo. |
| 3. <i>Narcisa lynceus</i> , | <i>Olliff. Trans. Ent. Soc.</i> , (1883), p. 178. | Borneo. |
| 4. <i>Ancyrona Pryeri</i> , | <i>Olliff. Trans. Ent. Soc.</i> , (1883), p. 179. | Borneo. |
| 5. <i>Lasiodactylus notabilis</i> , | <i>Olliff. The Entomologist</i> , (1883), p. 98. | Ceram. |
| 6. <i>Phylloscelus orbicularis</i> , | <i>Olliff. Trans. Ent. Soc.</i> , (1883), p. 174. | Borneo. |
| 7. <i>Psammœcus hirsutus</i> , | <i>Olliff. Trans. Ent. Soc.</i> , (1883), p. 183. | Borneo. |
| 8. <i>Platycotylus inusitatus</i> , | <i>Olliff. Trans. Ent. Soc.</i> , (1883), p. 183. | Borneo. |



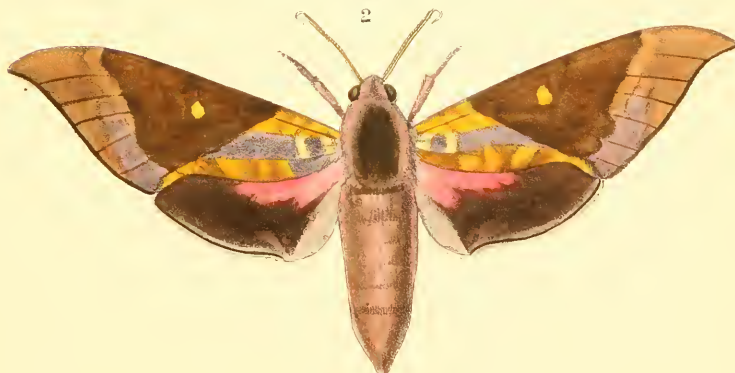
1. *Tesseratoma hornimani*, *Distant, Ent. Mo. Mag., XIV. (1877.) p. 63.* Camaroons
2. *Neoglypsus viridicatus*, *Distant, Ann. & Mag. Nat. Hist., VIII. (1881.) p. 27.* Japan
3. *Niarius illuminatus*, *Distant, Trans. Ent. Soc., (1881.) p. 211.* Australia
4. *Cephaloplatys fasciatus*, *Distant, Trans. Ent. Soc., (1881.) p. 212.* Queensland
5. *Tropicoris japonicus*. *Distant, Ent. Mo. Mag., XIX (1882.) p. 76.* Japan.



1



2

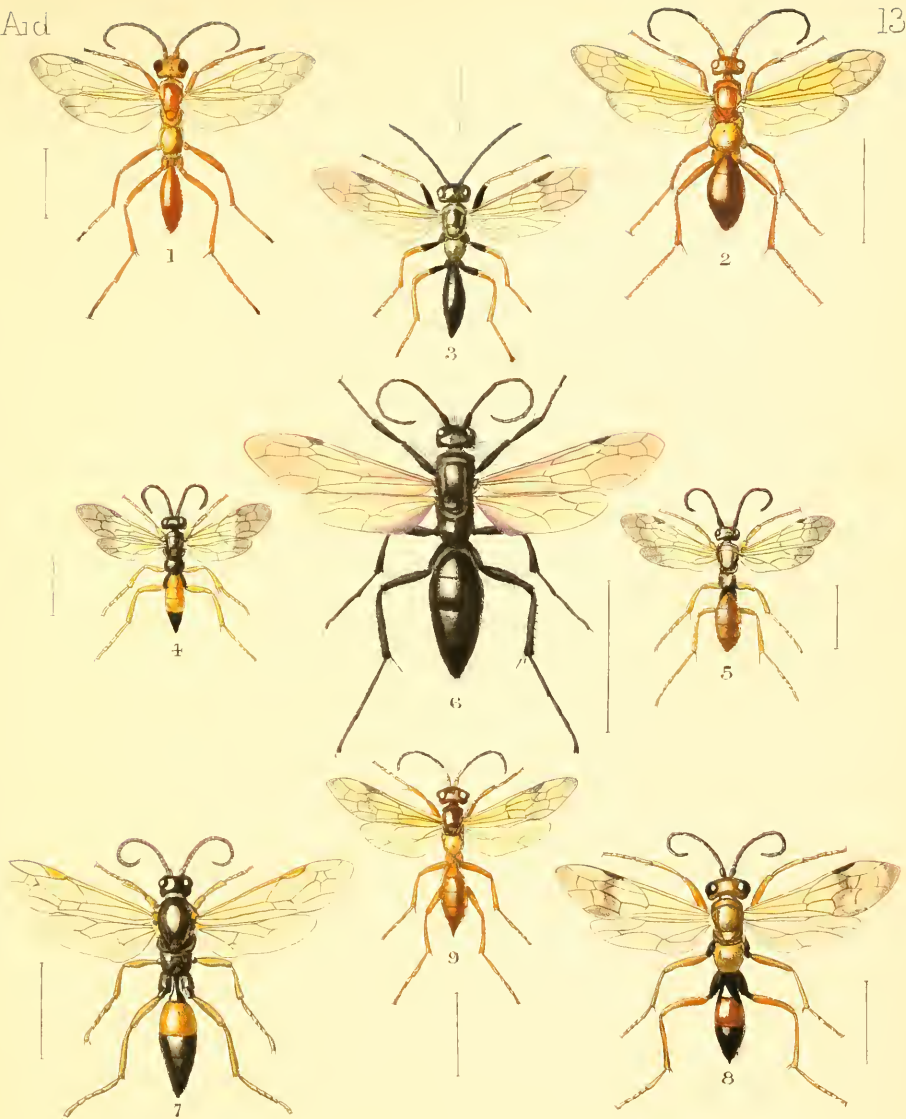


3

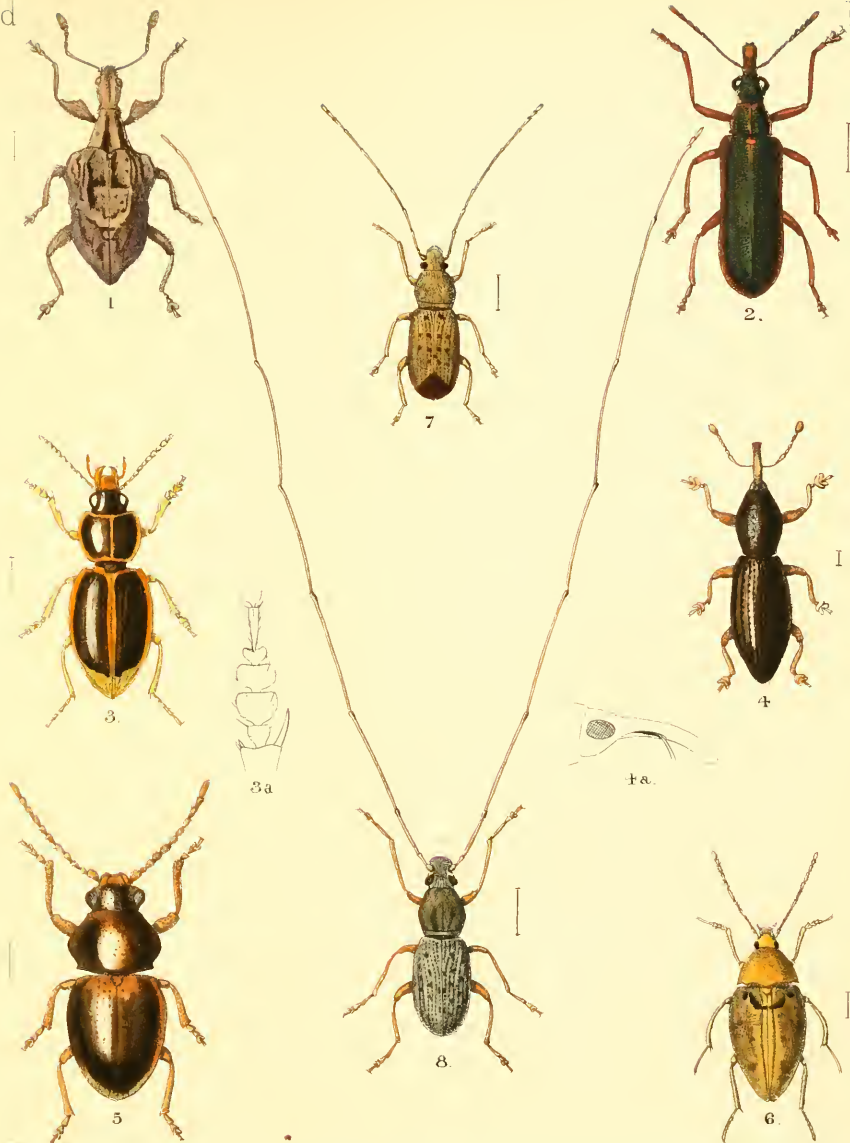
1. *Daphnis torenia*,
2. *Ambulyx argentata*,
3. *Ambulyx Elwesi*,

Druce, Ent. Month. Mag., XIX, (1882), p. 16.
Druce, Ent. Month. Mag., XIX, (1882), p. 17.
Druce, Ent. Month. Mag., XIX, (1882), p. 17.

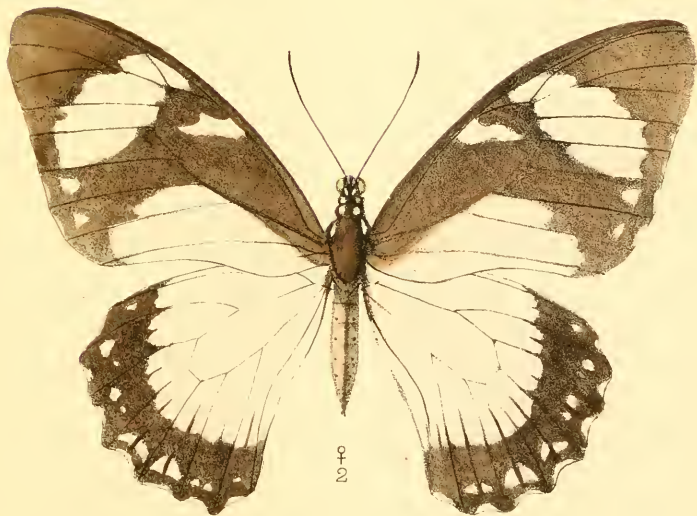
Fiji Is
Coch. China
Darjeeling



- | | | | |
|-------|---------------------------------|---|-------------|
| 1, 2. | <i>Procnemis Wakefieldii</i> , | ♂♀ Kirby, <i>Trans. Ent. Soc.</i> , (1881) p 39. | N. Zealand. |
| 3. | <i>Procnemis xenos</i> , | Kirby, <i>Trans. Ent. Soc.</i> , (1883) p 200. | N. Zealand. |
| 4, 5. | <i>Procnemis conformis</i> , | ♂♀, Smith, <i>Trans. Ent. Soc.</i> , (1876) p 482. | N. Zealand. |
| 6. | <i>Procnemis monachus</i> | Smith, <i>Cat. Hym. Ins.</i> , B. M. III. (1855) p. 164 | N. Zealand. |
| 7. | <i>Procnemis Pascoei</i> , | Kirby, <i>Trans. Ent. Soc.</i> , (1883) p. 200. | N. Zealand. |
| 8. | <i>Procnemis Huttoni</i> , | Kirby, <i>Trans. Ent. Soc.</i> , (1883) p. 199. | N. Zealand. |
| 9. | <i>Procnemis maculipennis</i> , | Smith, <i>Trans. Ent. Soc.</i> , (1876) p 482. | N. Zealand. |



1. *Stephanorhynchus crassus*, *Broun, Man. N. Zeal. Coleopt.*, (1880) p. 464. N. Zealand.
 2. *Pacryura rubicunda*, *Broun, Man. N. Zeal. Coleopt.*, (1880) p. 469. N. Zealand.
 3. *Lecanomerus fuliginosus*, *Broun, Man. N. Zeal. Coleopt.*, (1880) p. 48. N. Zealand.
 4. *Novitas nigrans*, *Broun, Man. N. Zeal. Coleopt.*, (1880) p. 528. N. Zealand.
 5. *Penticius robustus*, *Broun, Man. N. Zeal. Coleopt.*, (1880) p. 628. N. Zealand.
 6. *Scaphisoma concinna*, *Broun, Man. N. Zeal. Coleopt.*, (1880) p. 158. N. Zealand.
 7, 8. *Exilis spectabilis*, *Broun, Man. N. Zeal. Coleopt.*, (1880) p. 558. N. Zealand.







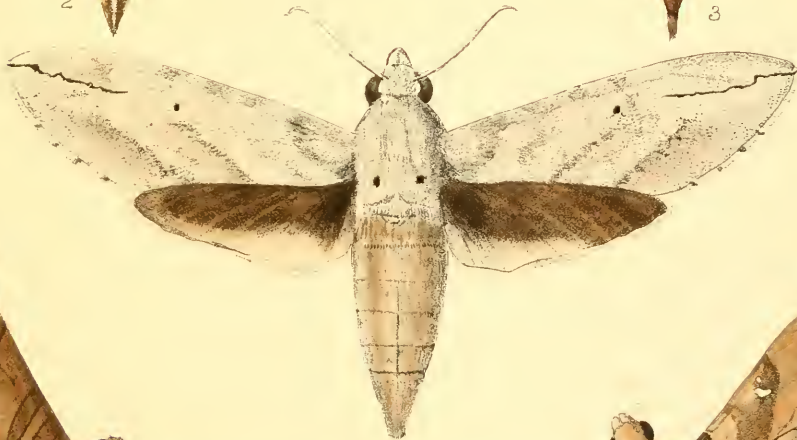
1



2



3



4

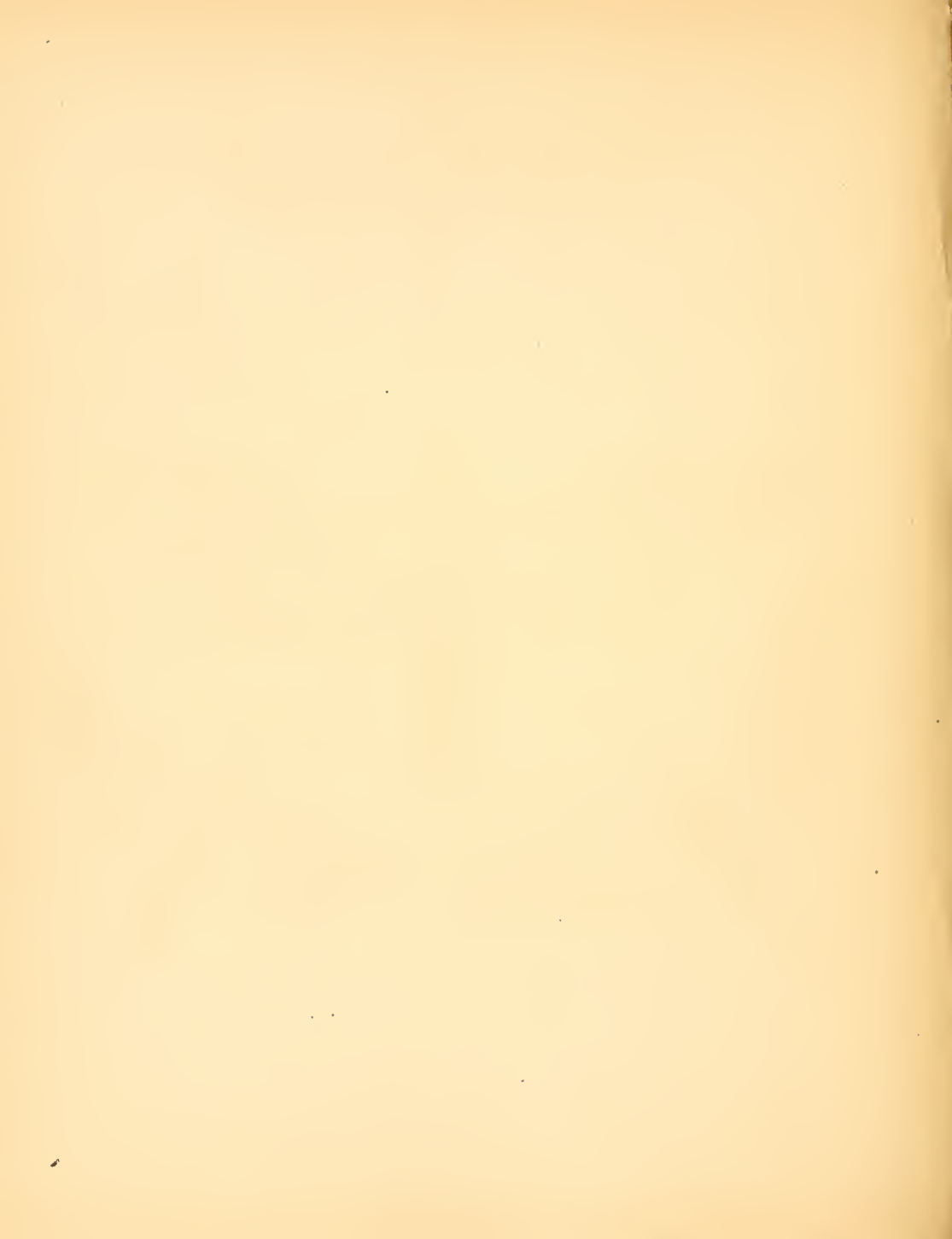


5



6

- | | |
|---|-------------|
| 1. <i>Macroglossum cynnaris</i> , <i>Guerrin, Iconographie</i> , p.495. | Sylhet. |
| 2. <i>Chærocampa margarita</i> , <i>Kirby, Trans. Ent. Soc.</i> , (1877), p. 240. | Queensland |
| 3. <i>Eryx excisa</i> , <i>Walker, List. Lep. Het. Brit. Mus.</i> , VIII, (1856), p.119 | Pt Natal. |
| 4. <i>Diludia Bethia</i> , <i>Kirby, Trans. Ent. Soc.</i> , (1877), p. 243 | Queensland. |
| 5. <i>Triptogon rectilinea</i> , ♂ <i>Moore, Proc. Zool. Soc.</i> , (1879), p. 388 | N. India. |
| 6. <i>Aleuron Butleri</i> , <i>Kirby, Trans. Ent. Soc.</i> , (1877), p. 240. | W. Indies. |





- | | |
|--|-------------|
| 1. <i>Cherocampa andamanensis</i> , Kirby, <i>Trans. Ent. Soc.</i> , (1877), p. 242. | Andaman I. |
| 2. <i>Acherontia</i> Sculda, Kirby, <i>Trans. Ent. Soc.</i> , (1877), p. 242. | Borneo. |
| 3. <i>Nephele Charoba</i> , Kirby, <i>Trans. Ent. Soc.</i> , (1877), p. 243. | Madagascar. |
| 4. <i>Nephele infernalis</i> , Kirby, <i>Trans. Ent. Soc.</i> , (1877), p. 244. | Ashantee. |



Aid

42.



1.



2.

1. *Bunæa Aslauga*,
2. *Bunæa Thomsoni*,

Kirby, Trans. Ent. Soc., (1877), p. 18.
Kirby, Trans. Ent. Soc., (1877), p. 19

Madagascar
Camaroons.



1, 2 *Idmais maimuna*, Kirby, *Proc. Roy. Dublin Soc.*, II, (1880), p. 337.
 3, *Idmais eris*, Klug, Kirby, *Proc. Roy. Dublin Soc.*, II, (1880), p. 336.
 Edwin Wilson, del et lith.

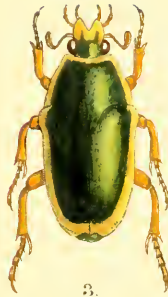
Africa
 Abyssinia
 Münster, Brauer



1.



2.



3.



4.



5.

1. *Helota lævigata*,2. *Helota pusilla*,3. *Lomaptera DuBoulayi*,4. *Rhytiphora caprina*,5. *Penthea pardalis*,*Oberthür, Coleopt. Novit., I, (1883), p. 59.**Oberthür, Coleopt. Novit., I, (1883), p. 60.**Thomson, Bull. Soc. Ent. Fr., (1878), p. CXXXVIII.**Newman, The Entomologist, (1842), p. 362.**Newman, The Entomologist, (1842), p. 414.*

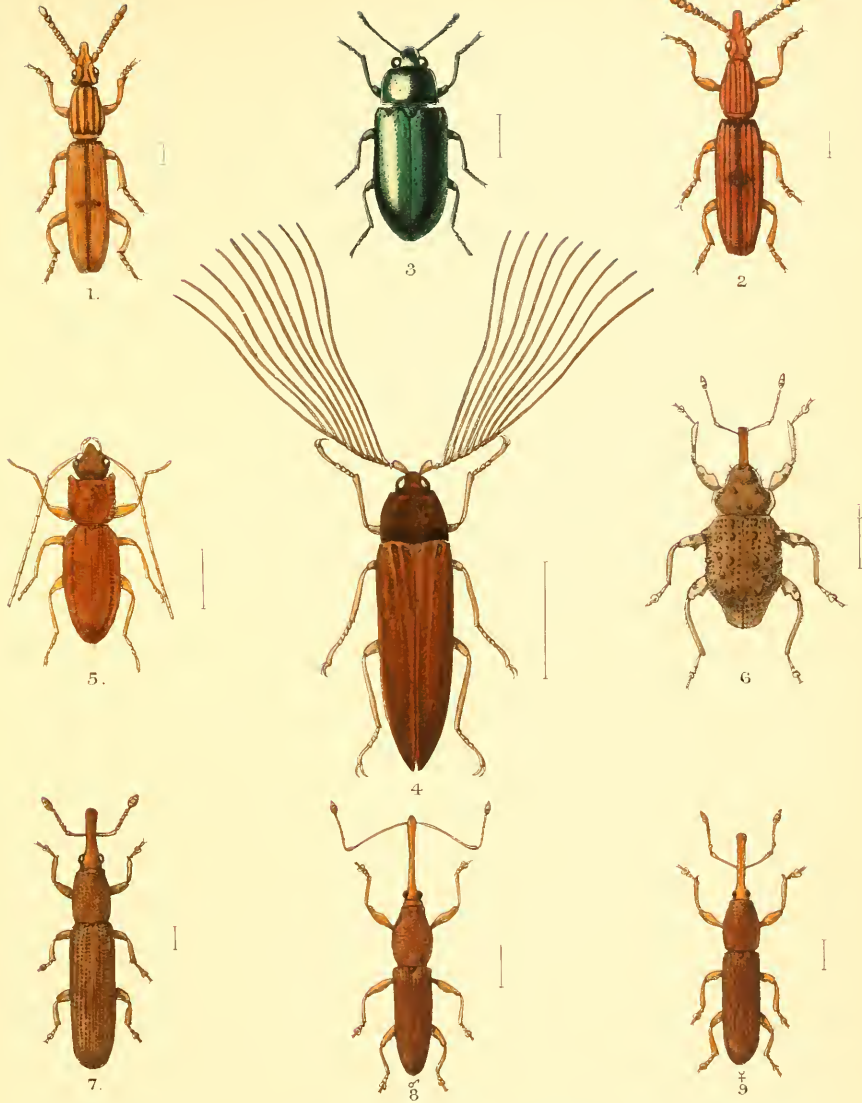
Darjeeling.

Darjeeling.

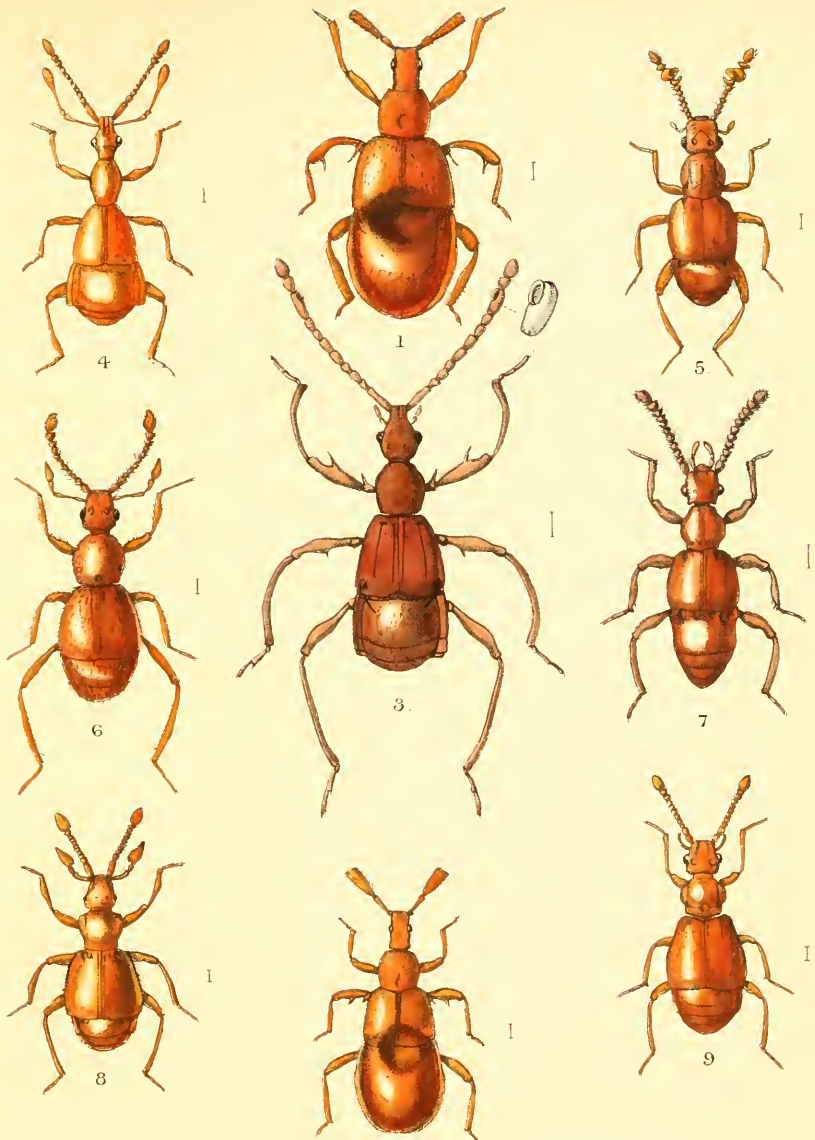
E. Australia.

E. Australia.

S. Australia.



- | | | |
|-----------------------------------|--|-------------|
| 1. <i>Higonius Poweri</i> , | <i>Lewis, Journ. Linn. Soc. XVII, (1883), p. 299</i> | Penang. |
| 2. <i>Higonius crux</i> , | <i>Olliff, Journ. Linn. Soc. XVII, (1883), p. 300.</i> | Andaman Is |
| 3. <i>Arthropus Brouni</i> , | <i>Sharp, Ent. Mo. Mag XIII, (1876), p. 76.</i> | N Zealand |
| 4. <i>Callirhipis longicornis</i> | <i>Waterhouse, Trans Ent. Soc. (1877), p. 385.</i> | Andaman Is. |
| 5. <i>Brontes pleuralis</i> , | <i>Sharp, Ent. Mo. Mag XIII, (1877), p. 270.</i> | N Zealand |
| 6. <i>Crisius variegatus</i> , | <i>Broun, Man. N. Zeal. Coleopt., (1880), p. 501.</i> | N Zealand. |
| 7. <i>Agrilochilus prolixus</i> , | <i>Broun, Man. N. Zeal. Coleopt., (1880), p. 521</i> | N Zealand |
| 8. <i>Canthorhynchus bellus</i> , | <i>Broun, Man. N. Zeal. Coleopt., (1880), p. 526</i> | N Zealand |
| 9. <i>Canthorhynchus bellus</i> , | <i>Broun, Man. N. Zeal. Coleopt., (1880), p. 526</i> | N Zealand |



1. *Diartiger spinipes*,
2. *Diartiger fossulatus*
3. *Lasinus spinosus*,
4. *Pselaphus Lewisii*,
5. *Batrisus antennatus*,
6. *Triomicrus simplex*,
7. *Batrisus pilosus*,
8. *Bythinus glabratus*,
9. *Euplectus trisulcicollis*,

Sharp, *Trans. Ent. Soc.*, (1883), p. 331.
 Sharp, *Trans. Ent. Soc.*, (1883), p. 330.
 Sharp, *Trans. Ent. Soc.*, (1874), p. 106.
 Sharp, *Trans. Ent. Soc.*, (1883), p. 329.
 Weise, *Deutsche Ent. Zeit.*, (1877), p. 97.
 Sharp, *Trans. Ent. Soc.*, (1883), p. 326.
 Sharp, *Trans. Ent. Soc.*, (1883), p. 310.
 Rye, *Ent. Mo. Mag.*, VII, (1870), p. 33.
 Brown, *Man. N. Zeal. Coleopt.*, (1880), p. 140.

Japan
 Japan.
 Japan
 Japan
 Japan
 Japan
 Japan
 England
 N. Zealand



1.

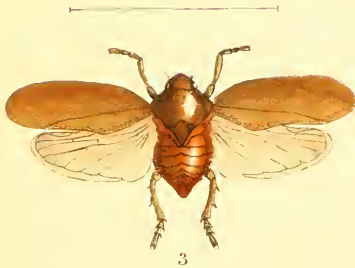
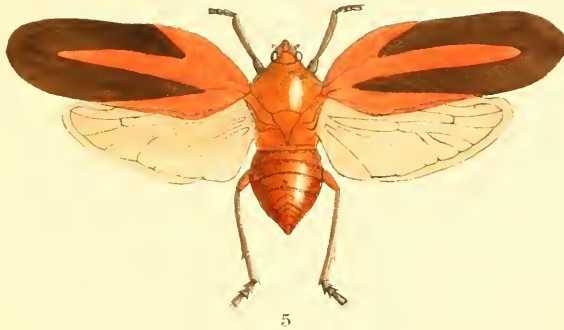
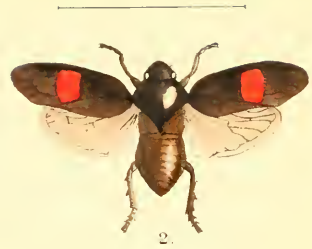
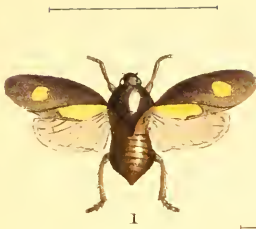


2.

1 *Tosena splendida*,
 2 *Tosena albata*,
 M. Horner-Fisher, del et lith

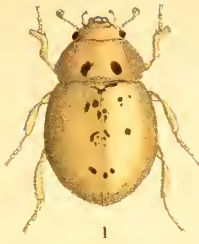
Distant, Ent. Mo. Mag. XV, (1878), p. 76
Distant, Trans. Ent. Soc., (1878), p. 175

Assam.
 N. W. Himalaya.
 Mintern, Bros. imp.



1. *Tomaspis binotata*, *Distant, Trans Ent. Soc., (1878), p 177.*
 2. *Tomaspis conspicua*, *Distant, Trans Ent. Soc., (1878), p 176.*
 3. *Tomaspis modesta*, *Distant, Trans Ent. Soc., (1878), p 176.*
 4. *Tomaspis Monteironis*, *Distant, Trans. Ent. Soc., (1878), p 176.*
 5. *Sphenorhina grandis*, *Distant, Trans. Ent. Soc., (1878), p 179.*

W Africa
 Lake Nyassa
 W Africa.
 Delagoa Bay.
 New Grenada



1



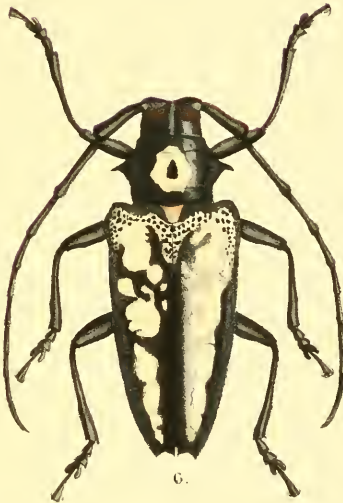
3.



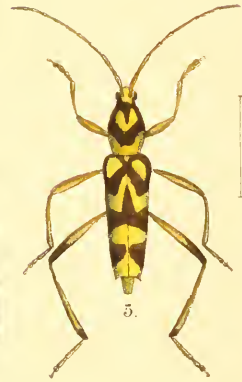
2.



4



6.



5.



7



8



9

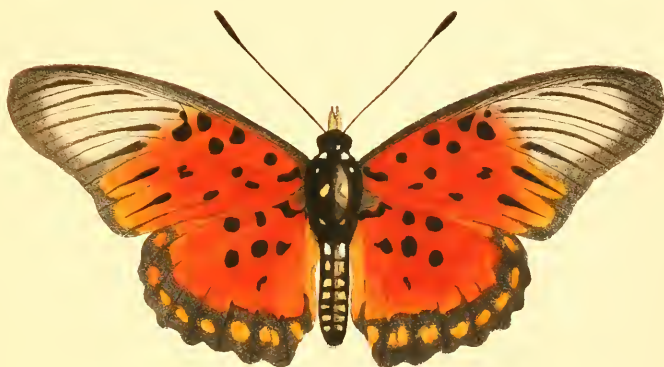
1. *Chærodes lætus*, *Broun, Man. New Zeal. Coleopt.*, I, (1880), p. 358. New Zealand
 2. *Ulonotus aberrans*, *Broun, Man. New Zeal. Coleopt.*, I, (1880), p. 189. New Zealand
 3. *Calliphenges cuprascens*, *Waterhouse, Ann. & Mag. Nat. Hist.*, V, (1880), p. 296. Ecuador
 4. *Clytus podagricus*, *White, Cat. Coleopt. in Brit. Mus.*, VIII, (1855), p. 254. St Domingo.
 5. *Clytus protogenes*, *Newman, The Entomologist*, I, (1842), p. 246. Philippine Is.
 6. *Megacriodes Forbesii*, *Waterhouse, Ann. & Mag. Nat. Hist.*, VII, (1881), p. 408. Sumatra.
 7. *Anchomenus Batesi*, *Broun, Man. New Zeal. Coleopt.*, I, (1880), p. 21. New Zealand.
 8. *Anchomenus parabilis*, *Broun, Man. New Zeal. Coleopt.*, I, (1880), p. 20. New Zealand.
 9. *Calathus? deformipes*, *Broun, Man. New Zeal. Coleopt.*, I, (1880), p. 19. New Zealand.



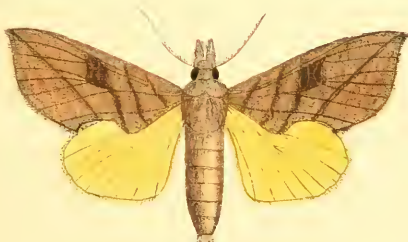
2



3.



1



4



5.

1. *Pseudacraea Colvillei*, *Butler, Ann & Mag Nat. Hist., XIV, (1884), p. 123.*
2. *Rusicada diversalis*, *Moore, Proc. Zool. Soc., (1883), p. 21.*
3. *Arthisma scissuralis*, *Moore, Proc. Zool. Soc., (1883), p. 20.*
4. *Calpe bicolor*, *Moore, ♂, Proc. Zool. Soc., (1883), p. 19.*
5. *Cleosis fasciata*, *Moore, Proc. Zool. Soc., (1883) p. 15*

M. Horman Fisher, del et lith.

Natal.
Singapore.
Singapore.
Punjab.
Borneo.
Museum Proc. imp.



1.



2.



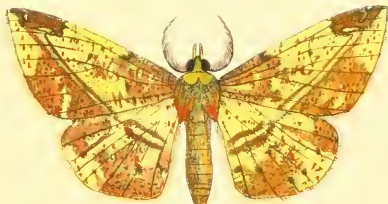
3.



4.



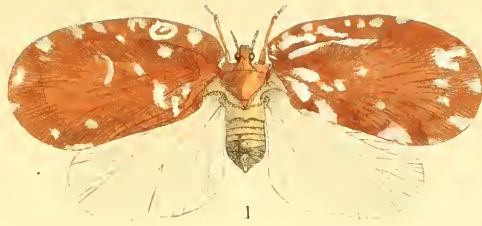
5.



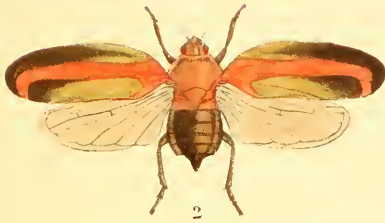
6.

1. *Lagyra megaspila*, Moore, *Proc. Zool. Soc.*, (1867), p. 616.
2. *Anisodes semilaria*, Moore, *Proc. Zool. Soc.*, (1867), p. 641.
3. *Anisodes pallivittata*, Moore, *Proc. Zool. Soc.*, (1867), p. 641.
4. *Geometra dentisignata*, Moore, *Proc. Zool. Soc.*, (1867), p. 636.
5. *Geometra vittata*, Moore, *Proc. Zool. Soc.*, (1867), p. 636.
6. *Cimicodes cruentaria*, Moore, *Proc. Zool. Soc.*, (1867), p. 616.

Bengal.
 Bengal.
 Bengal.
 Darjeeling.
 Bengal.
 Bengal.



1



2



3



4



5



6

- | | |
|---|----------------|
| 1. <i>Phromnia rubicunda</i> , <i>Distant, Ann. & Mag. Nat. Hist.</i> , XI, (1883), p. 171. | Tenasserim |
| 2. <i>Sphenorhina bogatana</i> , <i>Distant, Trans. Ent. Soc.</i> , (1878), p. 179. | Bogota. |
| 3. <i>Clonia lurida</i> , <i>Walker, List, Hom. Ins. Brit. Mus. Suppl.</i> , (1858), p. 60. | Ceram. |
| 4. <i>Aphæna chionæma</i> , <i>Butler, Ann. & Mag. Nat. Hist.</i> , IX, (1852), p. 127. | Sumatra |
| 5. <i>Platyleura signifera</i> , <i>Walker, List, Hom. Ins. Brit. Mus.</i> , I, (1850), p. 7. | S. Africa |
| 6. <i>Platyleura fulvigera</i> , <i>Walker, List, Hom. Ins. Brit. Mus.</i> , I, (1850), p. 9. | Philippine Is. |



1.



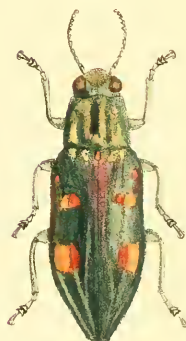
2.



3.



5.



6.



4.

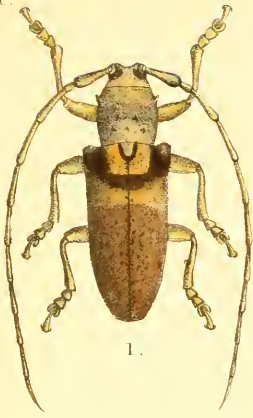


7.

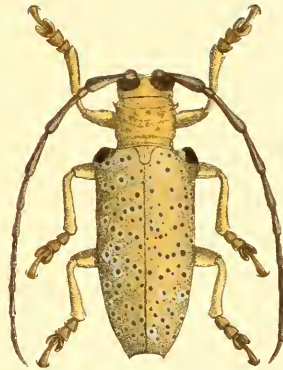


8.

1. *Adoxia vulgaris*, *Brown, Man. N. Zeal. Coleopt.*, (1880), p. 632. New Zealand
 2. *Paraphylax squamiger*, *Brown, Man. N. Zeal. Coleopt.*, (1880), p. 355. New Zealand
 3. *Helota africana*, *Oliv. Ann. & Mag. Nat. Hist.*, XIII, (1884), p. 479. Angola
 4. *Helota semifulva*, *Ritsema, Notes Leyden. Mus.*, III, (1881), p. 80. Java
 5. *Heterorhina malayana*, *Wallace, Trans. Ent. Soc.*, V, (1868), p. 525. Penang
 6. *Chrysodema Lambii*, *Saunders, Trans. Ent. Soc.*, V, (1867), p. 510. Penang
 7. *Gonophora Wallacei*, *Baly, Cat. Hosp. Brit. Mus.*, (1858), p. 109. Borneo
 8. *Corcebus Pascoei*, *Saunders, Trans. Ent. Soc.*, V, (1867), p. 518. Penang.



1.



2.



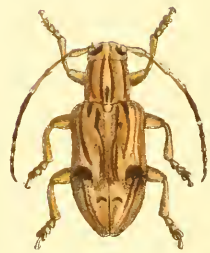
3.



4.



5.

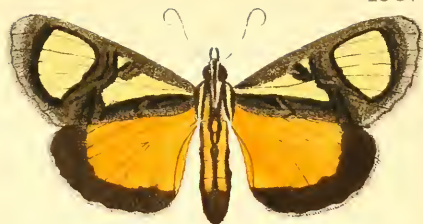


6.

1. *Symphyletes torquatus*, *Pascoe, Ann. & Mag. Nat. Hist.*, XV, (1875), p. 71. Queensland.
 2. *Rhytiphora argus*, *Pascoe, Journ. Linn. Soc. Lond.*, IX, (1867), p. 302. Australia
 3. *Agnia eximia*, *Pascoe, Ann. & Mag. Nat. Hist.*, V, (1860), p. 120. Molucca
 4. *Cereopsius tricinctus*, *Pascoe, Trans. Ent. Soc.*, 3, III, (1866), p. 239. Batchian
 5. *Penthea scenica*, *Pascoe, Trans. Ent. Soc.*, 3, I, (1863), p. 540. Australia
 6. *Xynenon larvatus*, *Pascoe, Ann. & Mag. Nat. Hist.*, II, (1878), p. 376. Andaman Is.



3.



2.



1.

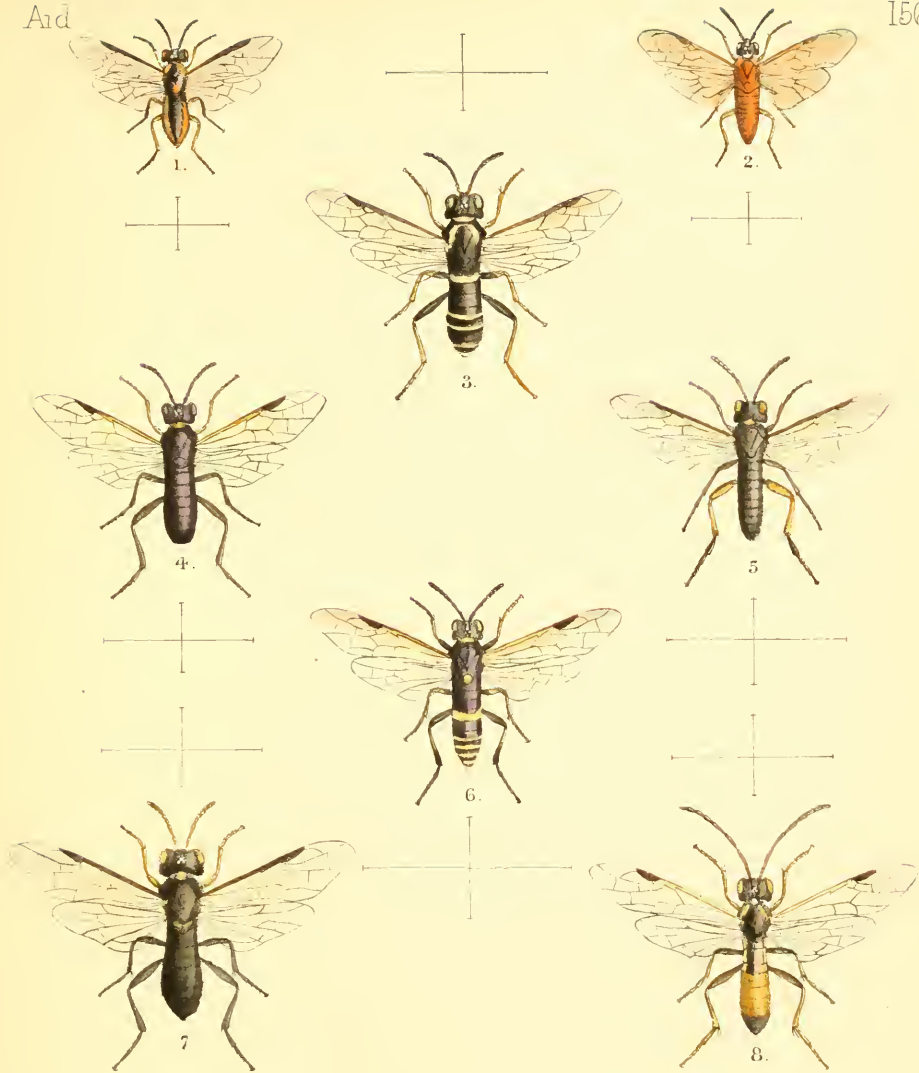


4.

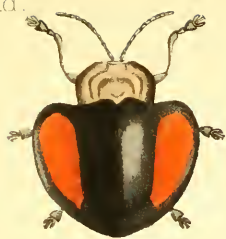


5.

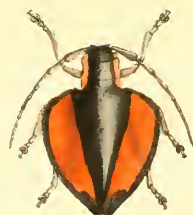
1. *Cocytia veitchii*, Butler, *Trans. Ent. Soc.*, (1884), p. 352. Batchuan.
 2. *Ægocera tricolor*, Druce, *Ent. Mo. Mag.*, XX, (1883), p. 155. E. Africa.
 3, 4. *Emesia grandis*, Druce, *Ent. Mo. Mag.*, XVI, (1880), p. 268. W. Africa
 5. *Eusemia Hornimani*, Druce, *Ent. Mo. Mag.*, XVI, (1880), p. 269. W. Africa.
 M. Horman-Fisher del et lith. Mintern. Inces. imp.



1. *Athalia maritima*, Kirby, *Ent. Month. Mag*, XX, (1884), p. 215. Greece.
 2. *Hylotoma fumipennis*, Smith, 2nd Yarkand Miss. Hymen., (1878), p. 18. Punjab.
 3. *Allantus similimus*, Smith, 2nd Yarkand Miss. Hymen., (1878), p. 19. Punjab.
 4. *Allantus terminalis*, Smith, 2nd Yarkand Miss. Hymen., (1878), p. 19. Kashmir.
 5. *Allantus providus*, Smith, 2nd Yarkand Miss. Hymen., (1878), p. 18. Punjab.
 6. *Allantus multicolor*, Smith, 2nd Yarkand Miss. Hymen., (1878), p. 18. Punjab.
 7. *Macrophya opposita*, Smith, 2nd Yarkand Miss. Hymen., (1878), p. 19. Kashmir.
 8. *Tenthredo simulata*, Smith, 2nd Yarkand Miss. Hymen., (1878), p. 19. Kashmir.



1.



2.



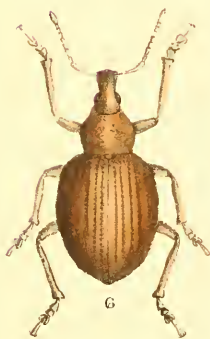
3



4.



5.



6

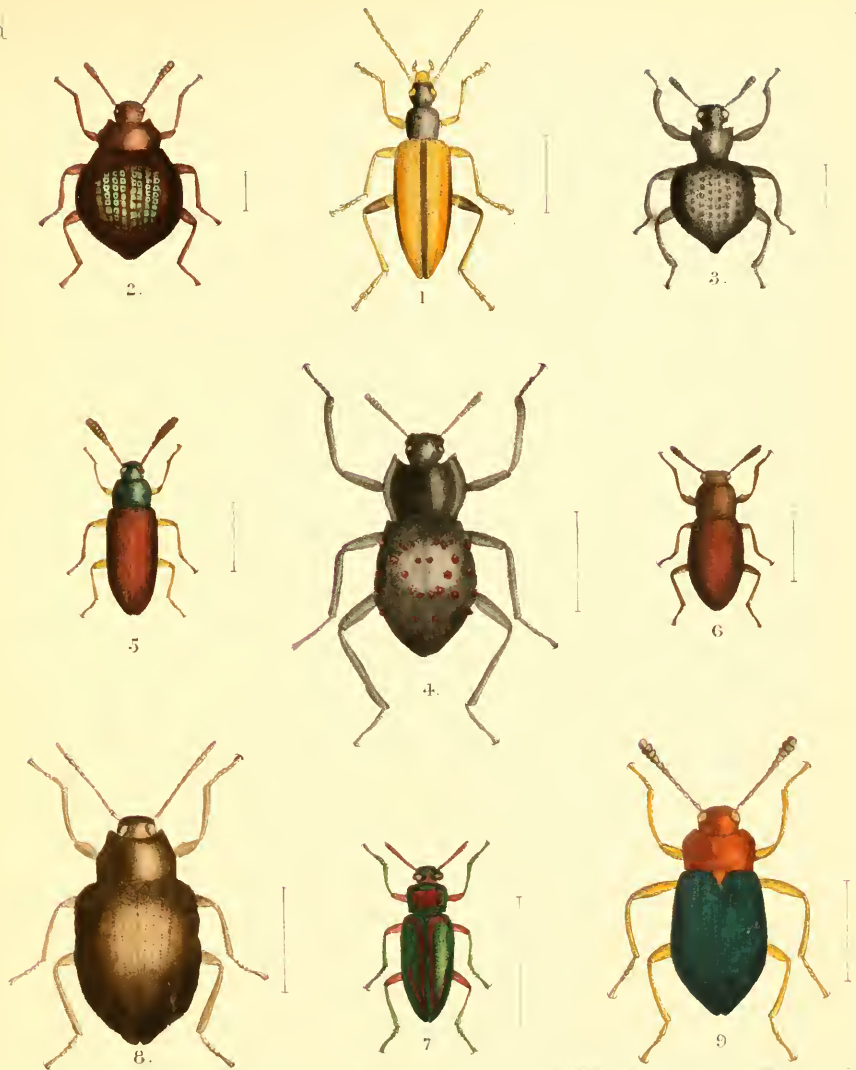


7.



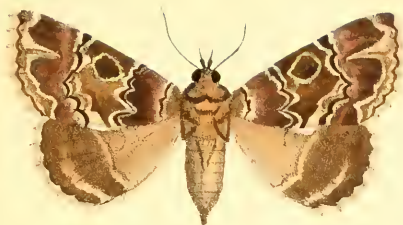
8.

- 1 *Mesomphalia latissima*, Baly, *Trans. Ent. Soc.*, (1872), p. 68. Ecuador
 2 *Ites plagiatus*, Waterhouse, *Ann. & Mag. Nat. Hist.*, V, (1880), p. 298. Ecuador.
 3 *Imesisternus lotor*, Pascoe, *Proc. Ent. Soc. Lond.*, (1859), p. 84. Batchian
 4 *Rhytiphora Dallasia*, Pascoe, *Ann. & Mag. Nat. Hist.* IV (1869) p. 207. W. Australia
 5 *Dioristus albolateralis*, Waterhouse, *Ann. & Mag. Nat. Hist.*, X, (1882), p. 47. Madagascar
 6 *Lysizone alternata*, Pascoe, *Journ. Linn. Soc. Lond.*, X, (1870), p. 486. Nicol Bay.
 7 *Lipothyrea chloris*, Pascoe, *Ann. & Mag. Nat. Hist.*, IX, (1882), p. 375. E. Australia.
 8 *Amphialus turgidus*, Pascoe, *Ann. & Mag. Nat. Hist.* XI, (1883), p. 127. Ceylon.

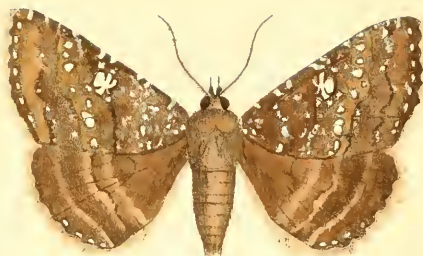


1. *Chromomæa picta*, Pascoe, *Journ. of Ent.*, II, (1866), p. 491. Queensland.
2. *Immedia occulta*, Pascoe, *Ann. & Mag. Nat. Hist.*, IX, (1882), p. 33. Bahia.
3. *Diopethes arachnoides*, Pascoe, *Ann. & Mag. Nat. Hist.*, IX, (1882), p. 33. Bahia.
4. *Phymæus pustulosus*, Pascoe, *Ann. & Mag. Nat. Hist.*, XI, (1883), p. 440. Ceylon.
5. *Enomia femorata*, Pascoe, *Ann. & Mag. Nat. Hist.*, XI, (1883), p. 441. Para.
6. *Gnesis helopioides*, Pascoe, *Journ. of Ent.*, II, (1865), p. 478. Mantchuina.
7. *Calydonis refulgens*, Pascoe, *Ann. & Mag. Nat. Hist.*, IX, (1882), p. 31. Para.
8. *Alymon prolatus*, Pascoe, *Journ. of Ent.*, II, (1865), p. 484. Natal.
9. *Diestica viridipennis*, Pascoe, *Proc. Ent. Soc. Lond.*, (1868), p. 12. Amazons.





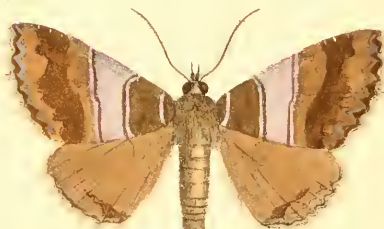
1.



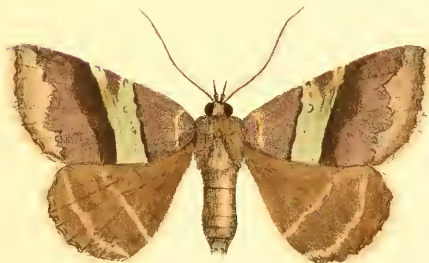
2.



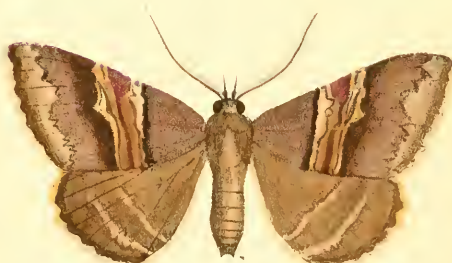
3.



4.



5.

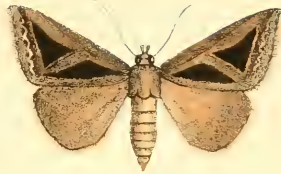


6.

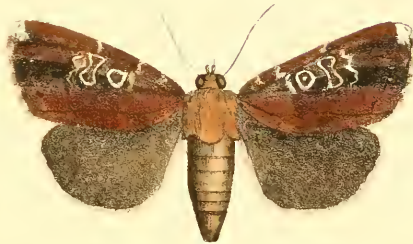
- 1 *Sypna complicata*, *Butler Ann. & Mag. Nat. Hist.*, V, (1880), p. 389. Madagascar.
 2 *Sypna constellata*, *Moore, Proc. Zool. Soc. Lond.*, (1883), p. 24. N W India.
 3 *Sypna brunnea*, *Moore, Descr. Lep. Coll. Atkinson*, (1882), p. 167. Darjeeling.
 4 *Sypna cyanivitta*, *Moore, Proc. Zool. Soc. Lond.*, (1867), p. 70. Bengal.
 5 *Sypna kirbyi*, *Butler, Trans. Ent. Soc.*, (1881), p. 209. Darjeeling.
 6 *Sypna prunosa*, ♂, *Moore, Proc. Zool. Soc. Lond.*, (1883), p. 25. Darjeeling.



1.



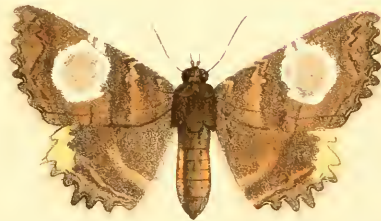
2.



3.

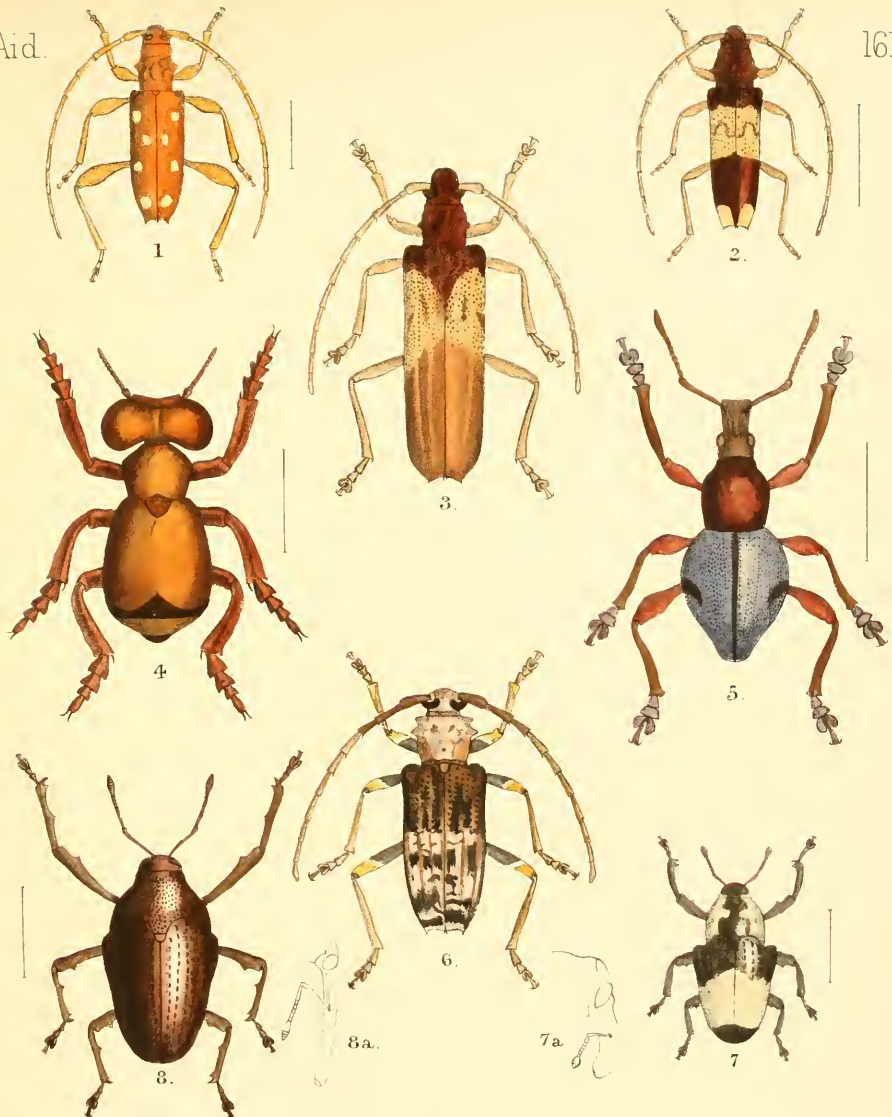


4.



5.

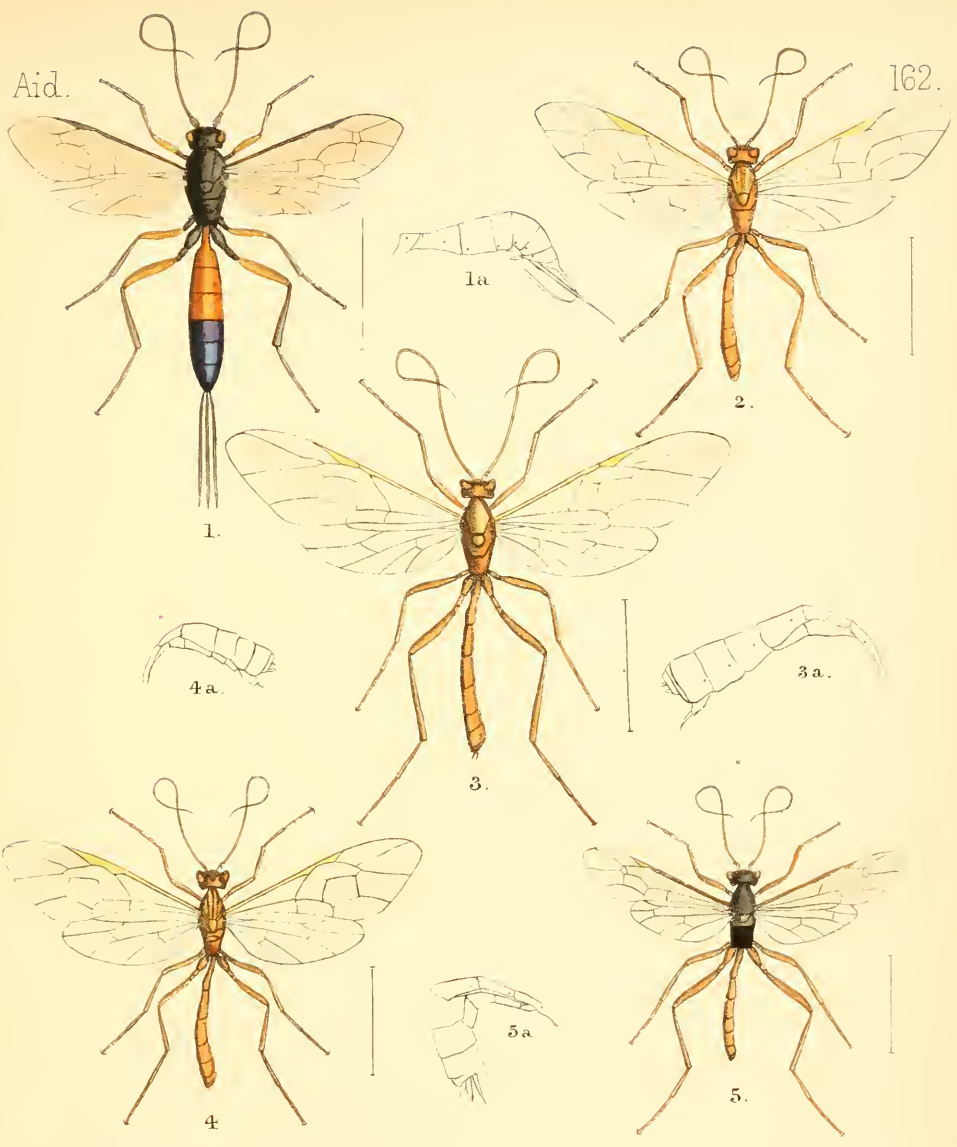
- 1 *Toxocampa cucullata*, Moore, *Descr. of Lep. in Coll. Atkinson*, II (1882), p. 159. N. W. Himalayas
 2 *Chalciopé disjuncta*, Moore, *Descr. of Lep. in Coll. Atkinson*, II (1882), p. 171. Bengal.
 3 *Callyna semivitta*, Moore, *Descr. of Lep. in Coll. Atkinson*, II (1882), p. 161. Darjeeling
 4 *Sypna renisigna*, ♂, Moore, *Proc. Zool. Soc. Lond.*, (1883), p. 25. Khasia Hills.
 5 *Daddala quadrisignata*, Walker, *Cat. Lep. Het. Brit. Mus.*, XXXIII, (1865), p. 974. India.



1. *Thoris eburifera*, *Pascoe, Ann. & Mag. Nat. Hist.*, XIX, (1867), p. 317. E. Australia.
2. *Phoracantha hospita*, *Pascoe, Journ. of Ent.*, II, (1864), p. 232. Queensland.
3. *Tryphocaria Mastersii*, *Pascoe, Ann. & Mag. Nat. Hist.*, XV, (1875), p. 61. Melbourne.
4. *Meloetyphlus fuscus*, *Waterh., Ent. Mo. Mag.*, IX, (1872), p. 32. E. Peru.
5. *Siteutes caeruleatus*, *Pascoe, Cistula Ent.*, II, (1881), p. 594. New Guinea.
6. *Demelius semirugosus*, *Waterh., Ent. Mo. Mag.*, XI, (1874), p. 127. Queensland.
7. *Alcides trifidus*, *Pascoe, Journ. Linn. Soc. Lond.*, X, (1870), p. 460. Cambodia.
8. *Alcides crassus*, *Pascoe, Ann. & Mag. Nat. Hist.*, X, (1882), p. 450. Andaman Is.

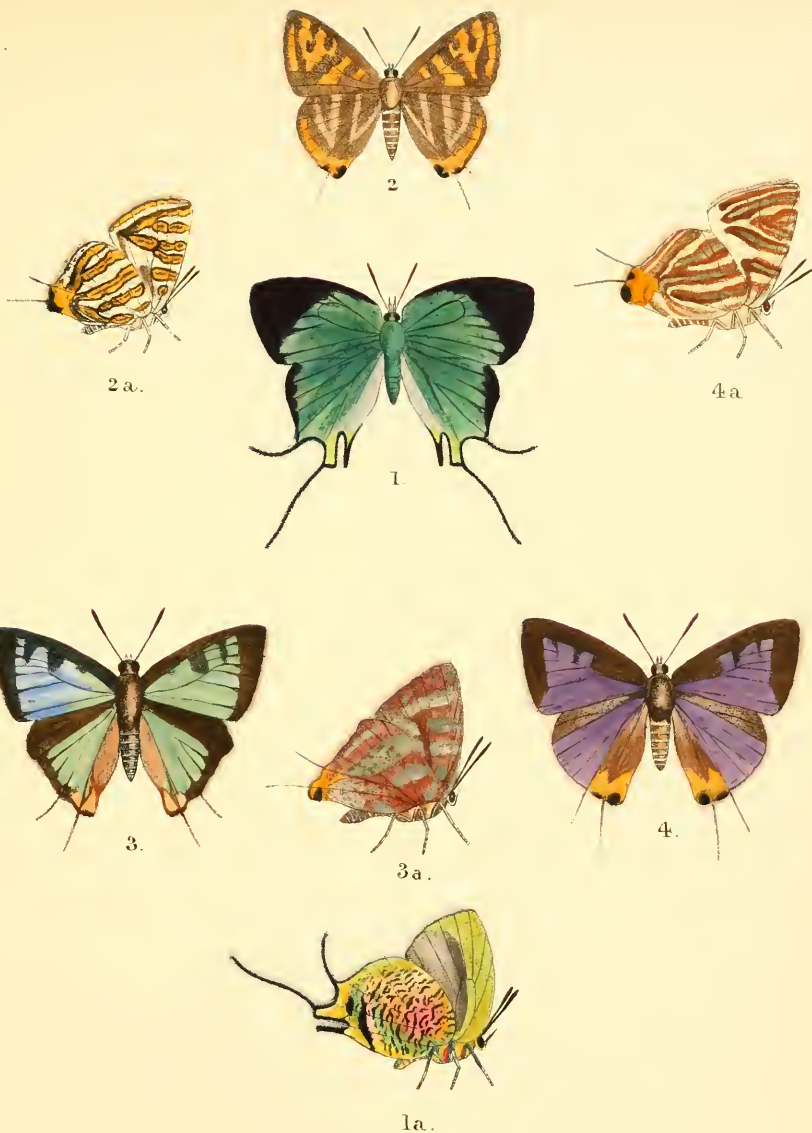
Aid.

162.

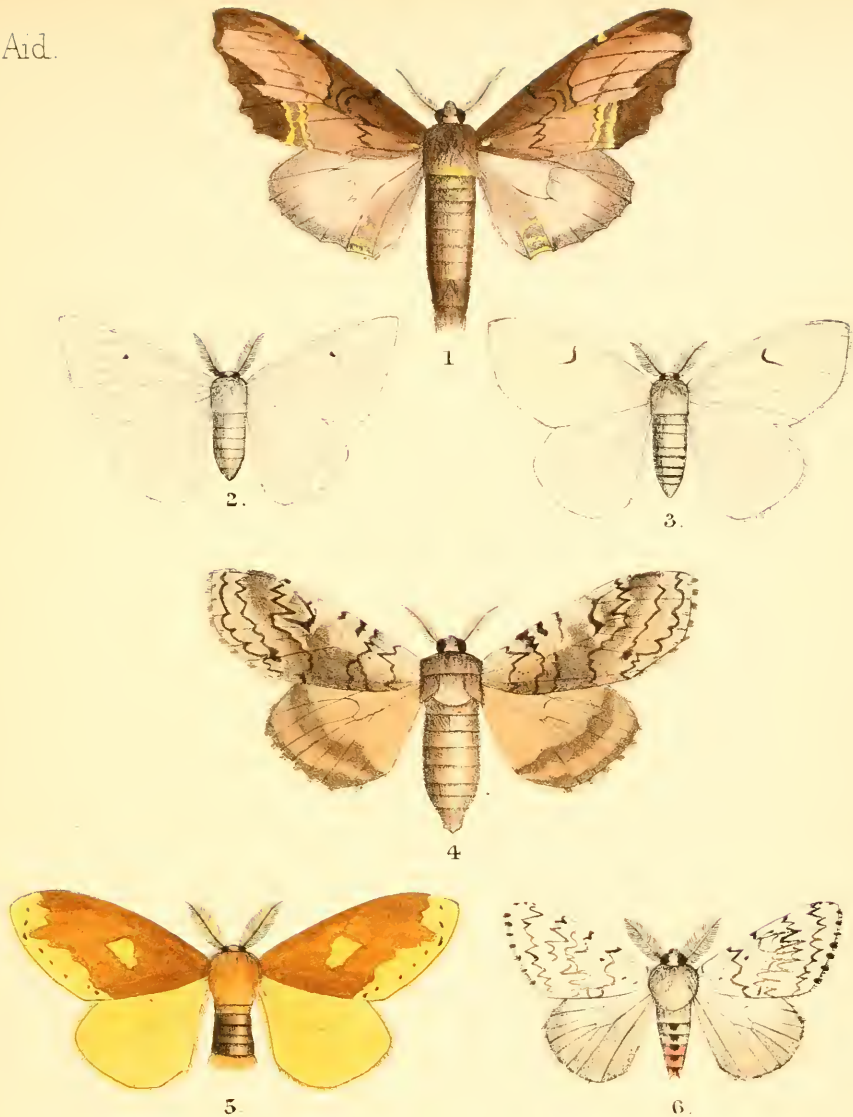


1. *Cryptus insidiator*, Smith, 2nd Yarkand Mission; Hymen., (1878), p. 21. Kashmir
 2. *Paniscus quadrilineatus*, Smith, 2nd Yarkand Mission; Hymen., (1878), p. 21. Yarkand
 3. *Ophion dentatus*, Smith, 2nd Yarkand Mission; Hymen., (1878), p. 22. Kashmir
 4. *Ophion albopictus*, Smith, 2nd Yarkand Mission; Hymen., (1878), p. 22. Yarkand
 5. *Campoplex longipes*, Smith, 2nd Yarkand Mission; Hymen., (1878), p. 21. Kashmir

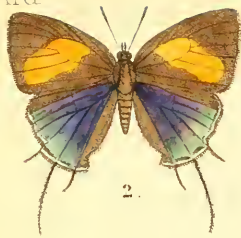




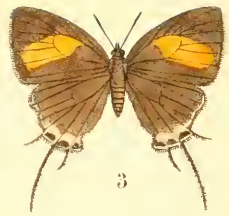
1. *Theritas Oakesii*, *Butler, Ann. & Mag. Nat. Hist.*, XIV, (1884), p. 267. Colombia.
 2. *Aphnæus tigrinus*, *Moore, Journ. Asiat. Soc. Beng.*, LIII, (1884), p. 25. Bengal
 3. *Aphnæus orcas*, *Drury, Illustrations*, III, (1782), p. 46. W. Africa
 4. *Aphnæus himalayana*, *Moore, Journ. Asiat. Soc. Beng.*, LIII, (1884), p. 26. Nepal.



1. *Zaranga pannosa*, Moore, *Trans. Ent. Soc. Lond.*, (1884), p. 357. Umballa.
 2. *Redoa cygna*, ♀, Moore, *Proc. Zool. Soc. Lond.*, (1879), p. 401. Bengal
 3. *Ocinara comma*, Hutton, *Trans. Ent. Soc. Lond.*, (1865), p. 330. Darjiling
 4. *Dasychira strigata*, ♀, Moore, *Desc. Lepid. in Coll. Atkinson*, I (1879), p. 58. Simla.
 5. *Chærotricha marginata*, ♀, Moore, *Desc. Lepid. in Coll. Atkinson*, I (1879), p. 49. Darjiling.
 6. *Lymantria similis*, ♂, Moore, *Proc. Zool. Soc. Lond.*, (1879), p. 402. Calcutta.



2.



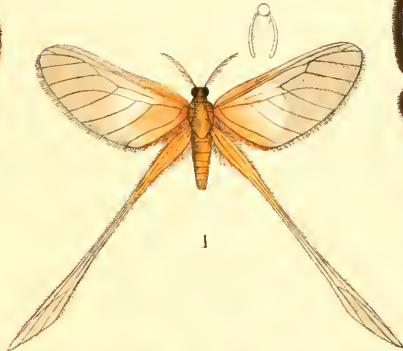
3.



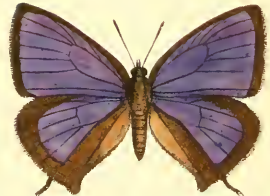
3a.



4.



1.



5.



4a.



6.

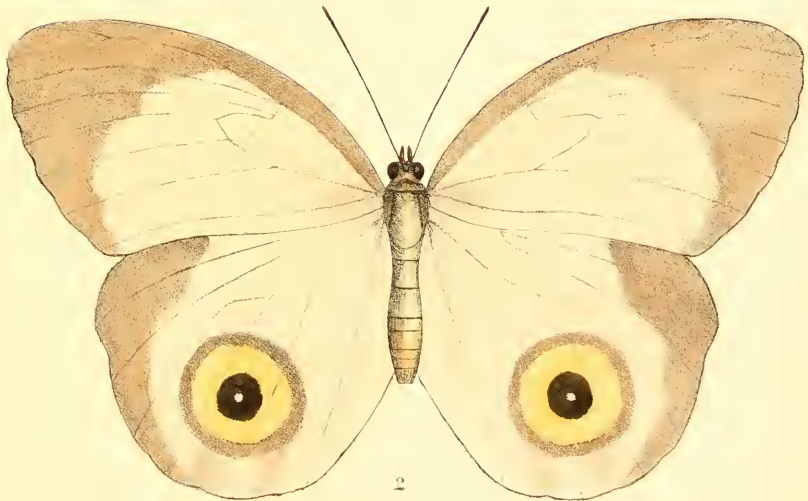


5a.

1. *Pedoptilia nemopteridea*, *Bull. Ann. & Mag. Nat. Hist.* XVI, (1885), p. 341. Cape Coast.
 2, 3 *Drupadia lisis*, *Fabricius, Mantissa Insc.* II, (1787), p. 65. Pulo Condor.
 4 *Darasans newara*, *Moore, Journ. Asiat. Soc. Beng.* LIII, (1884), p. 42. Nepal.
 5 *Saturia canarica*, *Moore, Journ. Asiat. Soc. Beng.* LIII, (1884), p. 29. S. India.
 6 *Lampides Goodenoti*, *Butler, Proc. Zool. Soc. Lond.*, (1876), p. 252. New Hebrides.



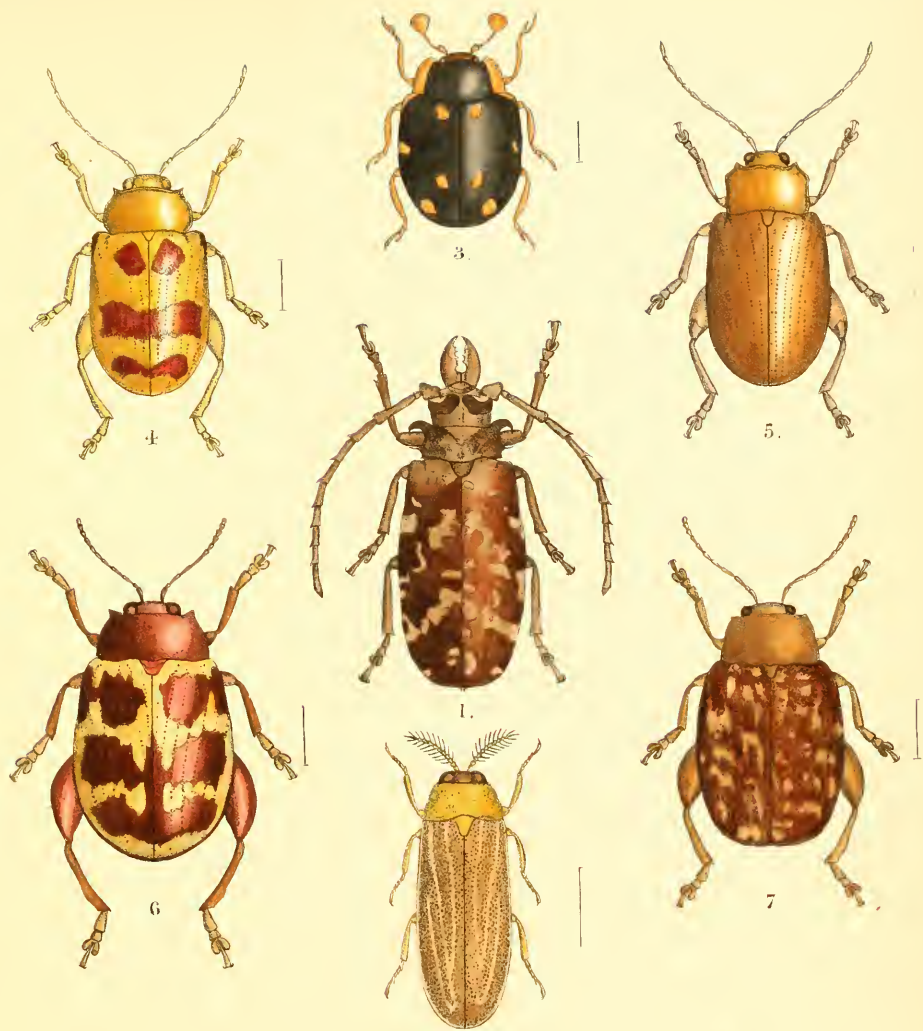
1



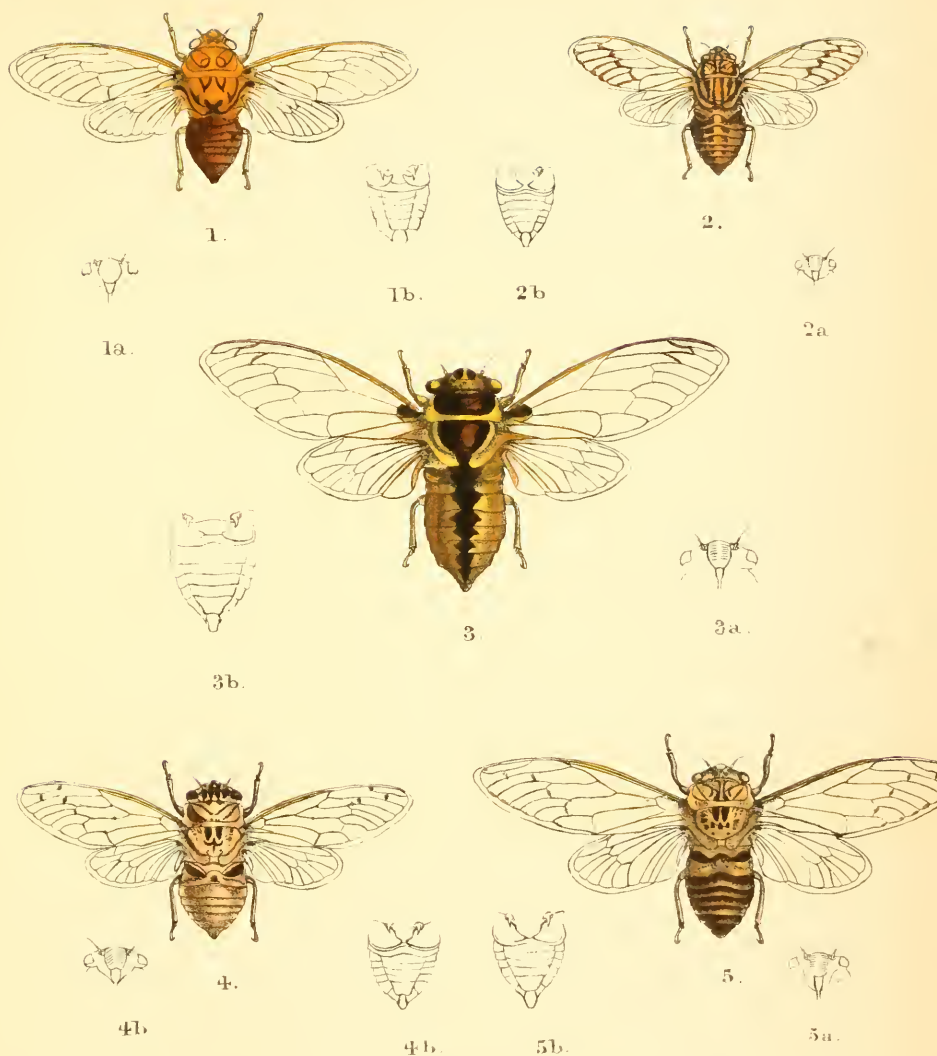
2

1. *Papilio albolineatus*, Forbes, *Nat Wand in E. Archipel.*, 1885, p. 275. Bonnet.
 2. *Tenaris buruensis*, Forbes, *Nat Wand in E. Archipel.*, 1885, p. 411. Bonnet.

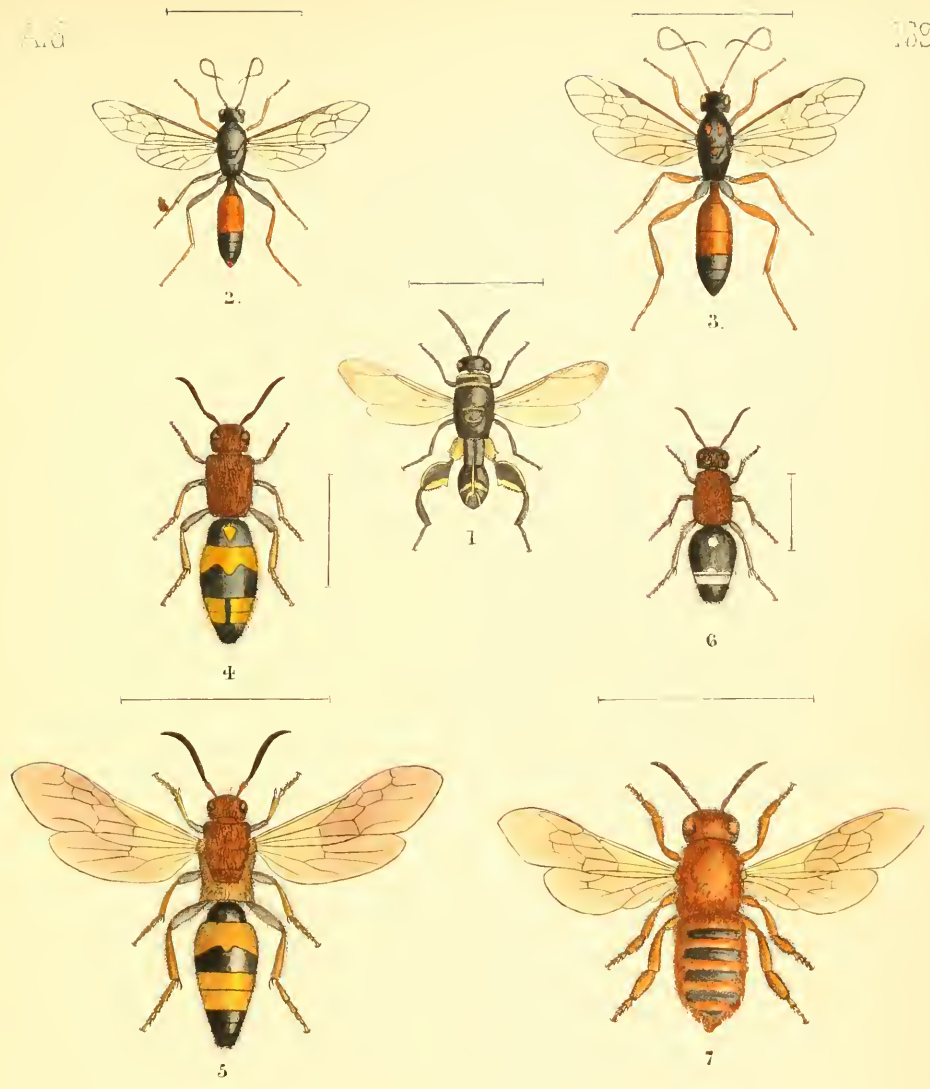




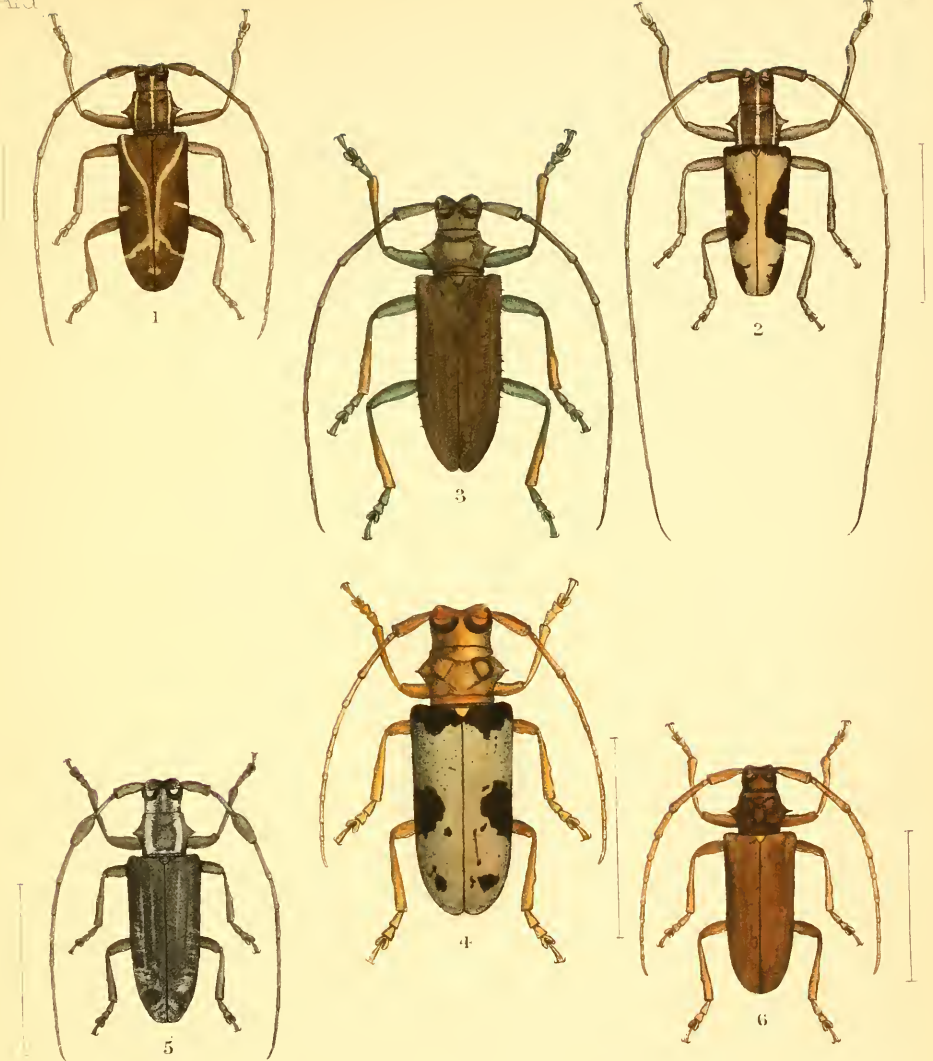
- 1 *Tritoses Palmi*, *Hesper. Ann. & Mag. Nat. Hist. XI* (1843) p 306 Sierra Leone.
 2 *Diplocladon Hasseltii*, *Gorham, Notes from the Leyden Mus.*, (1883) p 6 Sumatra.
 3 *Monocoryna decempunctata*, *Gorham, Ann. Mus. C. d. S. N. Genova II*, (1885) p 529. Sumatra
 4 *Notozona elegans*, *Clark, Journ. of Ent.*, II, (1865), p 411. Mexico.
 5 *Notozona humilis*, *Clark, Journ. of Ent.*, II, (1865), p. 412. Mexico.
 6 *Notozona rufofusca*, *Clark, Journ. of Ent.*, II, (1865), p 412. Honduras
 7 *Notozona sparsa*, *Clark, Journ. of Ent.*, II, (1865), p 411. Mexico.



1. *Carineta obtusa* Walker, *Insecta Saurideriviana*, *Hemipt.* 1858, p. 14. Brazil.
 2. *Tympanoterpes elegans* Berg, *Anat. Soc. Cient. Arg.* XIV, 1888, p. 41. Argentine Republic.
 3. *Tympanoterpes arechavaletae*, Berg, *Bondist. An. Acad. Ind. (1884)*, p. 194. Uruguay.
 4. *Proarna capistrata* Distant, *Ent. Mo. Mag.* XXII, 1905, p. 60. Buenos Ayres.
 5. *Proarna pulverea* Oliv., Berg, *Anat. Soc. Cient. Arg.* XIV, 1888, p. 42. Brazil.



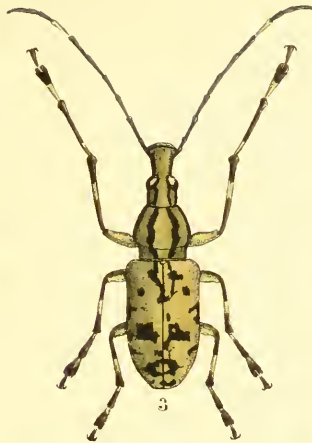
1. *Leucospis coxalis*, Kirby, *Ann. & Mag. Nat. Hist.*, XV, (1885), p. 243. Buenos Ayres.
 2. *Pompilus divisus*, Smith, *2nd Yarkand Mission, Hym.*, (1878), p. 15. Sind Valley.
 3. *Ichneumon bipustulatus*, Smith, *2nd Yarkand Mission, Hym.*, (1878), p. 20. Murree.
 4. 5. *Mutilla aurifex*, ♂, ♀, Smith, *Descr. New Sp. of Hym. in Brit. Mus.* (1879), p. 198. Bombay.
 6. *Mutilla rufitarsis*, Smith, *Descr. New Sp. of Hym. in Brit. Mus.* (1879), p. 199. India.
 7. *Megachile fulva*, Smith, *2nd Yarkand Mission, Hym.*, (1878), p. 4. Yarkand.



1. *Monohammus x-filum*, Bates, *Ent. Mo. Mag.*, XXI, (1884), p. 18. Gaboon.
 2. *Monohammus pictor*, Bates, *Ent. Mo. Mag.*, XXI, (1884), p. 17. Mt. Cameroons.
 3. *Batomena multispinis*, Bates, *Ent. Mo. Mag.*, XXI, (1884), p. 15. Mt. Cameroons.
 4. *Trichiana plagiata*, Bates, *Ent. Mo. Mag.*, XXI, (1884), p. 15. Mt. Cameroons.
 5. *Melanopolia farinosa*, Bates, *Ent. Mo. Mag.*, XXI, (1884), p. 16. Gaboon.
 6. *Noserocera tuberosa*, Bates, *Ent. Mo. Mag.*, XXI, (1884), p. 17. Mt. Cameroons.



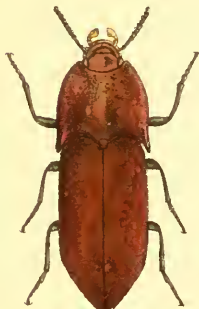
1



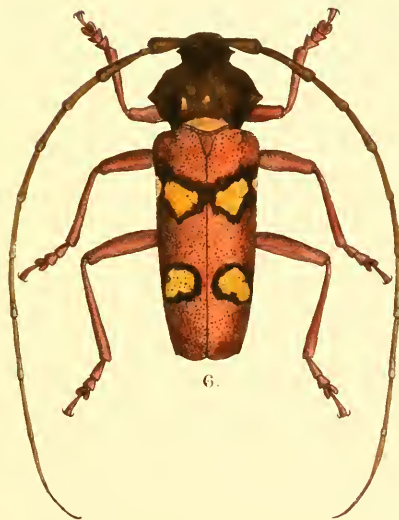
3



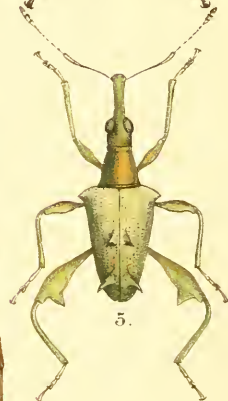
2



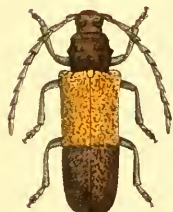
4.



6.



5.



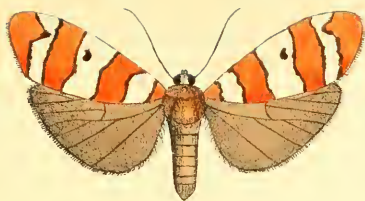
7.



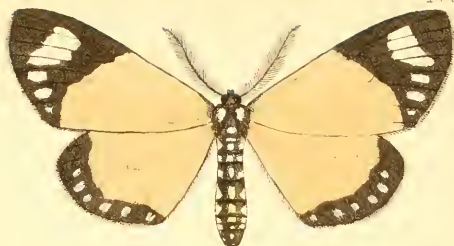
8

1. *Tophoderes annulatus*, *Waterh. Ann. & Mag. Nat. Hist.* (1875), p. 412. Madagascar.
2. *Diastatropis olivaceus*, *Waterh. Trans. Ent. Soc. Lond.*, (1877), p. 11. Madagascar.
3. *Mecocerus sulphureus*, *Waterh. Trans. Ent. Soc. Lond.*, (1876), p. 24. Andaman Is.
4. *Psorochroa granulata*, *Brown, Man. N. Zeal. Coleopt.*, II, (1881), p. 32. New Zealand.
5. *Ancistropterus prasinus*, *Brown, Man. N. Zeal. Coleopt.*, II, (1881), p. 58. New Zealand.
6. *Stenaspis plagiatus*, *Waterh. Trans. Ent. Soc. Lond.*, (1877), p. 12. Guatemala.
7. *Opsamates dimidiatus*, *Waterh. Trans. Ent. Soc. Lond.*, (1879), p. 265. Madagascar.
8. *Opsamates purpureipennis*, *Waterh. Trans. Ent. Soc. Lond.*, (1880), p. 60. Madagascar.





1



2.



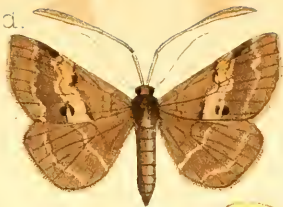
3.



5.

1. *Bizone rubrifasciata*, Druce, *Ent. Mo. Mag.*, XX, (1883), p.156. N. Celebes.
 2. *Aletus Monteironis*, Druce, *Ent. Mo. Mag.*, XX, (1883), p. 156. Delagoa Bay.
 3. *Amesia hyala*, Druce, *Proc. Zool. Soc. Lond.*, (1885), p. 518. Darjeeling.
 4. *Eusemia medeba*, Druce, *Ent. Mo. Mag.*, XVI, (1880), p.269. Old Calabar.
 5. *Eusemia opheltes*, Druce, *Proc. Zool. Soc. Lond.*, (1885), p. 518. N. Burmah.

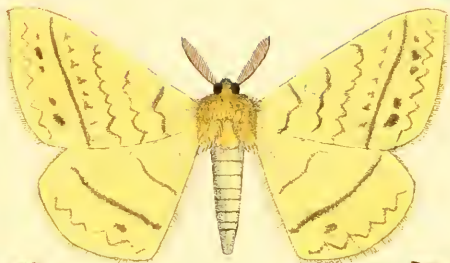




3.



4.



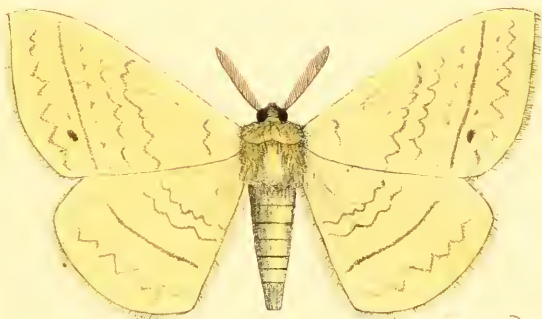
1.



5.



6.



2.



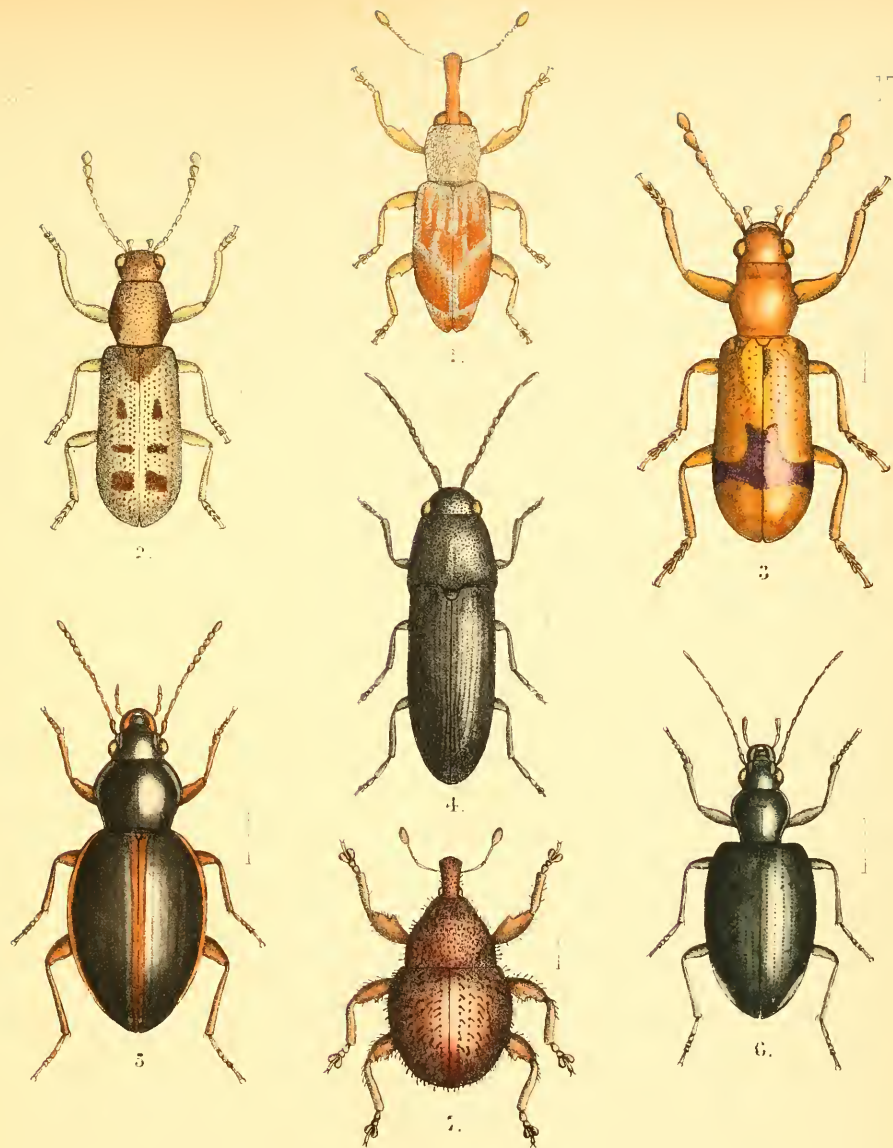
7.



8.

1. *Murlida fraterna*, ♂, Moore, *Trans. Ent. Soc.*, (1884), p. 371. Darjeeling.
2. *Muriida lineosa*, Walker, *Cat. Lep. Het. Brit. Mus.*, VI, (1855), p. 1440. Nepal.
3. *Mastigophora scopigeralis*, Moore, *Proc. Zool. Soc. Lond.*, (1867), p. 86. N. E. Bengal.
4. *Egnasia castanea*, Moore, *Lep. in Coll. Atkinson*, II, (1882), p. 184. Khasia Hills.
5. *Hypena umbripennis*, Moore, *Lep. in Coll. Atkinson*, II, (1882), p. 192. Khasia Hills.
6. *Hypena ophiuoides*, Moore, *Lep. in Coll. Atkinson*, II, (1882), p. 189. Khasia Hills.
7. *Rhynchina angulifascia*, Moore, *Lep. in Coll. Atkinson*, II, (1882), p. 188. N. W. Himalaya.
8. *Saraca pannosa*, Moore, *Lep. in Coll. Atkinson*, II, (1882), p. 182. Darjeeling.



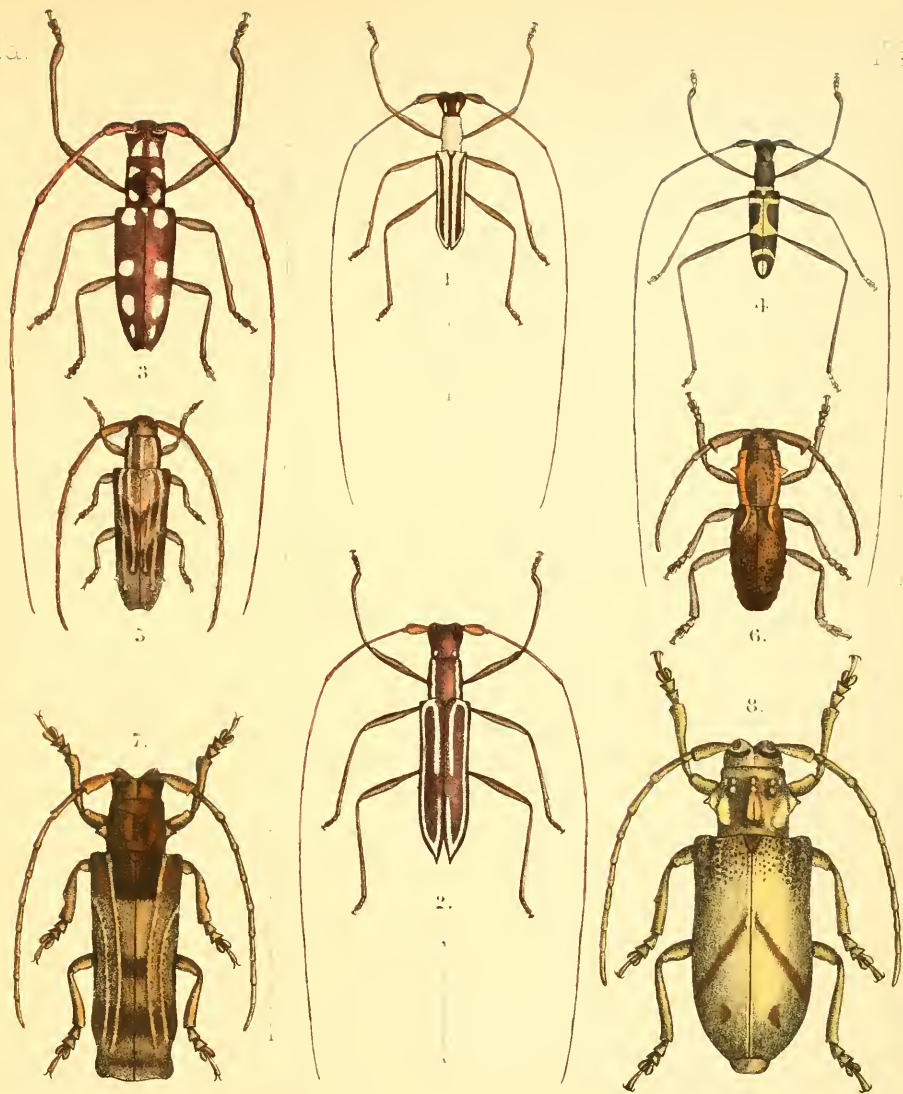


1. *Pachydon linearis*. *Brown, Man. N. Zeal. Coleopt.*, (1881), p. 705. N. Zealand.
2. *Phymatophæa testacea*. *Brown, Man. N. Zeal. Coleopt.*, (1881), p. 686. N. Zealand.
3. *Phymatophæa ignea*. *Brown, N. Zeal. Journ. of Science*, (1883), p. 375. N. Zealand.
4. *Melanus sculptus*. *Brown, Man. N. Zeal. Coleopt.*, (1881), p. 677. N. Zealand.
5. *Tropopterus patulus*. *Brown, Man. N. Zeal. Coleopt.*, (1881), p. 655. N. Zealand.
6. *Bembidium latiusculum*. *Brown, N. Zeal. Journ. of Science*, (1883), p. 225. N. Zealand.
7. *Paromalhia vestita*. *Brown, Man. N. Zeal. Coleopt.*, (1880), p. 497. N. Zealand.

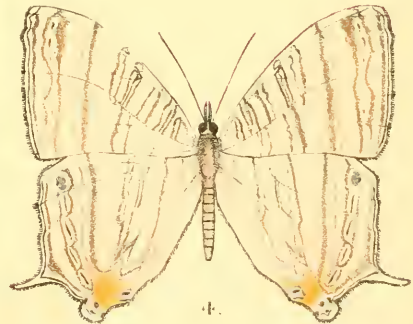
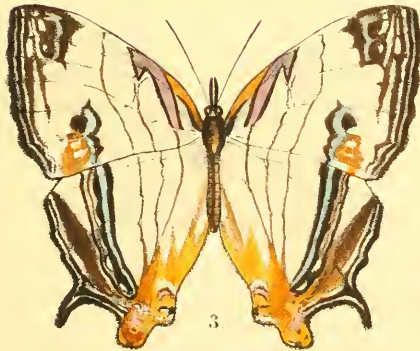
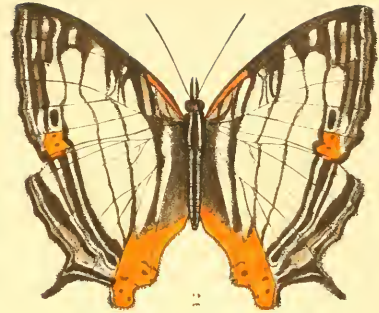
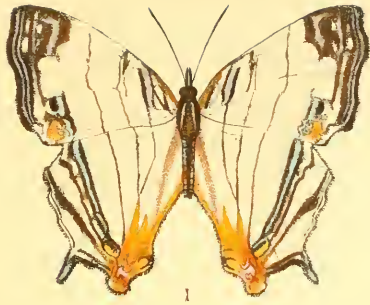
Maud Horman-fisher del et lith

Mintern Bros imp.

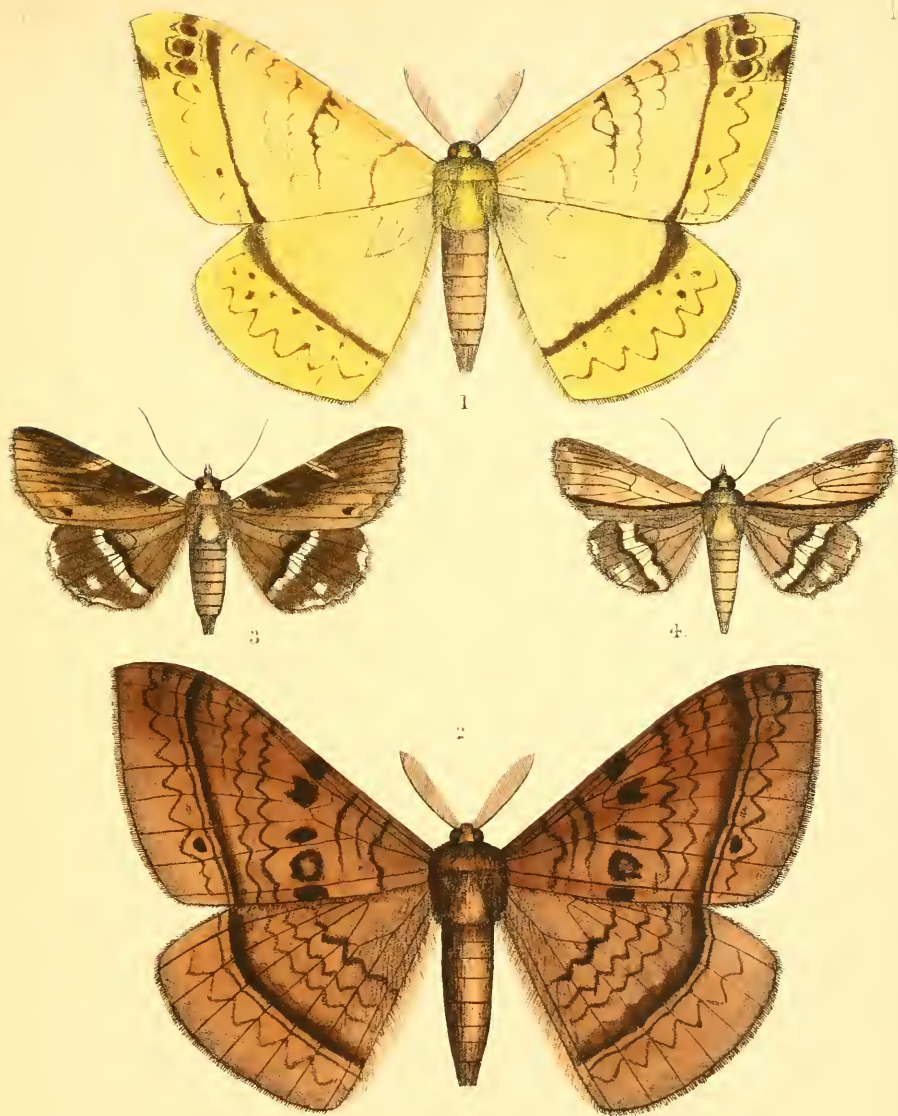




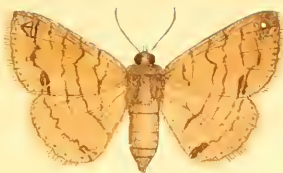
1, 2. *Cylindrepomus grammicus*, ♂, ♀, *Ann. & Mag. N. Hist.* V, (1860), p. 121. Waigiou.
 3. *Olenecamptus optatus*, *Pascoe, Proc. Zool. Soc.*, (1860), p. 253. Penang.
 4. *Cylindrepomus lætus*, *Pascoe, Trans. Ent. Soc. IV*, (1858), p. 241. Singapore.
 5. *Tanylamia melanura*, *Pascoe, Ann. & Mag. N. Hist. XVII*, (1886), p. 244. Madagascar.
 6. *Anexodus aquilus*, *Pascoe, Ann. & Mag. N. Hist. XVII*, (1886), p. 242. Borneo.
 7. *Thylactus longipennis*, *Pascoe, Ann. & Mag. N. Hist. XVII*, (1886), p. 242. W. Africa.
 8. *Chreostes Oberthürri*, *Pascoe, Ann. & Mag. N. Hist. XVII*, (1886), p. 243. Zambesi.



1. *Cyrestis Whitmei*, Butler, *Ann. & Mag. Nat. Hist.* XX, (1877), p. 352. Lifu.
 2. *Cyrestis irmæ*, Forbes, *Nat. Wand. in E. Archipel.* (1885), p. 274. Sumatra.
 3. *Cyrestis achates*, Butler, *Proc. Zool. Soc. Lond.*, (1885), p. 481. Mysol.
 4. *Cyrestis sericeus*, Butler, *Proc. Zool. Soc. Lond.*, (1865), p. 482. Borner.



- 1 *Eupterote gyra*, Swinhoe, *Proc. Zool. Soc. Lond.*, (1885), p. 462. Belgaum
 2 *Eupterote diabolica*, Swinhoe, *Proc. Zool. Soc. Lond.*, (1885), p. 303. Belgaum
 3 *Ercheia zygia*, Swinhoe, *Proc. Zool. Soc. Lond.*, (1885), p. 465. Poona
 4 *Ercheia zura*, Swinhoe, *Proc. Zool. Soc. Lond.*, (1885), p. 465. Bombay



2.



3.



1.



4.



5.

- 1 *Vanessa thomsoni*, Butler, *Ann. & Mag. Nat. Hist.*, XIX, (1881), p. 104. Brit Honduras?
 2 *Remigia congregata*, Walker, *Cat. Lep. Het. Brit. Mus.*, XV, (1858), p. 1847. W. Africa
 3 *Briarda conturbata*, Walker, *Proc. Nat. Hist. Soc. Glasgow*, I, (1869), p. 354. Congo.
 4 *Nyctemera apicalis*, Walker, *Cat. Lep. Het. Brit. Mus.*, II, (1854), p. 395. W. Africa
 5 *Arca discalis*, Walker, *Cat. Lep. Het. Brit. Mus.*, IV, (1855), p. 792. Natal



1



2



7



3



4



8

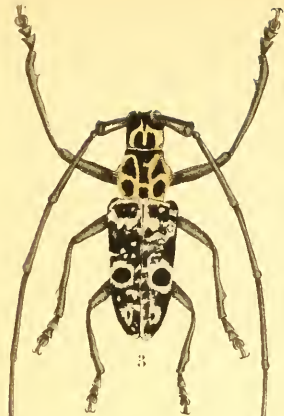


5

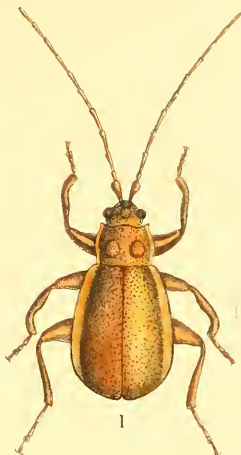


6

- 1 *Ypthima maifurata* ♂, Moore, *Journ. Asiat. Soc. Bengal*, (1884), p. 17. Decan.
 2 *Ypthima apicalis*, ♂, Moore, *Journ. Asiat. Soc. Bengal*, 1884, p. 17. Deyra Doon.
 3 *Ypthima howra*, ♂, Moore, *Journ. Asiat. Soc. Bengal*, (1884), p. 17. Java.
 4 *Ypthima howra*, ♂, Moore, *Journ. Asiat. Soc. Bengal*, 1884, p. 17. Calcutta.
 5 *Ypthima kasmira*, ♀, Moore, *Journ. Asiat. Soc. Bengal*, (1884), p. 17. Cashmir.
 6 *Ypthima avanta*, ♂, Moore, *Proc. Zool. Soc. Lond.*, (1884), p. 167. Cashmir.
 7 *Ypthima newara*, ♂, Moore, *Proc. Zool. Soc. Lond.*, (1884), p. 167. Nepal.
 8 *Ypthima nikaea*, ♀, Moore, *Proc. Zool. Soc. Lond.*, (1884), p. 167. W.W. Himalaya.



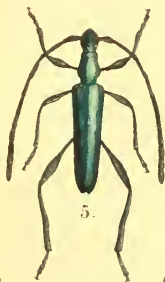
3



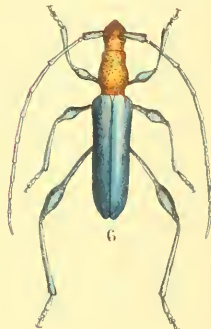
1



4



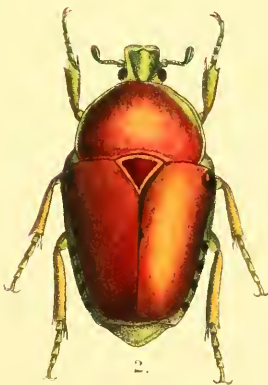
5



6



7

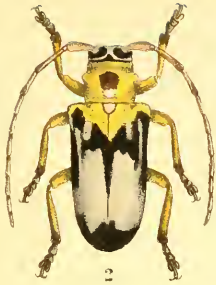


2



8

1. *Rhopalotoma tuberculata*, Clark, *Journ. of Ent.*, II, (1863), p. 394. New Grenada.
 2. *Cehidota splendens*, Waterh., *Trans. Ent. Soc. Lond.*, (1830), p. 59. Madagascar.
 3. *Pelagoderus meleagris*, Pascoe, *Trans. Ent. Soc. Lond.*, 3, III, (1866), p. 279. Tondano.
 4. *Chlidones lineolatus*, Waterh., *Trans. Ent. Soc. Lond.*, (1879), p. 321. Madagascar.
 5. *Promeces viridis*, Pascoe, *Journ. of Ent.*, II, (1863), p. 53. Natal.
 6. *Euporus ignicollis*, Pascoe, *Journ. of Ent.*, II, (1864), p. 297. Natal.
 7. *Polyzonus scalaris*, Pascoe, *Journ. of Ent.*, II, (1863), p. 53. Grahamstown.
 8. *Blepisanis Bohemani*, Pascoe, *Trans. Ent. Soc. Lond.*, I, IV, (1858), v. 257. Natal.



2



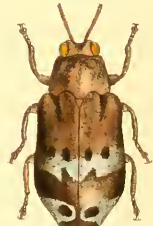
3



1



5



6



7

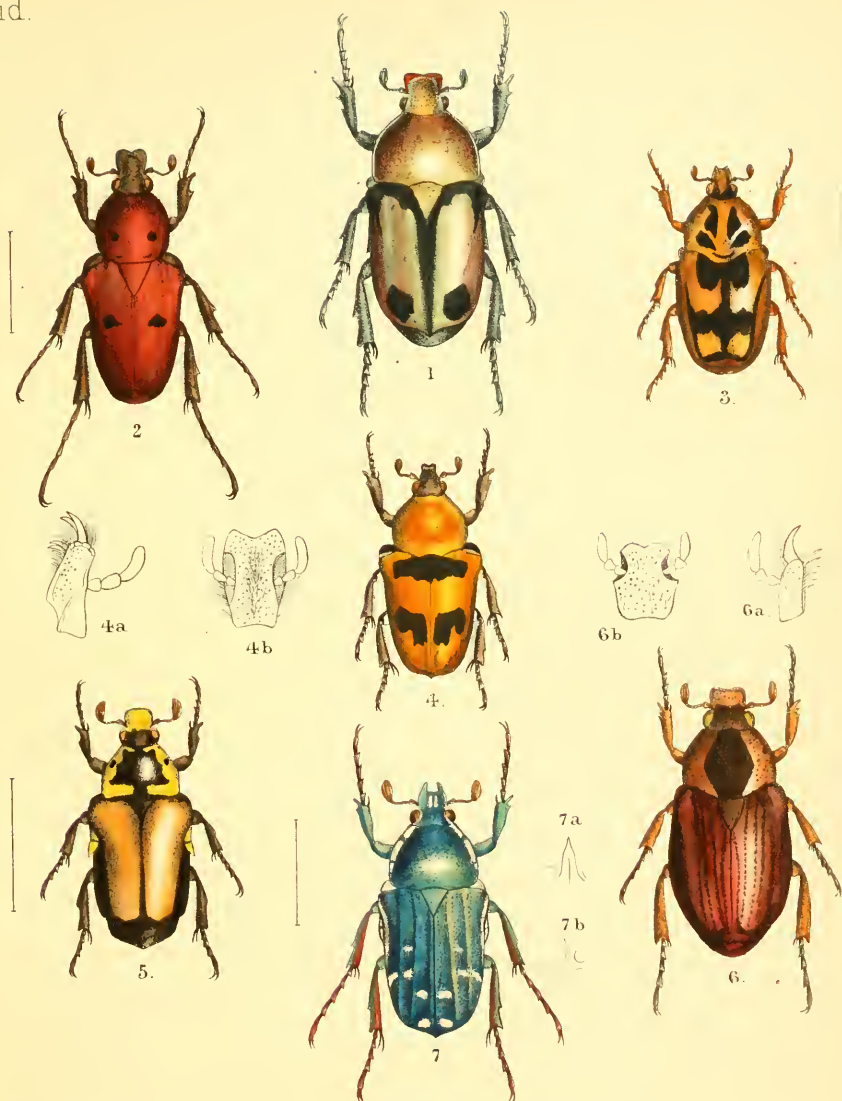


4



8

- 1 *Auxicerus platyceps*, *Waterh., Ann. & Mag. Nat. Hist.*, XII (1887) p. 36. Peru.
 2 *Glenida suffusa*, *Gahan, Ann. & Mag. Nat. Hist.*, II (1888) p. 60. China.
 3 *Glenida cyaneipennis*, *Gahan, Ann. & Mag. Nat. Hist.*, II (1888) p. 36. China.
 4 *Callipyndax cupreiventris*, *Waterh., Ann. & Mag. Nat. Hist.*, XIX (1887) p. 295. Brazil.
 5 *Armeniosoma atrum*, *Waterh., Ann. & Mag. Nat. Hist.*, XIX (1887) p. 293. Cape of Good Hope.
 6 *Maschalix latipennis*, *Waterh., Ann. & Mag. Nat. Hist.*, XIX (1887) p. 294. Queensland.
 7 *Cænophrada anobioides*, *Waterh., Ann. & Mag. Nat. Hist.*, I (1883) p. 250. India.
 8 *Sphenophorus Cumingii*, *Waterh., Ann. & Mag. Nat. Hist.*, XVIII (1886) p. 318. Philippine Is.



1. *Eudicella Trimeni*, *O. Janson, Gist. Ent., III (1884), p. 103.* Natal.
 2. *Stenotarsia punctiventris*, *Waterh. Ann. & Mag. Nat. Hist., XIV (1884), p. 348.* Madagascar.
 3. *Charadronota curvata*, *O. Janson, Notes Leyden Mus., X (1888), p. 110.* W. Africa.
 4. *Simorrhina Staudingeri*, *Kraatz, Deutsch. ent. Zeit., XXX (1886), p. 443.* Africa.
 5. *Macroma Oberthüri*, *O. Janson, Notes Leyden Mus., X (1888), p. 112.* Thibet.
 6. *Polyplastus assarius*, *O. Janson, Notes Leyden Mus., X (1888), p. 115.* W. Africa.
 7. *Gnathocera hyacinthina*, *O. Janson, Gist. Ent., III (1885), p. 143.* E. Africa.



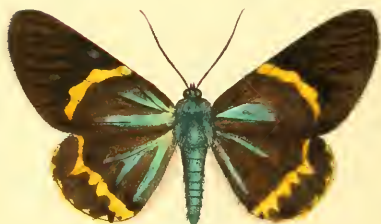
1



2



3



4

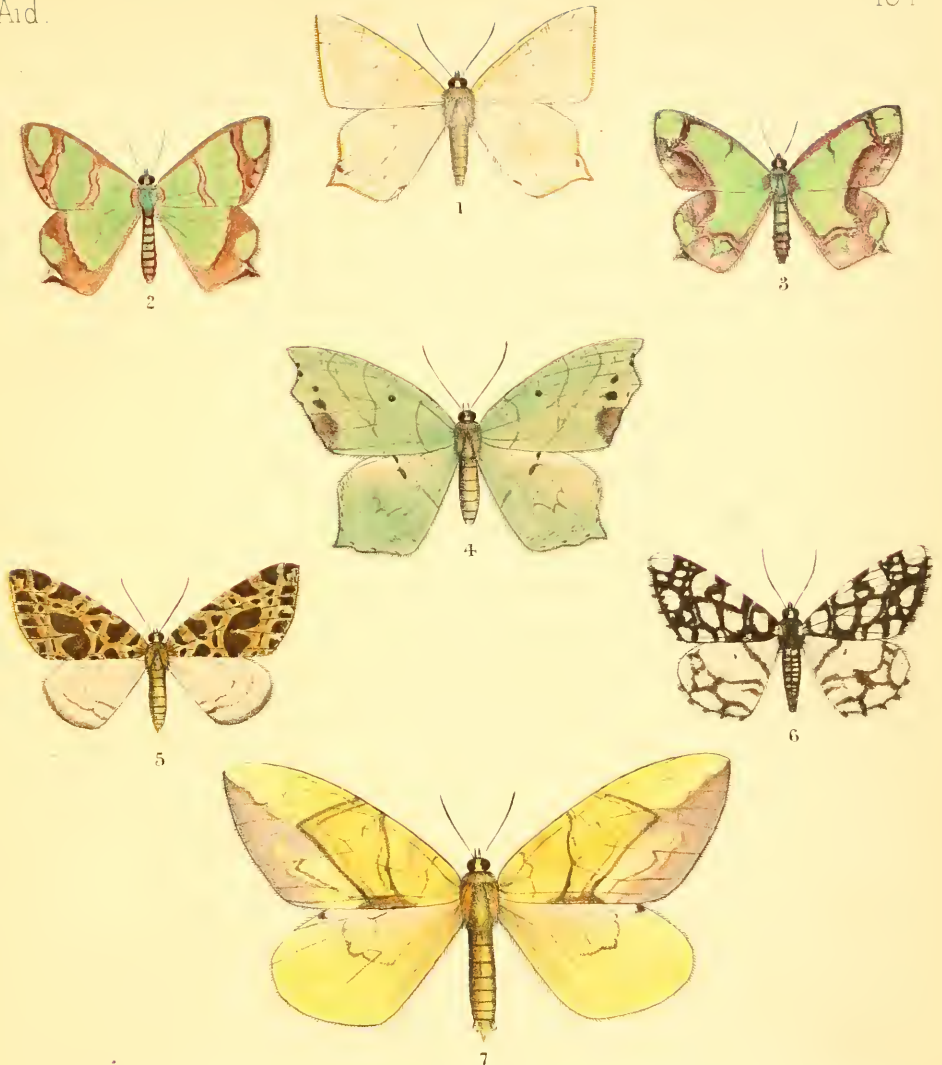


5



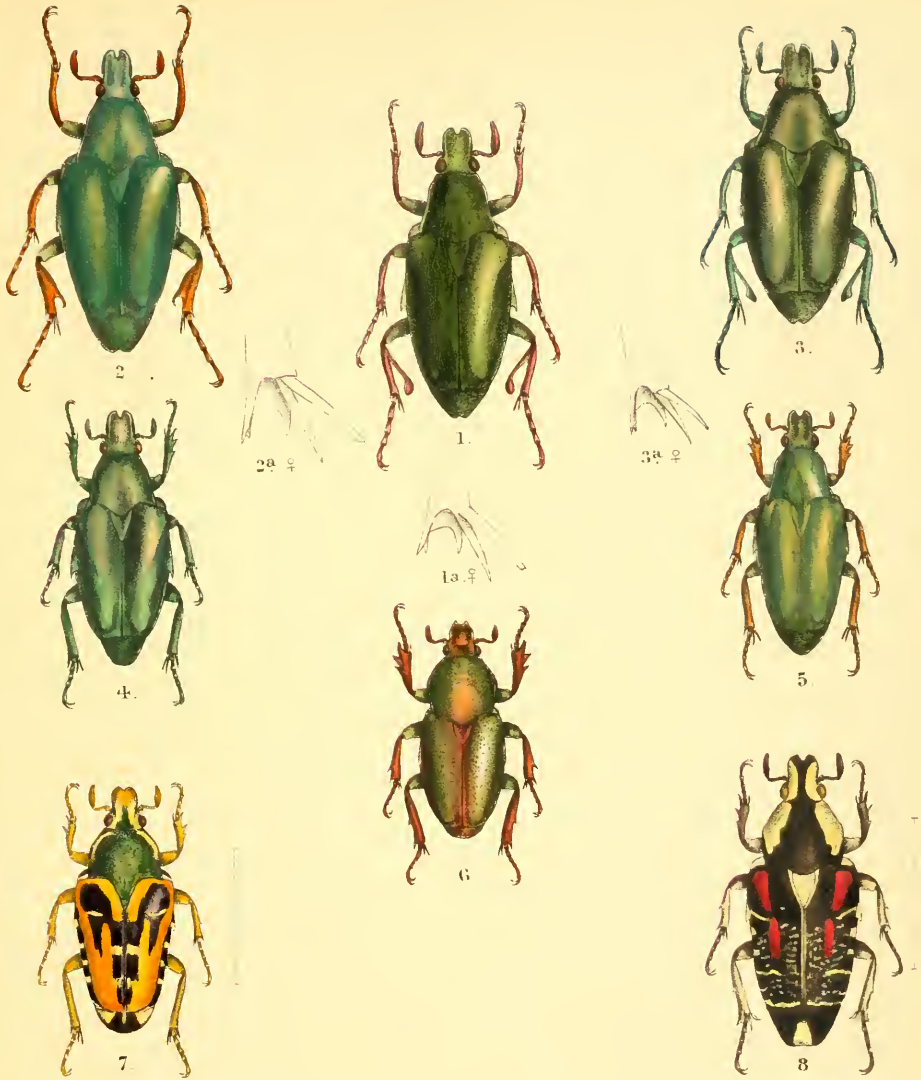
6

1. *Milionia Güntheri*, Butler, *Ann. & Mag. Nat. Hist.*, VIII (1881) p. 381. Sumatra.
 2. *Milionia pyrozonis*, Butler, *Ann. & Mag. Nat. Hist.*, X (1882) p. 375. Tenasserim.
 3. *Milionia latifasciata*, Butler, *Ann. & Mag. Nat. Hist.*, VIII (1881) p. 381. Malacca.
 4. *Milionia basalis*, Walker, *List. Lep. Het. Brit. Mus.*, II (1854) p. 365. Java.
 5. *Milionia Drucei*, Butler, *Ann. & Mag. Nat. Hist.*, XII (1883) p. 107. Celebes.
 6. *Milionia Snelleni*, Butler, *Ann. & Mag. Nat. Hist.*, XII (1883) p. 108. Celebes.

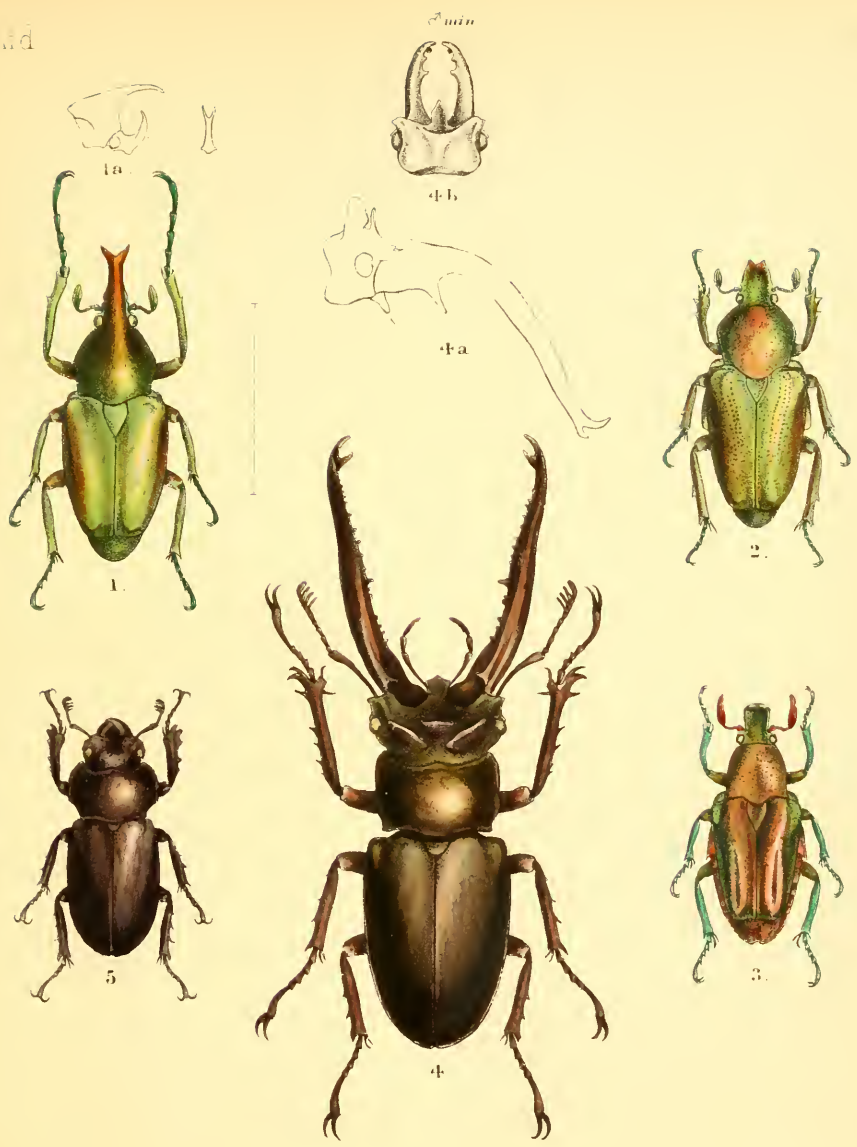


1. *Urapteryx margaritata*, Moore, Proc Zool Soc Lond., (1867), p. 612. Bengal.
 2. *Agathia quinaria*, Moore, Proc Zool Soc Lond., (1867), p. 639. Bengal.
 3. *Agathia arcuata*, Moore, Proc Zool Soc Lond., (1867), p. 640. Bengal.
 4. *Ennomos viridata*, Moore, Proc Zool Soc Lond., (1867), p. 623. Bengal.
 5. *Cidaria reticulata*, Moore, Proc Zool Soc Lond., (1867), p. 662. Bengal.
 6. *Arichanna maculata*, Moore, Proc Zool Soc Lond., (1867), p. 658. Bengal.
 7. *Gandaritis flavata*, Moore, Proc Zool Soc Lond., (1867), p. 660. Bengal.





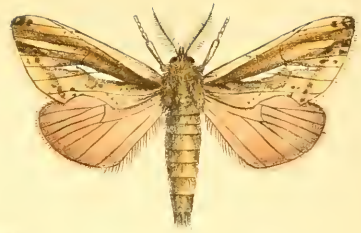
1. *Plectrone spathulifera*, Bates, *Proc. Zool. Soc. Lond.*, (1889), p. 388. Kimi Balu.
 2. *Plectrone auripes*, Westwood, Bates, *Proc. Zool. Soc. Lond.*, (1889), p. 387. Kimi Balu.
 3. *Plectrone viridipes*, Bates, *Proc. Zool. Soc. Lond.*, (1889), p. 388. Kimi Balu.
 4. *Chalcothea pomacea*, Bates, *Proc. Zool. Soc. Lond.*, (1889), p. 389. Kimi Balu.
 5. *Chalcothea planiuscula*, Bates, *Proc. Zool. Soc. Lond.*, (1889), p. 389. Kimi Balu.
 6. *Prigenia viridiaurata*, Bates, *Proc. Zool. Soc. Lond.*, (1889), p. 385. Kimi Balu.
 7. *Xenoloba speciosa*, Bates, *Proc. Zool. Soc. Lond.*, (1889), p. 387. Kimi Balu.
 8. *Tænioderæ ditissima*, Bates, *Proc. Zool. Soc. Lond.*, (1889), p. 390. Kimi Balu.



1, 2. *Mycteristes telifer*, Bates, *Proc. Zool. Soc. Lond.*, (1889), p. 386. Kiri Batu
 3. *Glyptothea Whiteheadi*, Bates, *Proc. Zool. Soc. Lond.*, (1889), p. 390. Kiri Batu
 4, 5. *Lucanus laminifer*, ♂, ♀, *Waterh. Ann. & Mag. Nat. Hist.*, V (1890), p. 33. Assam
 Maud Horner Fisher del. et lith. Muntern Bros imp.



1.



2.



3.



4.



5.



6.

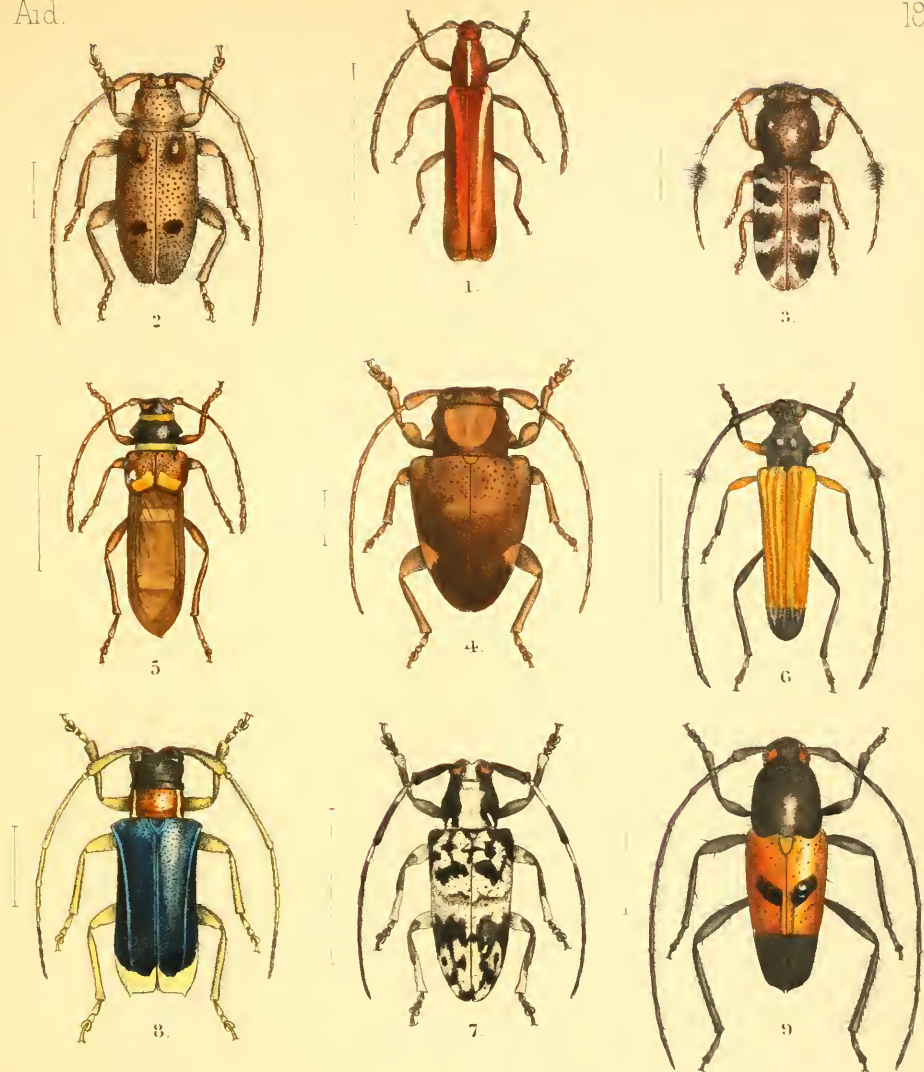


7.



8.

- 1 *Celeia sikkima*, ♂, Moore, *Descr. Lep. Coll. Atkinson*, p. 60 Darjeeling
 2 *Celeia auritracta*, ♂, Moore, *Proc. Zool. Soc. Lond.*, (1865), p. 811 Darjeeling
 3 *Cerura prasana*, ♂, Moore, *Proc. Zool. Soc. Lond.*, (1865), p. 812 Darjeeling
 4 *Cerura junctura*, ♂, Moore, *Descr. Lep. Coll. Atkinson*, p. 65 Darjeeling
 5 *Pheosia costalis*, ♂, Moore, *Descr. Lep. Coll. Atkinson*, p. 69 Darjeeling
 6 *Monema ocellata*, ♀, Moore, *Descr. Lep. Coll. Atkinson*, p. 74 Darjeeling
 7 *Cossus cadambæ*, ♂, Moore, *Proc. Zool. Soc. Lond.*, (1865) p. 822 Bengal
 8 *Cossus tessellatus*, ♂, Moore, *Descr. Lep. Coll. Atkinson*, p. 85 Calcutta.



- 1 *Archresthes Bowringii*, Pascoe, Journ. of Ent., II, p. 51. Hong Kong
 2 *Isse punctata*, Pascoe, Journ. of Ent., II, p. 212. Natal.
 3 *Biasmia guttata*, Pascoe, Journ. of Ent., II, p. 271. Natal.
 4 *Arenia trigona*, Pascoe, Trans. Ent. Soc. Lond., IV, (1858), p. 247. Brazil.
 5 *Hestheris acutipennis*, Pascoe, Trans. Ent. Soc. Lond., I (1863), p. 556. New South Wales.
 6 *Tritocosmia Digglei*, Pascoe, Trans. Ent. Soc. Lond., V, (1859), p. 53. Queensland.
 7 *Anastetha raripila*, Pascoe, Proc. Ent. Soc. Lond., (1866), p. 28. Rockhampton.
 8 *Chrysaperda collaris*, Pascoe, Trans. Ent. Soc. Lond., 1883, p. 509. Ecuador.
 9 *Pianodes luctuosus*, Pascoe, Trans. Ent. Soc. Lond., VI, (1860), p. 102. Ceram.



1. *Planema Jacksoni*, E. Sharpe, *Ann. & Mag. Nat. Hist.*, V. (1890), p. 335. E. Africa
 2. *Teracolus bifasciatus*, E. Sharpe, *Ann. & Mag. Nat. Hist.*, V. (1890), p. 336. E. Africa
 3. *Teracolus Jacksoni*, E. Sharpe, *Ann. & Mag. Nat. Hist.*, V. (1890), p. 336. E. Africa
 4. *Pinacopteryx nigropunctata*, E. Sharpe, *Ann. & Mag. Nat. Hist.*, V. (1890), p. 336. E. Africa
 5, 6. *Teracolus eliza*, ♂, ♀, E. Sharpe, *Ann. & Mag. Nat. Hist.*, V. (1890), p. 447. E. Africa

QL Waterhouse, Charles Owen.
463 Aid to the identification
W3 of insects.
v.2
Ent.

SMITHSONIAN INSTITUTION LIBRARIES



3 9088 00449996 8

nhent QL463.W3

v. 2 Aid to the identification of inse

